

Nur für Forschungszwecke

# FOLR1 Polyklonaler Antikörper

Katalog-Nr.:29472-1-AP



## Allgemeine Informationen

<b>Katalog-Nr.:</b> 29472-1-AP	<b>GenBank-Zugangsnummer:</b> BC002947	<b>Reinigungsmethode:</b> Antigen-Affinitätsreinigung
<b>Größe:</b> 150ul , Konzentration: 1000 µg/ml von2348 Nanodrop;	<b>GeneID (NCBI):</b> 2348	<b>Empfohlene Verdünnungen:</b> WB 1:2000-1:10000
<b>Wirt:</b> Kaninchen	<b>Vollständiger Name:</b> folate receptor 1 (adult)	
<b>Isotyp:</b> IgG	<b>Berechnete Masse:</b> 257 aa, 30 kDa	
	<b>Beobachtete Masse:</b> 36-38 kDa	

## Anwendungen

<b>Geprüfte Anwendungen:</b> WB, ELISA	<b>Positivkontrollen:</b> WB : HeLa-Zellen, Mausnierengewebe, Rattennierengewebe
<b>Getestete Reaktivität:</b> Human, Maus, Ratte	

## Hintergrundinformationen

Folate receptor 1 (FOLR1), also known as folate receptor alpha or adult folate-binding protein (FBP), is a 38-kDa glycoprotein belonging to the folate receptor family (PMID:15094207; 23528302). The receptor binds to folate and reduced folic acid derivatives and mediates delivery of 5-methyltetrahydrofolate to the interior of cells. FOLR1 is a secreted protein that either anchors to membranes via a glycosyl-phosphatidylinositol linkage or exists in a soluble form. FOLR1 expression is often limited to the apical surfaces of epithelium in the lung, kidney and choroid plexus but is differentially overexpressed in a variety of solid tumors such as ovarian cancer, non-small cell lung cancer, breast cancer, kidney cancer and high-grade osteosarcoma (PMID: 23528302; 23357463).

## Lagerung

**Lagerungsbedingungen:**  
Bei -20°C lagern.  
**Lagerungspuffer:**  
PBS mit 0.02% Natriumazid und 50% Glycerin pH 7.3.  
**Aliquotieren ist nicht notwendig bei -20°C Lagerung**

**\*\*\* 20ul-Größen enthalten 0.1% BSA**

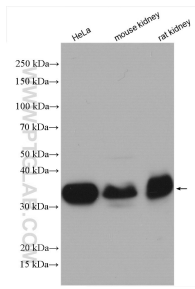
For technical support and original validation data for this product please contact:

T: 1 (888) 4PTGLAB (1-888-478-4522) (toll free in USA), or 1(312) 455-8498 (outside USA)

E: proteintech@ptglab.com  
W: ptglab.com

**This product is exclusively available under Proteintech Group brand and is not available to purchase from any other manufacturer.**

## Ausgewählte Validierungsdaten



HeLa cells were subjected to SDS PAGE followed by western blot with 29472-1-AP (FOLR1 antibody) at dilution of 1:5000 incubated at room temperature for 1.5 hours.