

Nur für Forschungszwecke

CRMP1 Polyklonaler Antikörper

Katalog-Nr.:29497-1-AP



Allgemeine Informationen

Katalog-Nr.: 29497-1-AP	GenBank-Zugangsnummer: NM_001014809	Reinigungsmethode: Antigen-Affinitätsreinigung
Größe: 150ul, Konzentration: 700 µg/ml von Nanodrop;	GeneID (NCBI): 1400	Empfohlene Verdünnungen: WB 1:2000-1:16000 IHC 1:500-1:2000
Wirt: Kaninchen	Vollständiger Name: collapsin response mediator protein 1	
Isotyp: IgG	Berechnete Masse: 62KD	
Immunogen Katalognummer: AG31559	Beobachtete Masse: 62 kDa	

Anwendungen

Geprüfte Anwendungen: IHC, WB, ELISA	Positivkontrollen: WB : Mauslungengewebe, Rattenlungengewebe IHC : Maushirngewebe,
Getestete Reaktivität: Maus, Ratte	
Hinweis-IHC: Antigendemaskierung mit TE-Puffer pH 9,0 empfohlen. (*) Wahlweise kann die Antigendemaskierung auch mit Citratpuffer pH 6,0 erfolgen.	

Hintergrundinformationen

CRMP1 (Collapsin response mediator protein 1) is also named as DPYSL1, ULIP3, DRP-1 and belongs to the collapsin response mediator protein family, which are a family of five cytoplasmic proteins predominantly expressed in the developing nervous system. CRMP1, the predicted 62-kDa protein and its 75-kDa isoform corresponding to its N-terminal splice variant already described for embryonic, neonatal, and adult brain of the rat are evidenced in the cortex of adult mouse (PMID:15834957). This protein is involved in invasion, and aggressiveness of prolactin pituitary tumors.

Lagerung

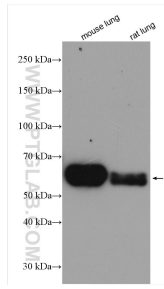
Lagerungsbedingungen:
Bei -20°C lagern.
Lagerungspuffer:
PBS mit 0.02% Natriumazid und 50% Glycerin pH 7.3.
Aliquotieren ist nicht notwendig bei -20°C Lagerung

*** 20ul-Größen enthalten 0.1% BSA

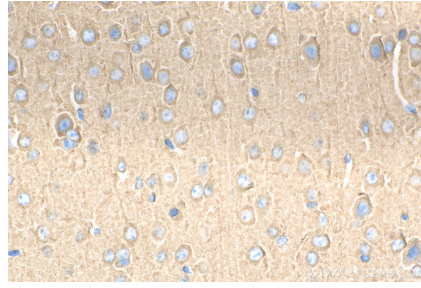
For technical support and original validation data for this product please contact:
T: 1 (888) 4PTGLAB (1-888-478-4522) (toll free in USA), or 1(312) 455-8498 (outside USA)
E: proteintech@ptglab.com
W: ptglab.com

This product is exclusively available under Proteintech Group brand and is not available to purchase from any other manufacturer.

Ausgewählte Validierungsdaten



mouse lung tissue were subjected to SDS PAGE followed by western blot with 29497-1-AP (CRMP1 antibody) at dilution of 1:8000 incubated at room temperature for 1.5 hours.



Immunohistochemical analysis of paraffin-embedded mouse brain tissue slide using 29497-1-AP (CRMP1 antibody) at dilution of 1:1000 (under 40x lens). Heat mediated antigen retrieval with Tris-EDTA buffer (pH 9.0).