

Nur für Forschungszwecke

# GLS Polyklonaler Antikörper

Katalog-Nr.: 29519-1-AP

2 Publikationen



## Allgemeine Informationen

|  |   |  |
|--|---|--|
| <b>Katalog-Nr.:</b><br>29519-1-AP                              | <b>GenBank-Zugangsnummer:</b><br>NM_014905  | <b>Reinigungsmethode:</b><br>Antigen-Affinitätsreinigung |
| <b>Größe:</b><br>150ul, Konzentration: 650 µg/ml von Nanodrop; | <b>GeneID (NCBI):</b><br>2744               | <b>Empfohlene Verdünnungen:</b><br>WB 1:1000-1:6000      |
| <b>Wirt:</b><br>Kaninchen                                      | <b>Vollständiger Name:</b><br>glutaminase   |  |
| <b>Isotyp:</b><br>IgG  | <b>Berechnete Masse:</b><br>73 kDa          |  |
| <b>Immunogen Katalognummer:</b><br>AG31167                     | <b>Beobachtete Masse:</b><br>58 kDa, 65 kDa |  |

## Anwendungen

|   |   |
|---|---|
| <b>Geprüfte Anwendungen:</b><br>WB, ELISA           | <b>Positivkontrollen:</b><br>WB: COLO 320-Zellen, HeLa-Zellen, MCF-7-Zellen, SH-SY5Y-Zellen |
| <b>In Publikationen genannte Anwendungen:</b><br>WB |   |
| <b>Getestete Reaktivität:</b><br>Human              |   |
| <b>Zitierte Arten:</b><br>Human                     |   |

## Hintergrundinformationen

GLS, also named as GLS1 and KIAA0838, belongs to the glutaminase family. It catalyzes the first reaction in the primary pathway for the renal catabolism of glutamine. Glutaminase-, glutamate-, and taurine-immunoreactive neurons develop neurofibrillary tangles in Alzheimer's disease(PMID:1672808).The glutaminase band in AA/C1 cells is more intense than in HT29 cells, in accordance with measurements of glutaminase activity, and had the same molecular mass of approx. 63 kDa. The bands for both cell lines are clearly different in size from both rat liver glutaminase (58 kDa) and rat kidney glutaminase (65 kDa)(PMID:12408749). It also reveals a molecular weight of 83-84 kDa as a phosphate-dependent glutaminase(PMID:447624;7512428). It has 3 isoforms named as KGA, GAM, GAC. This antibody can recognize KGA and GAC.

## Bemerkenswerte Veröffentlichungen

| Verfasser         | Pubmed ID | Journal         | Anwendung |
|-------------------|-----------|-----------------|-----------|
| Emily-Rose Martin | 36339621  | Front Pharmacol | WB        |
| Xingyu Zhu        | 37007126  | Front Oncol     | WB        |

## Lagerung

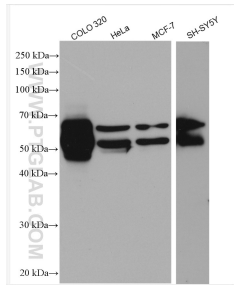
**Lagerungsbedingungen:**  
Bei -20°C lagern.  
**Lagerungspuffer:**  
PBS mit 0.02% Natriumazid und 50% Glycerin pH 7.3.  
Aliquotieren ist nicht notwendig bei -20°C Lagerung

\*\*\* 20ul-Größen enthalten 0.1% BSA

For technical support and original validation data for this product please contact:  
T: 1 (888) 4PTGLAB (1-888-478-4522) (toll free in USA), or 1(312) 455-8498 (outside USA)  
E: proteintech@ptglab.com  
W: ptglab.com

This product is exclusively available under Proteintech Group brand and is not available to purchase from any other manufacturer.

## Ausgewählte Validierungsdaten



COLO 320 cells were subjected to SDS PAGE followed by western blot with 29519-1-AP (GLS antibody) at dilution of 1:3000 incubated at room temperature for 1.5 hours.