

Nur für Forschungszwecke

Phospho-MCL1 (Thr163) Polyklonaler Antikörper



Katalog-Nr.: 29560-1-AP

Allgemeine Informationen

Katalog-Nr.: 29560-1-AP	GenBank-Zugangsnummer: BC017197	Reinigungsmethode: Antigen-Affinitätsreinigung
Größe: 100ul , Konzentration: 150 µg/ml von Nanodrop;	GeneID (NCBI): 4170	Empfohlene Verdünnungen: WB 1:500-1:2000
Wirt: Kaninchen	Vollständiger Name: myeloid cell leukemia sequence 1 (BCL2-related)	
Isotyp: IgG	Berechnete Masse: 350 aa, 37 kDa	
	Beobachtete Masse: 40 kDa	

Anwendungen

Geprüfte Anwendungen: WB, ELISA	Positivkontrollen: WB : MG132 treated HeLa cells,
Getestete Reaktivität: Human	

Hintergrundinformationen

MCL1 is an anti-apoptotic member of the BCL-2 family originally isolated from the ML-1 human myeloid leukemia cell line. Similar to BCL2 and BCL2L1, MCL1 can interact with BAX and/or BAK1 to inhibit mitochondria-mediated apoptosis. Recent studies show that MCL1 is upregulated in numerous hematological and solid tumor malignancies. Therefore, MCL1 has been suggested as a potential new therapeutic target. MCL1 can be phosphorylated by several protein kinases which enables the recognition of MCL1 by its E3 ubiquitin-ligases TrCP or FBW7 (PMID: 33308268). MCL1 shows higher stability when phosphorylated on threonine 163 (PMID: 16543145).

Lagerung

Lagerungsbedingungen:
Bei -20°C lagern. Nach dem Versand ein Jahr lang stabil
Lagerungspuffer:
PBS mit 0.02% Natriumazid und 50% Glycerin pH 7.3.
Aliquotieren ist nicht notwendig bei -20°C Lagerung

*** 20ul-Größen enthalten 0.1% BSA

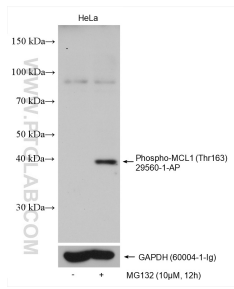
For technical support and original validation data for this product please contact:

T: 1 (888) 4PTGLAB (1-888-478-4522) (toll free
in USA), or 1(312) 455-8498 (outside USA)

E: proteintech@ptglab.com
W: ptglab.com

This product is exclusively available under Proteintech Group brand and is not available to purchase from any other manufacturer.

Ausgewählte Validierungsdaten



Non-treated and MG132 treated HeLa cells were subjected to SDS PAGE followed by western blot with 29560-1-AP (Phospho-MCL1 (Thr163) antibody) at dilution of 1:1000 incubated at room temperature for 1.5 hours. The membrane was stripped and re-blotted with GAPDH antibody as the loading control.