

Nur für Forschungszwecke

Phospho-PDH E1 Alpha (Ser232) Polyklonaler Antikörper



Katalog-Nr.: 29582-1-AP

1 Publikationen

Allgemeine Informationen

Katalog-Nr.: 29582-1-AP	GenBank-Zugangsnummer: BC002406	Reinigungsmethode: Antigen-Affinitätsreinigung
Größe: 100ul, Konzentration: 240 µg/ml von Nanodrop;	GeneID (NCBI): 5160	Empfohlene Verdünnungen: WB 1:1000-1:8000
Wirt: Kaninchen	Vollständiger Name: pyruvate dehydrogenase (lipoamide) alpha 1	
Isotyp: IgG	Berechnete Masse: 43 kDa	
	Beobachtete Masse: 40 kDa	

Anwendungen

Geprüfte Anwendungen: WB, ELISA	Positivkontrollen: WB: HeLa-Zellen, Serum-free treated HeLa cells, 10 % fetal bovine serum treated HeLa cells
In Publikationen genannte Anwendungen: WB	
Getestete Reaktivität: Human	
Zitierte Arten: Maus	

Hintergrundinformationen

PDH E1 Alpha (PDHA1), as the major component of PDH, can be phosphorylated and inactivated by PDHK1. PDHA1 contains three serine residues (Ser232, Ser293, or Ser300) that can be reversibly phosphorylated by a dedicated family of four inhibitory pyruvate dehydrogenase kinases (PDHK1-4) and two reactivating phosphatases (PDP1, 2). Hypoxia induces the expression of PDHK1 and PDHK3 and hyperphosphorylates PDHA1. Phosphorylated PDHA1 inactivates the whole pyruvate dehydrogenase complex (PDC), reduces pyruvate entering into the tricarboxylic acid (TCA) cycle for oxidative phosphorylation, enhances the Warburg effect and promotes tumorigenesis. (PMID: 30993888, PMID: 34749809)

Bemerkenswerte Veröffentlichungen

Verfasser	Pubmed ID	Journal	Anwendung
Menglong Wang	35647084	Front Cardiovasc Med	WB

Lagerung

Lagerungsbedingungen:
Bei -20°C lagern. Nach dem Versand ein Jahr lang stabil
Lagerungspuffer:
PBS mit 0.02% Natriumazid und 50% Glycerin pH 7.3.
Aliquotieren ist nicht notwendig bei -20°C Lagerung

*** 20ul-Größen enthalten 0.1% BSA

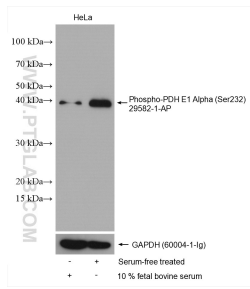
For technical support and original validation data for this product please contact:

T: 1 (888) 4PTGLAB (1-888-478-4522) (toll free
in USA), or 1(312) 455-8498 (outside USA)

E: proteintech@ptglab.com
W: ptglab.com

This product is exclusively available under Proteintech Group brand and is not available to purchase from any other manufacturer.

Ausgewählte Validierungsdaten



10 % fetal bovine serum treated HeLa cells and Serum-free treated HeLa cells were subjected to SDS PAGE followed by western blot with 29582-1-AP (Phospho-PDH E1 Alpha (Ser232) antibody) at dilution of 1:4000 incubated at room temperature for 1 hours. The membrane was stripped and re-blotted with GAPDH antibody as loading control.