

Nur für Forschungszwecke

SYNPO Polyklonaler Antikörper

Katalog-Nr.:29662-1-AP



Allgemeine Informationen

Katalog-Nr.: 29662-1-AP	GenBank-Zugangsnummer: BC146665	Reinigungsmethode: Antigen-Affinitätsreinigung
Größe: 150ul, Konzentration: 230 µg/ml von Nanodrop;	GeneID (NCBI): 11346	Empfohlene Verdünnungen: WB 1:1000-1:6000 IF 1:200-1:800
Wirt: Kaninchen	Vollständiger Name: synaptopodin	
Isotyp: IgG	Berechnete Masse: 929 aa, 99 kDa	
Immunogen Katalognummer: AG31287	Beobachtete Masse: 44, 74-100 kDa	

Anwendungen

Geprüfte Anwendungen: IF, WB, ELISA	Positivkontrollen: WB : Maushirngewebe, IF : U2OS-Zellen,
Getestete Reaktivität: Human, Maus, Ratte	

Hintergrundinformationen

Synaptopodin is a actin-associated protein expressed in mature dendritic spines and renal podocytes. Several isoforms of synaptopodin have been reported: the 100 kDa neural form and 110 kDa renal form. 44-45 kDa may represent the degradation product of synaptopodin. As a podocyte specific protein, synaptopodin expression level was decreased in kidney but increased in the urinary podocytes from patients with preeclampsia, indicating that synaptopodin is a useful marker for preeclampsia. (15841212, 10555072)

Lagerung

Lagerungsbedingungen:
Bei -20°C lagern. Nach dem Versand ein Jahr lang stabil
Lagerungspuffer:
PBS mit 0.02% Natriumazid und 50% Glycerin pH 7.3.
Aliquotieren ist nicht notwendig bei -20°C Lagerung

*** 20ul-Größen enthalten 0.1% BSA

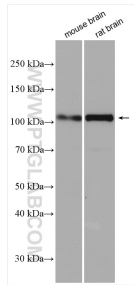
For technical support and original validation data for this product please contact:

T: 1 (888) 4PTGLAB (1-888-478-4522) (toll free in USA), or 1(312) 455-8498 (outside USA)

E: proteintech@ptglab.com
W: ptglab.com

This product is exclusively available under Proteintech Group brand and is not available to purchase from any other manufacturer.

Ausgewählte Validierungsdaten



Various lysates were subjected to SDS PAGE followed by western blot with 29662-1-AP (SYNPO antibody) at dilution of 1:3000 incubated at room temperature for 1.5 hours.



Immunofluorescent analysis of (-20°C Methanol) fixed U2OS cells using SYNPO antibody (29662-1-AP) at dilution of 1:400 and CoraLite® 488-Conjugated AffiniPure Goat Anti-Rabbit IgG(H+L).



Immunofluorescent analysis of (-20°C Methanol) fixed U2OS cells using SYNPO antibody (29662-1-AP) at dilution of 1:400 and CoraLite® 488-Conjugated AffiniPure Goat Anti-Rabbit IgG(H+L).