

Nur für Forschungszwecke

Cannabinoid receptor 1 Polyklonaler Antikörper



Katalog-Nr.: 29708-1-AP

Allgemeine Informationen

Katalog-Nr.: 29708-1-AP	GenBank-Zugangsnummer: BC074812	Reinigungsmethode: Antigen-Affinitätsreinigung
Größe: 150ul, Konzentration: 450 µg/ml von Nanodrop;	GeneID (NCBI): 1268	Empfohlene Verdünnungen: WB 1:5000-1:50000
Wirt: Kaninchen	Vollständiger Name: cannabinoid receptor 1 (brain)	
Isotyp: IgG	Berechnete Masse: 472 aa, 53 kDa	
Immunogen Katalognummer: AG31838	Beobachtete Masse: 48 kDa, 66 kDa	

Anwendungen

Geprüfte Anwendungen:
WB, ELISA

Getestete Reaktivität:
Human, Maus, Ratte

Positivkontrollen:

WB: Maushirngewebe, Rattenhirngewebe, SH-SY5Y-Zellen

Hintergrundinformationen

Cannabinoid receptor 1 (CNR1, or CB1) and CNR2 (CB2) are members of the guanine-nucleotide-binding protein (G-protein) coupled receptor family. The CB1 receptor is expressed mainly in the brain. The CB2 receptor is expressed mainly in the immune system and in hematopoietic cells. The two receptors have been found to be involved in the cannabinoid-induced CNS effects (including alterations in mood and cognition) experienced by users of marijuana.

Lagerung

Lagerungsbedingungen:
Bei -20°C lagern. Nach dem Versand ein Jahr lang stabil

Lagerungspuffer:
PBS mit 0.02% Natriumazid und 50% Glycerin pH 7.3.

Aliquotieren ist nicht notwendig bei -20°C Lagerung

*** 20ul-Größen enthalten 0.1% BSA

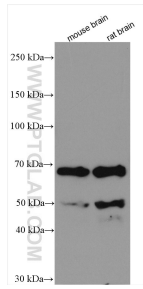
For technical support and original validation data for this product please contact:

T: 1 (888) 4PTGLAB (1-888-478-4522) (toll free in USA), or 1(312) 455-8498 (outside USA)

E: proteintech@ptglab.com
W: ptglab.com

This product is exclusively available under Proteintech Group brand and is not available to purchase from any other manufacturer.

Ausgewählte Validierungsdaten



Various lysates were subjected to SDS PAGE followed by western blot with 29708-1-AP (Cannabinoid receptor 1 antibody) at dilution of 1:10000 incubated at room temperature for 1.5 hours.