

Nur für Forschungszwecke

ENT1 Polyklonaler Antikörper

Katalog-Nr.:29862-1-AP

Vorgestelltes Produkt



Allgemeine Informationen

Katalog-Nr.: 29862-1-AP	GenBank-Zugangsnummer: NM_001372327.1	Reinigungsmethode: Antigen-Affinitätsreinigung
Größe: 150ul , Konzentration: 500 µg/ml von Nanodrop;	GeneID (NCBI): 2030	Empfohlene Verdünnungen: WB 1:500-1:2000 IHC 1:50-1:500
Wirt: Kaninchen	Vollständiger Name: solute carrier family 29 (nucleoside transporters), member 1	
Isotyp: IgG	Berechnete Masse: 50kD	
Immunogen Katalognummer: AG32003	Beobachtete Masse: 70 kDa	

Anwendungen

Geprüfte Anwendungen:

IHC, WB, ELISA

Getestete Reaktivität:

Human, Maus

Hinweis-IHC: Antigendemaskierung mit TE-Puffer pH 9,0 empfohlen. (*) Wahlweise kann die Antigendemaskierung auch mit Citratpuffer pH 6,0 erfolgen.

Positivkontrollen:

WB: HCT 116-Zellen, HeLa-Zellen, Mäusherzgewebe, Mauslebergewebe, Mäusnierengewebe, Rattenlebergewebe

IHC: humanes Kolonkarzinomgewebe, humanes Lymphomgewebe

Hintergrundinformationen

ENT1 (equilibrative nucleoside transporter 1; also known as SLC29A1) is a ubiquitous protein located at the cell membrane and is a major transporter responsible for the cellular uptake and release of endogenous nucleosides such as adenosine, and nucleoside analogs used in chemotherapy. The predicted molecular weight of ENT1 is 50 kDa, while heavier 54-68 kDa band may be observed due to the glycosylation (16448802, 11850433, 16111480). A smaller novel splice variant of the mouse ENT1 has also been identified, which generates a protein of 35-40 kDa (18413666).

Lagerung

Lagerungsbedingungen:

Bei -20°C lagern. Nach dem Versand ein Jahr lang stabil

Lagerungspuffer:

PBS mit 0.02% Natriumazid und 50% Glycerin pH 7.3.

Aliquotieren ist nicht notwendig bei -20°C Lagerung

*** 20ul-Größen enthalten 0.1% BSA

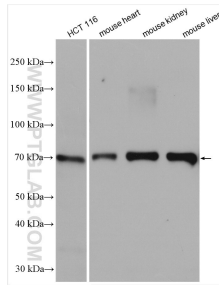
For technical support and original validation data for this product please contact:

T: 1 (888) 4PTGLAB (1-888-478-4522) (toll free in USA), or 1(312) 455-8498 (outside USA)

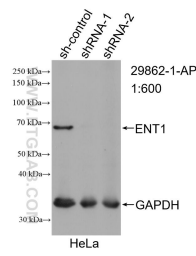
E: proteintech@ptglab.com
W: ptglab.com

This product is exclusively available under Proteintech Group brand and is not available to purchase from any other manufacturer.

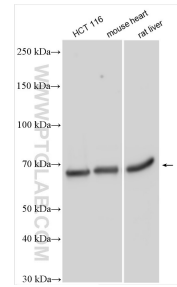
Ausgewählte Validierungsdaten



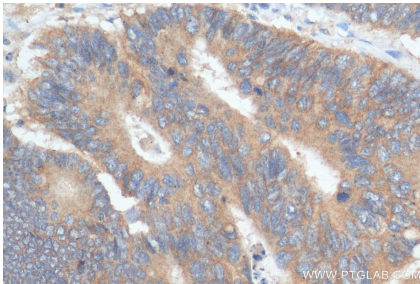
Various lysates were subjected to SDS PAGE followed by western blot with 29862-1-AP (ENT1 antibody) at dilution of 1:800 incubated at room temperature for 1.5 hours.



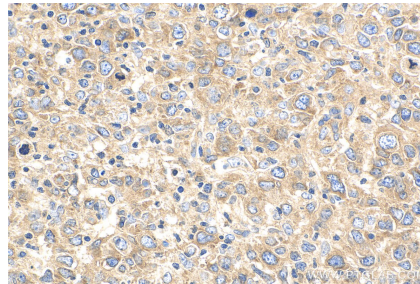
WB result of ENT1 antibody (29862-1-AP; 1:600; incubated at room temperature for 1.5 hours) with sh-Control and sh-ENT1 transfected HeLa cells.



Various lysates were subjected to SDS PAGE followed by western blot with 29862-1-AP (ENT1 antibody) at dilution of 1:1000 incubated at room temperature for 1.5 hours.



Immunohistochemical analysis of paraffin-embedded human colon cancer tissue slide using 29862-1-AP (ENT1 antibody) at dilution of 1:200 (under 40x lens). Heat mediated antigen retrieval with Tris-EDTA buffer (pH 9.0).



Immunohistochemical analysis of paraffin-embedded human lymphoma tissue slide using 29862-1-AP (ENT1 antibody) at dilution of 1:200 (under 40x lens). Heat mediated antigen retrieval with Tris-EDTA buffer (pH 9.0).