

Nur für Forschungszwecke

# Phospho-PPP1CA (Thr320) Polyklonaler Antikörper



Katalog-Nr.: 29874-1-AP

## Allgemeine Informationen

<b>Katalog-Nr.:</b> 29874-1-AP	<b>GenBank-Zugangsnummer:</b> BC001888	<b>Reinigungsmethode:</b> Antigen-Affinitätsreinigung
<b>Größe:</b> 100ul, Konzentration: 250 µg/ml von Nanodrop;	<b>GeneID (NCBI):</b> 5499	<b>Empfohlene Verdünnungen:</b> WB 1:1000-1:6000
<b>Wirt:</b> Kaninchen	<b>Vollständiger Name:</b> protein phosphatase 1, catalytic subunit, alpha isoform	
<b>Isotyp:</b> IgG	<b>Berechnete Masse:</b> 330 aa, 38 kDa	
	<b>Beobachtete Masse:</b> 37 kDa	

## Anwendungen

<b>Geprüfte Anwendungen:</b> WB, ELISA	<b>Positivkontrollen:</b> WB: Mit Calyculin A behandelte HeLa-Zellen, mit Calyculin A behandelte Jurkat-Zellen
<b>Getestete Reaktivität:</b> Human	

## Hintergrundinformationen

Protein phosphatase associates with over 200 regulatory proteins to form highly specific holoenzymes which dephosphorylate hundreds of biological targets. Type 1 protein phosphatase (PP1), a serine/threonine phosphatase, is essential for cell division and participates in the regulation of glycogen metabolism, muscle contractility, and protein synthesis. Four isoforms of PP1 have been characterized: PP1 $\alpha$ , PP1 $\delta$ , PP1 $\gamma$  1 and PP1 $\gamma$  2 (PMID: 9835651). It has been illustrated that PP1 dephosphorylates Rb and cdc25 during mitosis (PMID: 8384581, PMID: 1392080). A cell cycle-dependent phosphorylation at Thr320 of PP1 $\alpha$  by cdc2 kinase inhibits PP1 $\alpha$  activity (PMID: 9122166).

## Lagerung

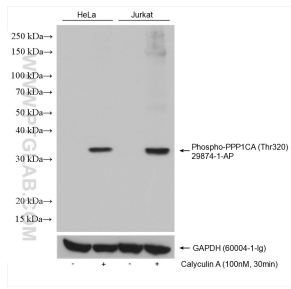
**Lagerungsbedingungen:**  
Bei -20°C lagern. Nach dem Versand ein Jahr lang stabil  
**Lagerungspuffer:**  
PBS mit 0.02% Natriumazid und 50% Glycerin pH 7.3.  
Aliquotieren ist nicht notwendig bei -20°C Lagerung

\*\*\* 20ul-Größen enthalten 0.1% BSA

For technical support and original validation data for this product please contact:  
T: 1 (888) 4PTGLAB (1-888-478-4522) (toll free in USA), or 1(312) 455-8498 (outside USA)  
E: proteintech@ptglab.com  
W: ptglab.com

This product is exclusively available under Proteintech Group brand and is not available to purchase from any other manufacturer.

## Ausgewählte Validierungsdaten



Non-treated and Calyculin A treated various cells were subjected to SDS PAGE followed by western blot with 29874-1-AP (Phospho-PPP1CA (Thr320) antibody) at dilution of 1:3000 incubated at room temperature for 1.5 hours. The membrane was stripped and re-blotted with GAPDH antibody as the loading control.