

Nur für Forschungszwecke

PFKFB4 Polyklonaler Antikörper

Katalog-Nr.:29902-1-AP



Allgemeine Informationen

Katalog-Nr.: 29902-1-AP	GenBank-Zugangsnummer: NM_001317134	Reinigungsmethode: Antigen-Affinitätsreinigung
Größe: 150ul , Konzentration: 1000 µg/ml von5210 Nanodrop;	GeneID (NCBI): 6-phosphofructo-2-kinase/fructose- 2,6-bisphosphatase 4	Empfohlene Verdünnungen: WB 1:1000-1:4000 IHC 1:50-1:500 IF 1:200-1:800
Wirt: Kaninchen	Vollständiger Name: 6-phosphofructo-2-kinase/fructose- 2,6-bisphosphatase 4	
Isotyp: IgG	Berechnete Masse: 54 kDa	
Immunogen Katalognummer: AG30571	Beobachtete Masse: 54 kDa	

Anwendungen

Geprüfte Anwendungen:
IF, IHC, WB, ELISA

Getestete Reaktivität:
Human, Maus

Hinweis-IHC: Antigenmaskierung mit TE-Puffer pH 9,0 empfohlen. (*) Wahlweise kann die Antigenmaskierung auch mit Citratpuffer pH 6,0 erfolgen.

Positivkontrollen:

WB : MDA-MB-231-Zellen, PC-3-Zellen, Raji-Zellen

IHC : humanes Nierengewebe, Maushodengewebe

IF : HUVEC-Zellen,

Hintergrundinformationen

PFKFB4 (6-phosphofructo-2-kinase/fructose-2,6-bisphosphatase 4), is a bi-function enzyme. On one hand, PFKFB4 synthesizes fructose 2,6-bisphosphate (F2,6-BP) to stimulate glycolysis, playing important roles in metabolic processes. On the other hand, PFKFB4 acts as a phosphatase to hydrolyze F2,6-BP into fructose-6-phosphate (F6P) and inorganic phosphate (Pi), functioning as a protein kinase to phosphorylate protein substrates. The dual function of PFKFB4 makes it involved in multiple biological processes such as cell cycle regulation, cell proliferation and transcriptional regulation(PMID: 33593309). PFKFB4 has been reported to be involved in a variety of cancers including human bladder cancer, gastric cancer, colon cancer, breast cancer and other malignant tumors(PMID: 21396842, PMID: 33732372, PMID: 31244553).

Lagerung

Lagerungsbedingungen:

Bei -20°C lagern. Nach dem Versand ein Jahr lang stabil

Lagerungspuffer:

PBS mit 0.02% Natriumazid und 50% Glycerin pH 7.3.

Aliquotieren ist nicht notwendig bei -20°C Lagerung

*** 20ul-Größen enthalten 0.1% BSA

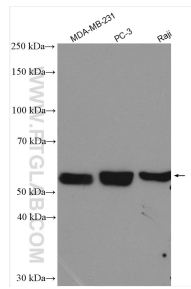
For technical support and original validation data for this product please contact:

T: 1 (888) 4PTGLAB (1-888-478-4522) (toll free in USA), or 1(312) 455-8498 (outside USA)

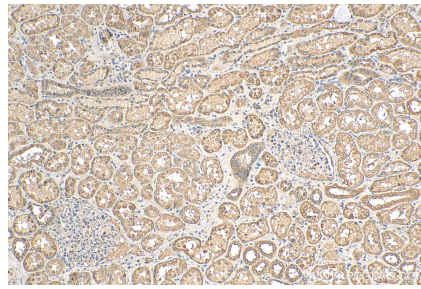
E: proteintech@ptglab.com
W: ptglab.com

This product is exclusively available under Proteintech Group brand and is not available to purchase from any other manufacturer.

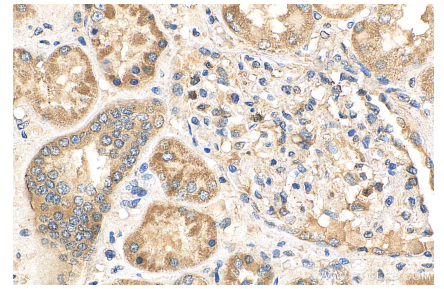
Ausgewählte Validierungsdaten



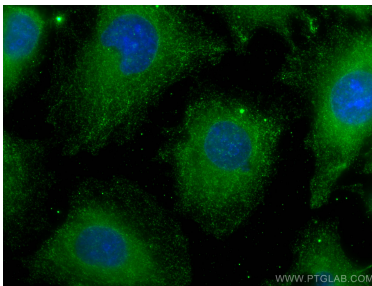
Various lysates were subjected to SDS PAGE followed by western blot with 29902-1-AP (PFKFB4 antibody) at dilution of 1:2000 incubated at room temperature for 1.5 hours.



Immunohistochemical analysis of paraffin-embedded human kidney tissue slide using 29902-1-AP (PFKFB4 antibody) at dilution of 1:200 (under 10x lens). Heat mediated antigen retrieval with Tris-EDTA buffer (pH 9.0).



Immunohistochemical analysis of paraffin-embedded human kidney tissue slide using 29902-1-AP (PFKFB4 antibody) at dilution of 1:200 (under 40x lens). Heat mediated antigen retrieval with Tris-EDTA buffer (pH 9.0).



Immunofluorescent analysis of (-20°C Methanol) fixed HUVEC cells using PFKFB4 antibody (29902-1-AP) at dilution of 1:400 and CoraLite®488-Conjugated AffiniPure Goat Anti-Rabbit IgG(H+L).