

Allgemeine Informationen

Katalog-Nr.: 29903-1-AP	GenBank-Zugangsnummer: NM_001031717	Reinigungsmethode: Antigen-Affinitätsreinigung
Größe: 150ul , Konzentration: 1400 µg/ml von78987	GeneID (NCBI): 150000	Empfohlene Verdünnungen: WB 1:1000-1:6000
Nanodrop;	Vollständiger Name: cysteine-rich with EGF-like domains 1	IHC 1:50-1:500
Wirt: Kaninchen	Berechnete Masse: 45KD	IF 1:200-1:800
Isotyp: IgG	Beobachtete Masse: 45, 70-75 kDa	
Immunogen Katalognummer: AG31593		

Anwendungen

Geprüfte Anwendungen:

IF, IHC, WB, ELISA

Getestete Reaktivität:

Human, Maus, Ratte

Hinweis-IHC: Antigendemaskierung mit TE-Puffer pH 9,0 empfohlen. (*) Wahlweise kann die Antigendemaskierung auch mit Citratpuffer pH 6,0 erfolgen.

Positivkontrollen:

WB : HepG2-Zellen, Mauslungengewebe, Rattenlungengewebe

IHC : Mausherzgewebe,

IF : U2OS-Zellen,

Hintergrundinformationen

CRELD1 (Cysteine-rich with EGF-like domain protein 1) belongs to matricellular proteins family. The encoded protein has a cysteine-rich with epidermal growth factor-like domain (PubMed: 12137942). Mutations in CRELD1 are the cause of atrioventricular septal defect (PubMed: 24697899). Alternate splicing results in multiple transcript variants. CRELD1 can be detected as 70-75 kDa in mouse lung (PMID: 24697899).

Lagerung

Lagerungsbedingungen:

Bei -20°C lagern. Nach dem Versand ein Jahr lang stabil

Lagerungspuffer:

PBS mit 0.02% Natriumazid und 50% Glycerin pH 7.3.

Aliquotieren ist nicht notwendig bei -20°C Lagerung

*** 20ul-Größen enthalten 0.1% BSA

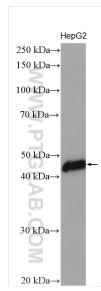
For technical support and original validation data for this product please contact:

T: 1 (888) 4PTGLAB (1-888-478-4522) (toll free in USA), or 1(312) 455-8498 (outside USA)

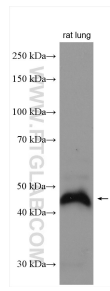
E: proteintech@ptglab.com
W: ptglab.com

This product is exclusively available under Proteintech Group brand and is not available to purchase from any other manufacturer.

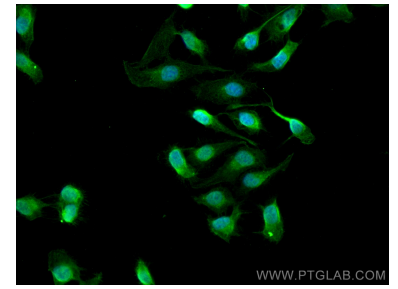
Ausgewählte Validierungsdaten



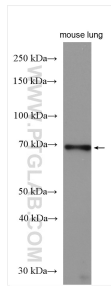
HepG2 cells were subjected to SDS PAGE followed by western blot with 29903-1-AP (CRELD1 antibody) at dilution of 1:3000 incubated at room temperature for 1.5 hours.



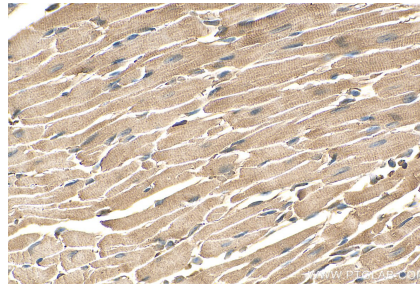
rat lung tissue were subjected to SDS PAGE followed by western blot with 29903-1-AP (CRELD1 antibody) at dilution of 1:2000 incubated at room temperature for 1.5 hours.



Immunofluorescent analysis of (4% PFA) fixed U2OS cells using CRELD1 antibody (29903-1-AP) at dilution of 1:400 and CoraLite®488-Conjugated AffiniPure Goat Anti-Rabbit IgG(H+L).



mouse lung tissue were subjected to SDS PAGE followed by western blot with 29903-1-AP (CRELD1 antibody) at dilution of 1:2000 incubated at room temperature for 1.5 hours.



Immunohistochemical analysis of paraffin-embedded mouse heart tissue slide using 29903-1-AP (CRELD1 antibody) at dilution of 1:200 (under 40x lens). Heat mediated antigen retrieval with Tris-EDTA buffer (pH 9.0).