

Nur für Forschungszwecke

# GPR179 Polyklonaler Antikörper

Katalog-Nr.:29934-1-AP



## Allgemeine Informationen

<b>Katalog-Nr.:</b> 29934-1-AP	<b>GenBank-Zugangsnummer:</b> NM_001004334.3	<b>Reinigungsmethode:</b> Antigen-Affinitätsreinigung
<b>Größe:</b> 150ul , Konzentration: 900 µg/ml von Nanodrop;	<b>GeneID (NCBI):</b> 440435	<b>Empfohlene Verdünnungen:</b> WB 1:1000-1:6000 IHC 1:250-1:1000 IF 1:50-1:500
<b>Wirt:</b> Kaninchen	<b>Vollständiger Name:</b> G protein-coupled receptor 179	
<b>Isotyp:</b> IgG	<b>Berechnete Masse:</b> 257 kDa	
<b>Immunogen Katalognummer:</b> AG32180	<b>Beobachtete Masse:</b> 260-270 kDa	

## Anwendungen

**Geprüfte Anwendungen:**  
IF, IHC, WB, ELISA

**Getestete Reaktivität:**  
Human, Maus

**Hinweis-IHC: Antigenmaskierung mit TE-Puffer pH 9,0 empfohlen. (\*) Wahlweise kann die Antigenmaskierung auch mit Citratpuffer pH 6,0 erfolgen.**

**Positivkontrollen:**

WB : HeLa-Zellen,  
IHC : Mauslebergewebe,  
IF : Maus-Augengewebe,

## Hintergrundinformationen

GPR179 (Probable G-protein coupled receptor 179) belongs to the glutamate receptor subfamily of GPCRs, which is involved in signal transduction through retinal depolarizing bipolar cells. The protein has an EGF-like calcium binding domain and a seven transmembrane domain in the N-terminal region of the protein. Mutations in this gene are associated with congenital stationary night blindness type 1E. GPR179 is expressed in retinal bipolar cells and upregulated in rd1 mice retina with Pde6b mutations (PubMed: 22325361, PubMed: 22325362).

## Lagerung

**Lagerungsbedingungen:**

Bei -20°C lagern. Nach dem Versand ein Jahr lang stabil

**Lagerungspuffer:**

PBS mit 0.02% Natriumazid und 50% Glycerin pH 7.3.

Aliquotieren ist nicht notwendig bei -20°C Lagerung

**\*\*\* 20ul-Größen enthalten 0.1% BSA**

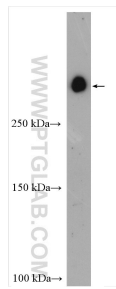
For technical support and original validation data for this product please contact:

T: 1 (888) 4PTGLAB (1-888-478-4522) (toll free  
in USA), or 1(312) 455-8498 (outside USA)

E: proteintech@ptglab.com  
W: ptglab.com

**This product is exclusively available under Proteintech Group brand and is not available to purchase from any other manufacturer.**

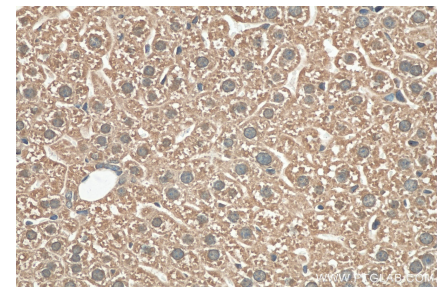
## Ausgewählte Validierungsdaten



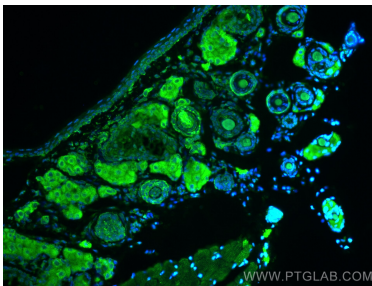
HeLa cells were subjected to SDS PAGE followed by western blot with 29934-1-AP (GPR179 antibody) at dilution of 1:3000 incubated at room temperature for 1.5 hours.



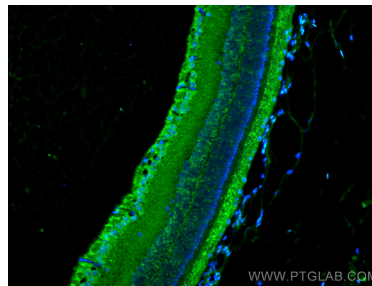
Immunohistochemical analysis of paraffin-embedded mouse liver tissue slide using 29934-1-AP (GPR179 antibody) at dilution of 1:500 (under 10x lens). Heat mediated antigen retrieval with Tris-EDTA buffer (pH 9.0).



Immunohistochemical analysis of paraffin-embedded mouse liver tissue slide using 29934-1-AP (GPR179 antibody) at dilution of 1:500 (under 40x lens). Heat mediated antigen retrieval with Tris-EDTA buffer (pH 9.0).



Immunofluorescent analysis of (4% PFA) fixed mouse eye tissue using GPR179 antibody (29934-1-AP) at dilution of 1:200 and CoraLite®488-Conjugated AffiniPure Goat Anti-Rabbit IgG(H+L).



Immunofluorescent analysis of (4% PFA) fixed mouse eye tissue using GPR179 antibody (29934-1-AP) at dilution of 1:200 and CoraLite®488-Conjugated AffiniPure Goat Anti-Rabbit IgG(H+L).