

Nur für Forschungszwecke

# MAP3K10 Polyklonaler Antikörper

Katalog-Nr.:29985-1-AP



## Allgemeine Informationen

<b>Katalog-Nr.:</b> 29985-1-AP	<b>GenBank-Zugangsnummer:</b> NM_002446	<b>Reinigungsmethode:</b> Antigen-Affinitätsreinigung
<b>Größe:</b> 150ul , Konzentration: 500 µg/ml von Nanodrop;	<b>GeneID (NCBI):</b> 4294	<b>Empfohlene Verdünnungen:</b> WB 1:20000-1:100000
<b>Wirt:</b> Kaninchen	<b>Vollständiger Name:</b> mitogen-activated protein kinase kinase kinase 10	
<b>Isotyp:</b> IgG	<b>Berechnete Masse:</b> 104KD	
<b>Immunogen Katalognummer:</b> AG32419	<b>Beobachtete Masse:</b> 104-115 kDa	

## Anwendungen

<b>Geprüfte Anwendungen:</b> WB, ELISA	<b>Positivkontrollen:</b> WB : Maus-Skelettmuskelgewebe, Ratten-Skelettmuskelgewebe
<b>Getestete Reaktivität:</b> Human, Maus, Ratte	

## Hintergrundinformationen

MAP3K10, also named as MLK2 and MST, belongs to the protein kinase superfamily, STE Ser/Thr protein kinase family and MAP kinase kinase kinase subfamily. MAP3K10 activates the JUN N-terminal pathway. MAP3K10 catalyzes the reaction: ATP + a protein = ADP + a phosphoprotein. MAP3K10 can be detected 104-115 kDa by phosphorylation (PMID: 23178452).

## Lagerung

**Lagerungsbedingungen:**  
Bei -20°C lagern. Nach dem Versand ein Jahr lang stabil  
**Lagerungspuffer:**  
PBS mit 0.02% Natriumazid und 50% Glycerin pH 7.3.  
Aliquotieren ist nicht notwendig bei -20°C Lagerung

\*\*\* 20ul-Größen enthalten 0.1% BSA

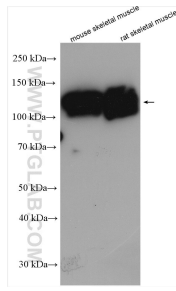
For technical support and original validation data for this product please contact:

T: 1 (888) 4PTGLAB (1-888-478-4522) (toll free in USA), or 1(312) 455-8498 (outside USA)

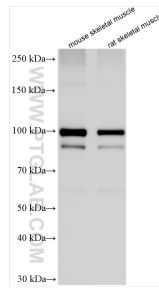
E: [proteintech@ptglab.com](mailto:proteintech@ptglab.com)  
W: [ptglab.com](http://ptglab.com)

This product is exclusively available under Proteintech Group brand and is not available to purchase from any other manufacturer.

## Ausgewählte Validierungsdaten



Various lysates were subjected to SDS PAGE followed by western blot with 29985-1-AP (MAP3K10 antibody) at dilution of 1:5000 incubated at room temperature for 1.5 hours.



Various lysates were subjected to SDS PAGE followed by western blot with 29985-1-AP (MAP3K10 antibody) at dilution of 1:50000 incubated at room temperature for 1.5 hours.