

Nur für Forschungszwecke

# Fibulin 5 Polyklonaler Antikörper

Katalog-Nr.:29992-1-AP



## Allgemeine Informationen

<b>Katalog-Nr.:</b> 29992-1-AP	<b>GenBank-Zugangsnummer:</b> BC022280	<b>Reinigungsmethode:</b> Antigen-Affinitätsreinigung
<b>Größe:</b> 150ul , Konzentration: 400 µg/ml von Nanodrop;	<b>GeneID (NCBI):</b> 10516	<b>Empfohlene Verdünnungen:</b> WB 1:2000-1:10000 IHC 1:50-1:500
<b>Wirt:</b> Kaninchen	<b>Vollständiger Name:</b> fibulin 5	
<b>Isotyp:</b> IgG	<b>Berechnete Masse:</b> 448 aa, 50 kDa	
<b>Immunogen Katalognummer:</b> AG30835	<b>Beobachtete Masse:</b> 65-70 kDa	

## Anwendungen

### Geprüfte Anwendungen:

IHC, WB, ELISA

### Getestete Reaktivität:

Human, Maus, Ratte

**Hinweis-IHC: Antigendemaskierung mit TE-Puffer pH 9,0 empfohlen. (\*) Wahlweise kann die Antigendemaskierung auch mit Citratpuffer pH 6,0 erfolgen.**

### Positivkontrollen:

WB : Mausherzgewebe, Mausnierengewebe, Rattenherzgewebe

IHC : humanes Kolonkarzinomgewebe, humanes Lungenkarzinomgewebe

## Hintergrundinformationen

Fibulin-5, also known as EVEC and DANCE, is an extracellular matrix glycoprotein, secreted by various cell types such as vascular smooth muscle cells, fibroblasts and endothelial cells. Structurally, Fibulin-5 contains an Arg-Gly-Asp (RGD) motif and calcium-binding EGF-like domains. It promotes adhesion of endothelial cells through interaction of integrins and the RGD motif. FBLN5 mutations have been described in patients with age-related macular degeneration, as well as being involved in Charcot-Marie-Tooth neuropathies.

## Lagerung

### Lagerungsbedingungen:

Bei -20°C lagern. Nach dem Versand ein Jahr lang stabil

### Lagerungspuffer:

PBS mit 0.02% Natriumazid und 50% Glycerin pH 7.3.

Aliquotieren ist nicht notwendig bei -20°C Lagerung

\*\*\* 20ul-Größen enthalten 0.1% BSA

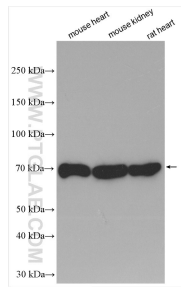
For technical support and original validation data for this product please contact:

T: 1 (888) 4PTGLAB (1-888-478-4522) (toll free in USA), or 1(312) 455-8498 (outside USA)

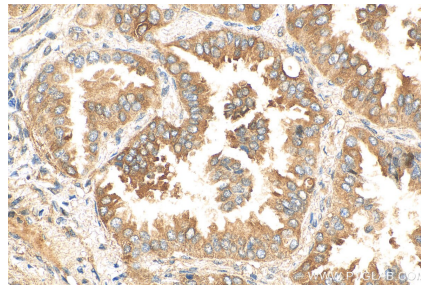
E: proteintech@ptglab.com  
W: ptglab.com

This product is exclusively available under Proteintech Group brand and is not available to purchase from any other manufacturer.

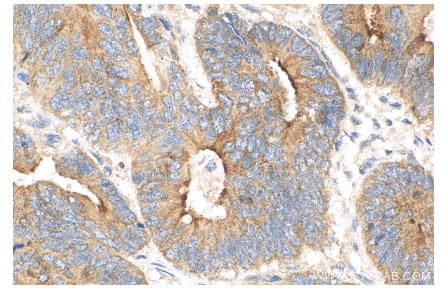
## Ausgewählte Validierungsdaten



Various lysates were subjected to SDS PAGE followed by western blot with 29992-1-AP (Fibulin 5 antibody) at dilution of 1:5000 incubated at room temperature for 1.5 hours.



Immunohistochemical analysis of paraffin-embedded human lung cancer tissue slide using 29992-1-AP (Fibulin 5 antibody) at dilution of 1:200 (under 40x lens). Heat mediated antigen retrieval with Tris-EDTA buffer (pH 9.0).



Immunohistochemical analysis of paraffin-embedded human colon cancer tissue slide using 29992-1-AP (Fibulin 5 antibody) at dilution of 1:200 (under 40x lens). Heat mediated antigen retrieval with Tris-EDTA buffer (pH 9.0).