

Nur für Forschungszwecke

Rabbit IgG control Polyklonaler Antikörper



Katalog-Nr.: 30000-0-AP

149 Publikationen

Allgemeine Informationen

Katalog-Nr.:

30000-0-AP

Größe:

1mg, Konzentration: 1 mg/ml von Nanodrop und 1 mg/ml durch die Bradford-Methode mit BSA als Standard;

Wirt:

Kaninchen

Isotyp:

IgG

Reinigungsmethode:

Protein A affinity purification

Empfohlene Verdünnungen:

WB 1:2000-1:20000

Anwendungen

Geprüfte Anwendungen:

FC, IP, WB, ELISA

In Publikationen genannte Anwendungen:

Cell treatment, ChIP, CoIP, FC, IHC, IP, RIP, WB

Getestete Reaktivität:

Zitierte Arten:

Human, Maus, Ratte

Positivkontrollen:

WB : Protein, Kontrolle

Hintergrundinformationen

This product is Normal rabbit IgG (without immunized) which purified with Protein A. Normal Rabbit IgG is an isotype control antibody, which is used to estimate the non-specific binding of target primary antibodies due to Fc receptor binding or other protein-protein interactions. An isotype control antibody should have the same immunoglobulin type and be used at the same concentration as the test antibody.

Bemerkenswerte Veröffentlichungen

Verfasser	Pubmed ID	Journal	Anwendung
Jinguo Xia	36225644	Am J Cancer Res	RIP
Yan Pan	36174379	Biomed Pharmacother	WB
Duraisamy Kempuraj	28952015	J Neuroimmune Pharmacol	

Lagerung

Lagerungsbedingungen:

Bei -20°C lagern. Nach dem Versand ein Jahr lang stabil

Lagerungspuffer:

PBS mit 0.02% Natriumazid und 50% Glycerin pH 7.3.

Aliquotieren ist nicht notwendig bei -20°C Lagerung

*** 20ul-Größen enthalten 0.1% BSA

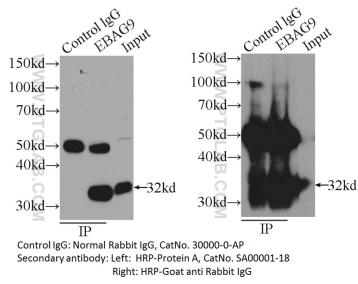
For technical support and original validation data for this product please contact:

T: 1 (888) 4PTGLAB (1-888-478-4522) (toll free in USA), or 1(312) 455-8498 (outside USA)

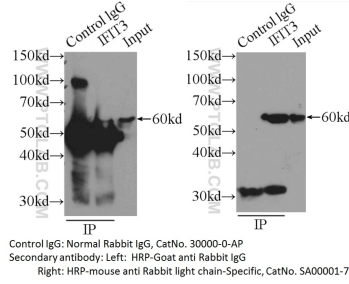
E: proteintech@ptglab.com
W: ptglab.com

This product is exclusively available under Proteintech Group brand and is not available to purchase from any other manufacturer.

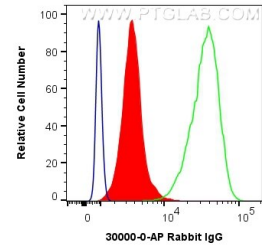
Ausgewählte Validierungsdaten



IP sample detected with different secondary antibodies. Normal Rabbit IgG (30000-0-AP) as control.



IP sample detected with different secondary antibodies. Normal Rabbit IgG (30000-0-AP) as control.



1X10⁶ Jurkat cells were intracellularly stained with 0.2 ug Anti-Rabbit IgG control (30000-0-AP) and CoraLite®488-Conjugated AffiniPure Goat Anti-Rabbit IgG(H+L) at dilution 1:1000 (red), or 0.2 ug Control Antibody. Cells were fixed with 4% PFA and permeabilized with Flow Cytometry Perm Buffer (PF00011-C).