

Nur für Forschungszwecke

# AP2A1 Polyklonaler Antikörper

Katalog-Nr.:30030-1-AP



## Allgemeine Informationen

<b>Katalog-Nr.:</b> 30030-1-AP	<b>GenBank-Zugangsnummer:</b> BC014214	<b>Reinigungsmethode:</b> Antigen-Affinitätsreinigung
<b>Größe:</b> 150ul , Konzentration: 600 µg/ml von Nanodrop;	<b>GeneID (NCBI):</b> 160	<b>Empfohlene Verdünnungen:</b> WB 1:2000-1:12000
<b>Wirt:</b> Kaninchen	<b>Vollständiger Name:</b> adaptor-related protein complex 2, alpha 1 subunit	
<b>Isotyp:</b> IgG	<b>Berechnete Masse:</b> 977 aa, 108 kDa	
<b>Immunogen Katalognummer:</b> AG32232	<b>Beobachtete Masse:</b> 108 kDa	

## Anwendungen

<b>Geprüfte Anwendungen:</b> WB, ELISA	<b>Positivkontrollen:</b> WB : A431-Zellen, HEK-293-Zellen, Mausnierengewebe, MCF-7-Zellen, Rattennierengewebe, SH-SY5Y-Zellen, SKOV-3-Zellen
<b>Getestete Reaktivität:</b> Human, Maus, Ratte	

## Hintergrundinformationen

AP2A1 encodes adaptor protein complex 2 (AP-2) subunit alpha-1, which is a 100 kDa coated vesicle protein. Adaptor protein (AP) complexes are cytosolic heterotetramers that mediate the sorting of membrane proteins in the secretory and endocytic pathways. AP complexes are involved in the formation of clathrin-coated vesicles (CCVs) by recruiting the scaffold protein, clathrin. AP complexes also play a pivotal role in the cargo selection by recognizing the sorting signals within the cytoplasmic tail of integral membrane proteins. AP-2 is involved in clathrin-dependent endocytosis.

## Lagerung

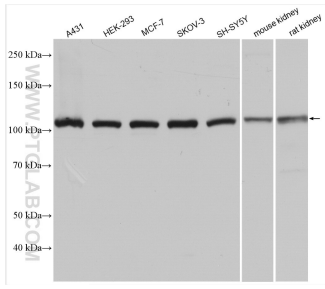
**Lagerungsbedingungen:**  
Bei -20°C lagern. Nach dem Versand ein Jahr lang stabil  
**Lagerungspuffer:**  
PBS mit 0.02% Natriumazid und 50% Glycerin pH 7.3.  
Aliquotieren ist nicht notwendig bei -20°C Lagerung

**\*\*\* 20ul-Größen enthalten 0.1% BSA**

For technical support and original validation data for this product please contact:  
T: 1 (888) 4PTGLAB (1-888-478-4522) (toll free in USA), or 1(312) 455-8498 (outside USA)      E: proteintech@ptglab.com  
W: ptglab.com

This product is exclusively available under Proteintech Group brand and is not available to purchase from any other manufacturer.

## Ausgewählte Validierungsdaten



Various lysates were subjected to SDS PAGE followed by western blot with 30030-1-AP (AP2A1 antibody) at dilution of 1:6000 incubated at room temperature for 1.5 hours.