

Nur für Forschungszwecke

# KEAP1 Polyklonaler Antikörper

Katalog-Nr.:30041-1-AP



## Allgemeine Informationen

<b>Katalog-Nr.:</b> 30041-1-AP	<b>GenBank-Zugangsnummer:</b> BC002930	<b>Reinigungsmethode:</b> Antigen-Affinitätsreinigung
<b>Größe:</b> 150ul , Konzentration: 600 µg/ml von Nanodrop;	<b>GeneID (NCBI):</b> 9817	<b>Empfohlene Verdünnungen:</b> WB 1:5000-1:50000
<b>Wirt:</b> Kaninchen	<b>Vollständiger Name:</b> kelch-like ECH-associated protein 1	
<b>Isotyp:</b> IgG	<b>Berechnete Masse:</b> 624 aa, 70 kDa	
<b>Immunogen Katalognummer:</b> AG32512	<b>Beobachtete Masse:</b> 55-70 kDa	

## Anwendungen

<b>Geprüfte Anwendungen:</b> WB, ELISA	<b>Positivkontrollen:</b> WB : HEK-293-Zellen, HepG2-Zellen, Jurkat-Zellen, MCF-7-Zellen
<b>Getestete Reaktivität:</b> Human	

## Hintergrundinformationen

KEAP1, also named as INRF2, KIAA0132 and KLHL19, is part of a multiprotein complex that contains the CUL3-ROC1 ubiquitin ligase, which can ubiquitinate the N-terminal domain of NRF2[PMID: 20173742]. Two molecules of KEAP1 bind to two distinct sites in the N-terminal region of NRF2, the ETGE and DLG sites, which affect the KEAP1-NRF2 interaction and/or its physiological consequences[PMID: 22215675]. KEAP1 retains NFE2L2/NRF2 in the cytosol. It functions as substrate adapter protein for the E3 ubiquitin ligase complex formed by CUL3 and RBX1[PMID: 20427290]. It also retains BPTF in the cytosol. This antibody is a rabbit polyclonal antibody raised against residues near the C terminus of human KEAP1.

## Lagerung

**Lagerungsbedingungen:**  
Bei -20°C lagern. Nach dem Versand ein Jahr lang stabil

**Lagerungspuffer:**  
PBS mit 0.02% Natriumazid und 50% Glycerin pH 7.3.

Aliquotieren ist nicht notwendig bei -20°C Lagerung

\*\*\* 20ul-Größen enthalten 0.1% BSA

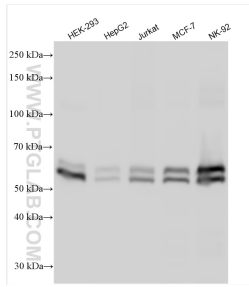
For technical support and original validation data for this product please contact:

T: 1 (888) 4PTGLAB (1-888-478-4522) (toll free  
in USA), or 1(312) 455-8498 (outside USA)

E: [proteintech@ptglab.com](mailto:proteintech@ptglab.com)  
W: [ptglab.com](http://ptglab.com)

This product is exclusively available under Proteintech Group brand and is not available to purchase from any other manufacturer.

## Ausgewählte Validierungsdaten



Various lysates were subjected to SDS PAGE followed by western blot with 30041-1-AP (KEAP1 antibody) at dilution of 1:10000 incubated at room temperature for 1.5 hours.