

Allgemeine Informationen

Katalog-Nr.: 30119-1-AP	GenBank-Zugangsnummer: NM_001177663.1	Reinigungsmethode: Antigen-Affinitätsreinigung
Größe: 150ul , Konzentration: 600 µg/ml von Nanodrop;	GeneID (NCBI): 55183	Empfohlene Verdünnungen: WB 1:1000-1:4000 IHC 1:400-1:1600 IF 1:600-1:2400
Wirt: Kaninchen	Vollständiger Name: RAP1 interacting factor homolog (yeast)	
Isotyp: IgG	Berechnete Masse: 274 kDa	
Immunogen Katalognummer: AG32422	Beobachtete Masse: 300 kDa	

Anwendungen

Geprüfte Anwendungen:

IF, IHC, WB, ELISA

Getestete Reaktivität:

Human

Hinweis-IHC: Antigendemaskierung mit TE-Puffer pH 9,0 empfohlen. (*) Wahlweise kann die Antigendemaskierung auch mit Citratpuffer pH 6,0 erfolgen.

Positivkontrollen:

WB: A431-Zellen, HEK-293T-Zellen, HeLa-Zellen, HepG2-Zellen, HT-29-Zellen, MCF-7-Zellen

IHC: humanes Zervixkarzinomgewebe,

IF: HeLa-Zellen, HEK-293-Zellen

Hintergrundinformationen

RIF1 (Rap1-interacting factor 1) is a multifunctional chromosome stability protein implicated in controlling DNA replication and repair. Human RIF1 can interact with protein phosphatase 1 (PP1) and the interaction is crucial for controlling DNA replication by limiting phosphorylation of the MCM complex (PMID: 28077461). RIF1 also acts with PP1 to protect nascent DNA from overdegradation at stalled replication forks (PMID: 31141682). RIF1 promotes non-homologous end joining (NHEJ) in double strand break (DSB) repair (PMID: 30443189). Research studies show that RIF1 is overexpressed in breast cancer tissues and is upregulated in NSCLC tissues (PMID: 30237512).

Lagerung

Lagerungsbedingungen:

Bei -20°C lagern. Nach dem Versand ein Jahr lang stabil

Lagerungspuffer:

PBS mit 0.02% Natriumazid und 50% Glycerin pH 7.3.

Aliquotieren ist nicht notwendig bei -20°C Lagerung

*** 20ul-Größen enthalten 0.1% BSA

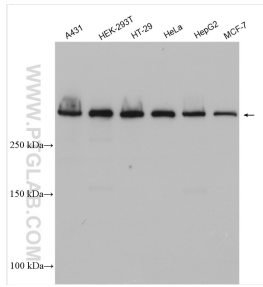
For technical support and original validation data for this product please contact:

T: 1 (888) 4PTGLAB (1-888-478-4522) (toll free in USA), or 1(312) 455-8498 (outside USA)

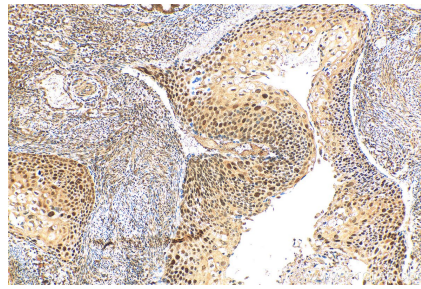
E: proteintech@ptglab.com
W: ptglab.com

This product is exclusively available under Proteintech Group brand and is not available to purchase from any other manufacturer.

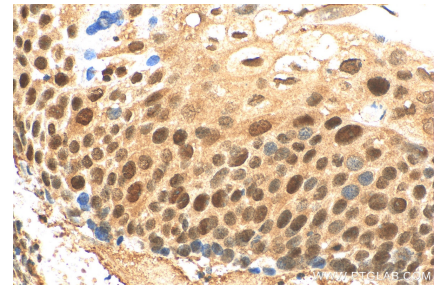
Ausgewählte Validierungsdaten



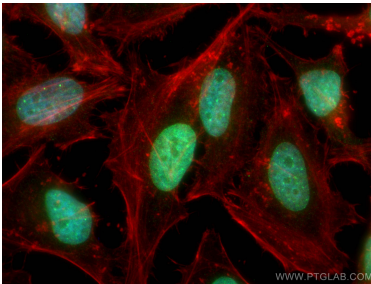
Various lysates were subjected to SDS PAGE followed by western blot with 30119-1-AP (RIF1 antibody) at dilution of 1:2000 incubated at room temperature for 1.5 hours.



Immunohistochemical analysis of paraffin-embedded human cervical cancer tissue slide using 30119-1-AP (RIF1 antibody) at dilution of 1:800 (under 10x lens). Heat mediated antigen retrieval with Tris-EDTA buffer (pH 9.0).



Immunohistochemical analysis of paraffin-embedded human cervical cancer tissue slide using 30119-1-AP (RIF1 antibody) at dilution of 1:800 (under 40x lens). Heat mediated antigen retrieval with Tris-EDTA buffer (pH 9.0).



Immunofluorescent analysis of (4% PFA) fixed HeLa cells using RIF1 antibody (30119-1-AP) at dilution of 1:1200 and CoraLite®488-Conjugated AffiniPure Goat Anti-Rabbit IgG(H+L), CL594-Phalloidin (red).