

Nur für Forschungszwecke

PELP1 Polyklonaler Antikörper

Katalog-Nr.:30135-1-AP



Allgemeine Informationen

Katalog-Nr.: 30135-1-AP	GenBank-Zugangsnummer: BC069058	Reinigungsmethode: Antigen-Affinitätsreinigung
Größe: 150ul, Konzentration: 500 µg/ml von Nanodrop;	GeneID (NCBI): 27043	Empfohlene Verdünnungen: WB 1:5000-1:50000 IHC 1:50-1:500 IF 1:50-1:500
Wirt: Kaninchen	Vollständiger Name: proline, glutamate and leucine rich protein 1	
Isotyp: IgG	Berechnete Masse: 1130 aa, 120 kDa	
Immunogen Katalognummer: AG32720	Beobachtete Masse: 160 kDa	

Anwendungen

Geprüfte Anwendungen:

IF, IHC, WB, ELISA

Getestete Reaktivität:

Human, Maus

Hinweis-IHC: Antigendemaskierung mit TE-Puffer pH 9,0 empfohlen. (*) Wahlweise kann die Antigendemaskierung auch mit Citratpuffer pH 6,0 erfolgen.

Positivkontrollen:

WB : HEK-293-Zellen, HeLa-Zellen, MCF-7-Zellen, RAW 264.7-Zellen

IHC : Maushodengewebe, humanes Lebergewebe

IF : MCF-7-Zellen,

Hintergrundinformationen

PELP1 was first identified as a 160 kDa protein in a screen for Src homology 2 (SH2) domain-binding proteins. PELP1 is overexpressed in 60-80% of breast tumors and plays important roles in both ER genomic and non-genomic signaling. In vivo, PELP1 subcellular localization is primarily nuclear in normal breast tissue, but it is localized to the cytoplasm in about 40% of invasive breast tumors. In the nucleus, PELP1 interacts with a number of transcription factors. The proto-oncogenic functions of PELP1 involve different cellular processes including epigenetic modifications leading to ER transactivation and breast cancer progression. Furthermore, PELP1 activates kinase cascades in the cytoplasm such as MAPK activation via c-Src and PI3K signaling.

Lagerung

Lagerungsbedingungen:

Bei -20°C lagern. Nach dem Versand ein Jahr lang stabil

Lagerungspuffer:

PBS mit 0.02% Natriumazid und 50% Glycerin pH 7.3.

Aliquotieren ist nicht notwendig bei -20°C Lagerung

*** 20ul-Größen enthalten 0.1% BSA

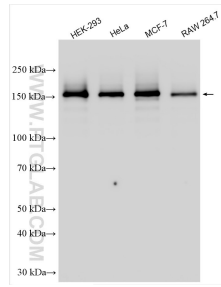
For technical support and original validation data for this product please contact:

T: 1 (888) 4PTGLAB (1-888-478-4522) (toll free in USA), or 1(312) 455-8498 (outside USA)

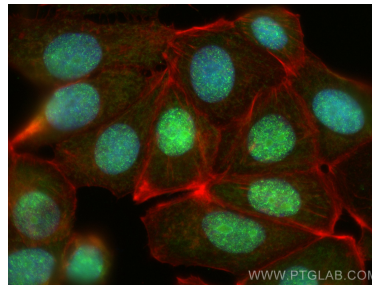
E: proteintech@ptglab.com
W: ptglab.com

This product is exclusively available under Proteintech Group brand and is not available to purchase from any other manufacturer.

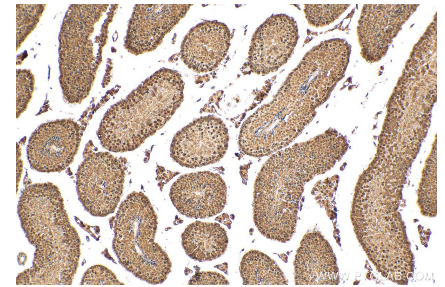
Ausgewählte Validierungsdaten



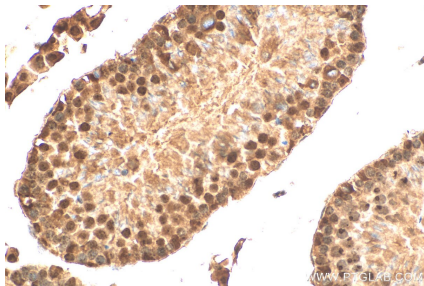
Various lysates were subjected to SDS PAGE followed by western blot with 30135-1-AP (PELP1 antibody) at dilution of 1:15000 incubated at room temperature for 1.5 hours.



Immunofluorescent analysis of (4% PFA) fixed MCF-7 cells using PELP1 antibody (30135-1-AP) at dilution of 1:200 and CoraLite®488-Conjugated AffiniPure Goat Anti-Rabbit IgG(H+L), CL594-Phalloidin (red).



Immunohistochemical analysis of paraffin-embedded mouse testis tissue slide using 30135-1-AP (PELP1 antibody) at dilution of 1:200 (under 10x lens). Heat mediated antigen retrieval with Tris-EDTA buffer (pH 9.0).



Immunohistochemical analysis of paraffin-embedded mouse testis tissue slide using 30135-1-AP (PELP1 antibody) at dilution of 1:200 (under 40x lens). Heat mediated antigen retrieval with Tris-EDTA buffer (pH 9.0).