

Nur für Forschungszwecke

# CETP Polyklonaler Antikörper

Katalog-Nr.:30136-1-AP



## Allgemeine Informationen

<b>Katalog-Nr.:</b> 30136-1-AP	<b>GenBank-Zugangsnummer:</b> BC025739	<b>Reinigungsmethode:</b> Antigen-Affinitätsreinigung
<b>Größe:</b> 150ul , Konzentration: 400 µg/ml von Nanodrop;	<b>GeneID (NCBI):</b> 1071	<b>Empfohlene Verdünnungen:</b> WB 1:500-1:1000
<b>Wirt:</b> Kaninchen	<b>Vollständiger Name:</b> cholesteryl ester transfer protein, plasma	
<b>Isotyp:</b> IgG	<b>Berechnete Masse:</b> 493 aa, 55 kDa	
<b>Immunogen Katalognummer:</b> AG32722	<b>Beobachtete Masse:</b> 55,70 kDa	

## Anwendungen

<b>Geprüfte Anwendungen:</b> WB, ELISA	<b>Positivkontrollen:</b> WB : HCT 116-Zellen, HepG2-Zellen, HT-29-Zellen, MCF-7-Zellen
<b>Getestete Reaktivität:</b> Human	

## Hintergrundinformationen

Cholesteryl ester transfer protein (CETP) is a plasma glycoprotein which transfers cholesteryl esters, triglycerides, and phospholipids between lipoproteins. In plasma, CETP is mainly associated with HDL particles and catalyzes the transfer of cholesteryl esters from HDL to apolipoprotein (apo) B-containing plasma lipoproteins. Low plasma concentrations of high-density lipoprotein-cholesterol (HDL-C) have long been recognized as a major, independent cardiovascular disease (CVD) risk factor. It demonstrated that altered level of plasma CETP was associated with the increased risk of CVD (PMID: 17991755, PMID: 23477743). CETP can be detected a 70 kDa isoform by glycosylation (PMID: 3281933, PMID: 22056562). It also can be detected 100 kDa dimer (PMID: 7744792).

## Lagerung

**Lagerungsbedingungen:**  
Bei -20°C lagern. Nach dem Versand ein Jahr lang stabil  
**Lagerungspuffer:**  
PBS mit 0.02% Natriumazid und 50% Glycerin pH 7.3.  
Aliquotieren ist nicht notwendig bei -20°C Lagerung

\*\*\* 20ul-Größen enthalten 0.1% BSA

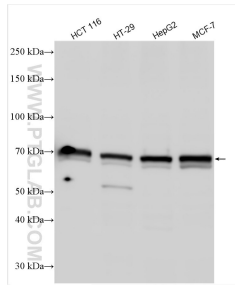
For technical support and original validation data for this product please contact:

T: 1 (888) 4PTGLAB (1-888-478-4522) (toll free  
in USA), or 1(312) 455-8498 (outside USA)

E: [proteintech@ptglab.com](mailto:proteintech@ptglab.com)  
W: [ptglab.com](http://ptglab.com)

This product is exclusively available under Proteintech Group brand and is not available to purchase from any other manufacturer.

## Ausgewählte Validierungsdaten



Various lysates were subjected to SDS PAGE followed by western blot with 30136-1-AP (CETP antibody) at dilution of 1:500 incubated at room temperature for 1.5 hours.