

Nur für Forschungszwecke

# LATS1 Polyklonaler Antikörper

Katalog-Nr.:30174-1-AP



## Allgemeine Informationen

<b>Katalog-Nr.:</b> 30174-1-AP	<b>GenBank-Zugangsnummer:</b> BC002767	<b>Reinigungsmethode:</b> Antigen-Affinitätsreinigung
<b>Größe:</b> 150ul , Konzentration: 850 µg/ml von Nanodrop;	<b>GeneID (NCBI):</b> 9113	<b>Empfohlene Verdünnungen:</b> WB 1:2000-1:14000
<b>Wirt:</b> Kaninchen	<b>Vollständiger Name:</b> LATS, large tumor suppressor, homolog 1 (Drosophila)	
<b>Isotyp:</b> IgG	<b>Beobachtete Masse:</b> 130 kDa	
<b>Immunogen Katalognummer:</b> AG32879		

## Anwendungen

<b>Geprüfte Anwendungen:</b> WB, ELISA	<b>Positivkontrollen:</b> WB : A549-Zellen, HEK-293-Zellen, HepG2-Zellen, K-562-Zellen
<b>Getestete Reaktivität:</b> Human	

## Hintergrundinformationen

LATS1(Large tumor suppressor homolog 1) is also named as WARTS and belongs to the AGC Ser/Thr protein kinase family. The gene encodes a highly conserved (from fly to human) protein kinase that plays a crucial role in the prevention of tumor formation by controlling the progression of mitosis. The expression of both long(170 kDa) and short lats1 isoforms(120 kDa) in vertebrate retinal cells raises the possibility that these lats1 proteins may act as negative key regulators of the cell cycle each of them performing a unique role (PMID:15777619). In mammalian cells, LATS1 was phosphorylated in a cell cycle-dependent manner and complexed with CDC2 in early mitosis (PMID:9988268). LATS1 also can be detected as 120 kDa and 140-150 kDa, and play a key role in the regulation of Hippo pathway (PMID: 27940445).

## Lagerung

**Lagerungsbedingungen:**  
Bei -20°C lagern. Nach dem Versand ein Jahr lang stabil  
**Lagerungspuffer:**  
PBS mit 0.02% Natriumazid und 50% Glycerin pH 7.3.  
**Aliquotieren ist nicht notwendig bei -20°C Lagerung**

**\*\*\* 20ul-Größen enthalten 0.1% BSA**

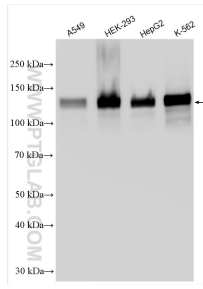
For technical support and original validation data for this product please contact:

T: 1 (888) 4PTGLAB (1-888-478-4522) (toll free in USA), or 1(312) 455-8498 (outside USA)

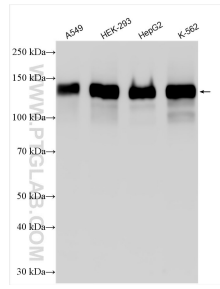
E: [proteintech@ptglab.com](mailto:proteintech@ptglab.com)  
W: [ptglab.com](http://ptglab.com)

**This product is exclusively available under Proteintech Group brand and is not available to purchase from any other manufacturer.**

## Ausgewählte Validierungsdaten



Various lysates were subjected to SDS PAGE followed by western blot with 30174-1-AP (LATS1 antibody) at dilution of 1:3000 incubated at room temperature for 1.5 hours.



Various lysates were subjected to SDS PAGE followed by western blot with 30174-1-AP (LATS1 antibody) at dilution of 1:7000 incubated at room temperature for 1.5 hours.