

Nur für Forschungszwecke

# SHMT1 Polyklonaler Antikörper

Katalog-Nr.:30192-1-AP



## Allgemeine Informationen

<b>Katalog-Nr.:</b> 30192-1-AP	<b>GenBank-Zugangsnummer:</b> BC038598	<b>Reinigungsmethode:</b> Antigen-Affinitätsreinigung
<b>Größe:</b> 150ul , Konzentration: 800 µg/ml von Nanodrop;	<b>GeneID (NCBI):</b> 6470	<b>Empfohlene Verdünnungen:</b> WB 1:5000-1:50000 IHC 1:500-1:2000 IF 1:200-1:800
<b>Wirt:</b> Kaninchen	<b>Vollständiger Name:</b> serine hydroxymethyltransferase 1 (soluble)	
<b>Isotyp:</b> IgG	<b>Berechnete Masse:</b> 483 aa, 53 kDa	
<b>Immunogen Katalognummer:</b> AG31269	<b>Beobachtete Masse:</b> 45-53 kDa	

## Anwendungen

**Geprüfte Anwendungen:**  
FC, IF, IHC, WB, ELISA

**Getestete Reaktivität:**  
Human, Maus, Ratte

**Hinweis-IHC: Antigenmaskierung mit TE-Puffer pH 9,0 empfohlen. (\*) Wahlweise kann die Antigenmaskierung auch mit Citratpuffer pH 6,0 erfolgen.**

**Positivkontrollen:**

**WB:** A431-Zellen, HeLa-Zellen, Mausebergewebe, MCF-7-Zellen, MOLT-4-Zellen, Rattenlebergewebe, T-47D-Zellen

**IHC:** humanes Nierengewebe,

**IF:** HepG2-Zellen,

## Hintergrundinformationen

SHMT1 is the cellular form of serine hydroxymethyltransferase, a pyridoxal phosphate-containing enzyme that catalyzes the reversible conversion of serine and tetrahydrofolate to glycine and 5,10-methylene tetrahydrofolate. Alternative splicing of this gene results in 2 transcript variants encoding 2 different isoforms. This antibody can detect both 49 kDa and 53 kDa isoforms in western blotting.

## Lagerung

**Lagerungsbedingungen:**

Bei -20°C lagern. Nach dem Versand ein Jahr lang stabil

**Lagerungspuffer:**

PBS mit 0.02% Natriumazid und 50% Glycerin pH 7.3.

Aliquotieren ist nicht notwendig bei -20°C Lagerung

**\*\*\* 20ul-Größen enthalten 0.1% BSA**

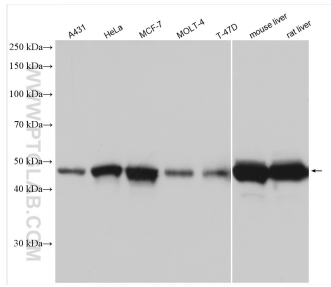
For technical support and original validation data for this product please contact:

T: 1 (888) 4PTGLAB (1-888-478-4522) (toll free in USA), or 1(312) 455-8498 (outside USA)

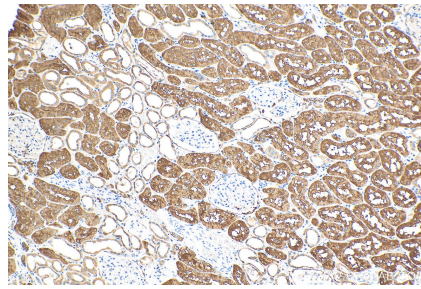
E: proteintech@ptglab.com  
W: ptglab.com

**This product is exclusively available under Proteintech Group brand and is not available to purchase from any other manufacturer.**

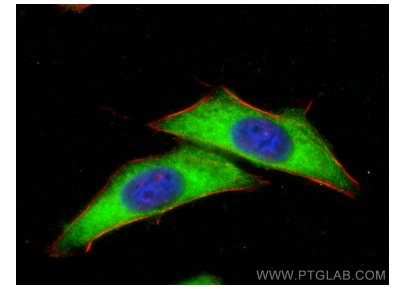
## Ausgewählte Validierungsdaten



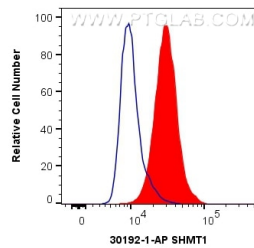
Various lysates were subjected to SDS PAGE followed by western blot with 30192-1-AP (SHMT1 antibody) at dilution of 1:10000 incubated at room temperature for 1.5 hours.



Immunohistochemical analysis of paraffin-embedded human kidney tissue slide using 30192-1-AP (SHMT1 antibody) at dilution of 1:1000 (under 10x lens). Heat mediated antigen retrieval with Tris-EDTA buffer (pH 9.0).



Immunofluorescent analysis of (-20°C Ethanol) fixed HepG2 cells using SHMT1 antibody (30192-1-AP) at dilution of 1:400 and CoraLite@488-Conjugated AffiniPure Goat Anti-Rabbit IgG(H+L), CL594-Phalloidin (red).



1X10<sup>6</sup> HeLa cells were intracellularly stained with 0.4 ug Anti-Human SHMT1 (30192-1-AP) and CoraLite@488-Conjugated AffiniPure Goat Anti-Rabbit IgG(H+L) at dilution 1:1000 (red), or 0.4 ug Control Antibody. Cells were fixed with 4% PFA and permeabilized with Flow Cytometry Perm Buffer (PF00011-C).