

Nur für Forschungszwecke

LRP1 Polyklonaler Antikörper

Katalog-Nr.:30206-1-AP



Allgemeine Informationen

Katalog-Nr.: 30206-1-AP	GenBank-Zugangsnummer: BC045107	Reinigungsmethode: Antigen-Affinitätsreinigung
Größe: 150ul , Konzentration: 300 µg/ml von Nanodrop;	GeneID (NCBI): 4035	Empfohlene Verdünnungen: WB 1:500-1:2000
Wirt: Kaninchen	Vollständiger Name: low density lipoprotein-related protein 1 (alpha-2-macroglobulin receptor)	
Isotyp: IgG	Berechnete Masse: 505 kDa	
Immunogen Katalognummer: AG32507	Beobachtete Masse: 600 kDa	

Anwendungen

Geprüfte Anwendungen: WB, ELISA	Positivkontrollen: WB : HEK-293-Zellen, HeLa-Zellen
Getestete Reaktivität: Human	

Hintergrundinformationen

LRP1 (Pro-low density lipoprotein receptor-related protein 1), also known as A2MR, APOER and CD91, is a type I transmembrane protein that belongs to the LDLR family. LRP1 is synthesized as a transmembrane glycosylated precursor of 600 kDa, and is subsequently cleaved to generate a large 515-kDa N-terminal extracellular subunit and an 85-kDa C-terminal transmembrane subunit, which are noncovalently associated with one another (PMID: 2112085; 8546712). LRP1 is a multifunctional receptor involved in the clearance of a large number of diverse ligands and modulating various cellular processes. LRP1 is implicated in conditions such as atherosclerosis, cancer and neurodegenerative diseases (PMID: 28381441). This antibody is raised against 20-170 aa of human LRP1.

Lagerung

Lagerungsbedingungen:
Bei -20°C lagern. Nach dem Versand ein Jahr lang stabil
Lagerungspuffer:
PBS mit 0.02% Natriumazid und 50% Glycerin pH 7.3.
Aliquotieren ist nicht notwendig bei -20°C Lagerung

*** 20ul-Größen enthalten 0.1% BSA

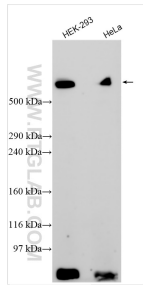
For technical support and original validation data for this product please contact:

T: 1 (888) 4PTGLAB (1-888-478-4522) (toll free
in USA), or 1(312) 455-8498 (outside USA)

E: proteintech@ptglab.com
W: ptglab.com

This product is exclusively available under Proteintech Group brand and is not available to purchase from any other manufacturer.

Ausgewählte Validierungsdaten



Various lysates were subjected to SDS PAGE followed by western blot with 30206-1-AP (LRP1 antibody) at dilution of 1:1000 incubated at room temperature for 1.5 hours.