

Nur für Forschungszwecke

Beta-2-Microglobulin Polyklonaler Antikörper



Katalog-Nr.: 30226-1-AP

Allgemeine Informationen

Katalog-Nr.:
30226-1-AP

Größe:
150ul, Konzentration: 1500 µg/ml von 567
Nanodrop;

Wirt:
Kaninchen

Isotyp:
IgG

GenBank-Zugangsnummer:
BC032589

GeneID (NCBI):
1500

Vollständiger Name:
beta-2-microglobulin

Berechnete Masse:
119 aa, 14 kDa

Beobachtete Masse:
12-14 kDa

Reinigungsmethode:

Antigen-Affinitätsreinigung

Empfohlene Verdünnungen:

WB 1:1000-1:4000

Anwendungen

Geprüfte Anwendungen:

WB, ELISA

Getestete Reaktivität:

Human

Positivkontrollen:

WB: A431-Zellen, HeLa-Zellen, HepG2-Zellen, Jurkat-Zellen, Raji-Zellen, U-937-Zellen

Hintergrundinformationen

Beta-2-microglobulin (B2M) is a component of MHC class I molecules, which are present on the surface of nearly all nucleated cells. It can be found in body fluids under physiologic conditions as a result of shedding from cell surfaces or intracellular release. B2M has various biological functions, including antigen presentation. Investigations reveal that increased synthesis and release of B2M are present in several malignant diseases.

Lagerung

Lagerungsbedingungen:

Bei -20°C lagern. Nach dem Versand ein Jahr lang stabil

Lagerungspuffer:

PBS mit 0.02% Natriumazid und 50% Glycerin pH 7.3.

Aliquotieren ist nicht notwendig bei -20°C Lagerung

*** 20ul-Größen enthalten 0.1% BSA

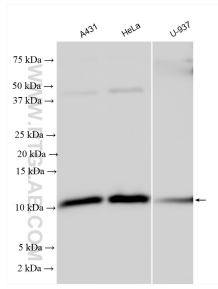
For technical support and original validation data for this product please contact:

T: 1 (888) 4PTGLAB (1-888-478-4522) (toll free
in USA), or 1(312) 455-8498 (outside USA)

E: proteintech@ptglab.com
W: ptglab.com

This product is exclusively available under Proteintech Group brand and is not available to purchase from any other manufacturer.

Ausgewählte Validierungsdaten



Various lysates were subjected to SDS PAGE followed by western blot with 30226-1-AP (Beta-2-Microglobulin antibody) at dilution of 1:2000 incubated at room temperature for 1.5 hours.