

Nur für Forschungszwecke

# IL-1 beta Polyklonaler Antikörper

Katalog-Nr.:30234-1-AP



## Allgemeine Informationen

|  |   |  |
|--|---|--|
| <b>Katalog-Nr.:</b><br>30234-1-AP                                  | <b>GenBank-Zugangsnummer:</b><br>NM_000576        | <b>Reinigungsmethode:</b><br>Antigen-Affinitätsreinigung |
| <b>Größe:</b><br>150ul , Konzentration: 550 µg/ml von<br>Nanodrop; | <b>GeneID (NCBI):</b><br>3553                     | <b>Empfohlene Verdünnungen:</b><br>WB 1:500-1:2000       |
| <b>Wirt:</b><br>Kaninchen  | <b>Vollständiger Name:</b><br>interleukin 1, beta |  |
| <b>Isotyp:</b><br>IgG  | <b>Berechnete Masse:</b><br>31 kDa                |  |
| <b>Immunogen Katalognummer:</b><br>AG30574                         | <b>Beobachtete Masse:</b><br>31 kDa               |  |

## Anwendungen

|   |  |
|---|--|
| <b>Geprüfte Anwendungen:</b><br>WB, ELISA | <b>Positivkontrollen:</b><br>WB : THP-1-Zellen, U-87 MG-Zellen |
| <b>Getestete Reaktivität:</b><br>Human    |  |

## Hintergrundinformationen

Interleukin-1, produced mainly by blood monocytes, mediates the panoply of host reactions collectively known as acute phase response. It is identical to endogenous pyrogen. The multiple biologic activities that define IL1 are properties of a 15- to 18-kD protein that is derived from a 30- to 35-kD precursor. Interleukin 1 $\beta$  (IL-1 $\beta$ ) is a member of the interleukin 1 cytokine family. It is a pro-inflammatory cytokine against infection, playing an important role in the pathogenesis of cancers. It signals through various adaptor proteins and kinases that lead to activation of numerous downstream targets

## Lagerung

**Lagerungsbedingungen:**  
Bei -20°C lagern. Nach dem Versand ein Jahr lang stabil  
**Lagerungspuffer:**  
PBS mit 0.02% Natriumazid und 50% Glycerin pH 7.3.  
Aliquotieren ist nicht notwendig bei -20°C Lagerung

**\*\*\* 20ul-Größen enthalten 0.1% BSA**

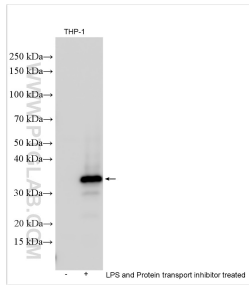
For technical support and original validation data for this product please contact:

T: 1 (888) 4PTGLAB (1-888-478-4522) (toll free  
in USA), or 1(312) 455-8498 (outside USA)

E: proteintech@ptglab.com  
W: ptglab.com

**This product is exclusively available under Proteintech Group brand and is not available to purchase from any other manufacturer.**

## Ausgewählte Validierungsdaten



Untreated, LPS and Protein transport inhibitor treated THP-1 cells were subjected to SDS PAGE followed by western blot with 30234-1-AP (IL1B antibody) at dilution of 1:1000 incubated at room temperature for 1.5 hours.