

Nur für Forschungszwecke

Phospho-EPHA2 (Tyr588) Polyklonaler Antikörper



Katalog-Nr.: 30263-1-AP

Allgemeine Informationen

Katalog-Nr.:
30263-1-AP

Größe:
100ul, Konzentration: 500 µg/ml von
Nanodrop;

Wirt:
Kaninchen

Isotyp:
IgG

GenBank-Zugangsnummer:
BC037166

GeneID (NCBI):
1969

Vollständiger Name:
EPH receptor A2

Berechnete Masse:
976 aa, 108 kDa

Beobachtete Masse:
110 kDa

Reinigungsmethode:

Antigen-Affinitätsreinigung

Empfohlene Verdünnungen:
WB 1:500-1:2000

Anwendungen

Geprüfte Anwendungen:
WB, ELISA

Getestete Reaktivität:
Human

Positivkontrollen:

WB: MG132 treated HepG2 cells,

Hintergrundinformationen

Ephrin type-A receptor 2 (EPHA2), belongs to the receptor tyrosine kinases (RTKs) family, that binds promiscuously membrane-bound ephrin-A family ligands residing on adjacent cells, leading to contact-dependent bidirectional signaling into neighboring cells. Research studies have shown that Eph receptors and ligands may be involved in many diseases including cancer (PMID: 11114742). The "reverse signaling" function, whereby the cytoplasmic domain becomes tyrosine phosphorylated, allows interactions with other proteins that may activate signaling pathways in the ligand-expressing cells. The detected molecular weight is around 110 kDa.

Lagerung

Lagerungsbedingungen:

Bei -20°C lagern. Nach dem Versand ein Jahr lang stabil

Lagerungspuffer:

PBS mit 0.02% Natriumazid und 50% Glycerin pH 7.3.

Aliquotieren ist nicht notwendig bei -20°C Lagerung

*** 20ul-Größen enthalten 0.1% BSA

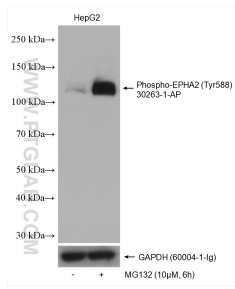
For technical support and original validation data for this product please contact:

T: 1 (888) 4PTGLAB (1-888-478-4522) (toll free
in USA), or 1(312) 455-8498 (outside USA)

E: proteintech@ptglab.com
W: ptglab.com

This product is exclusively available under Proteintech Group brand and is not available to purchase from any other manufacturer.

Ausgewählte Validierungsdaten



Non-treated and MG132 treated HepG2 cells were subjected to SDS PAGE followed by western blot with 30263-1-AP (Phospho-EPHA2 (Tyr588) antibody) at dilution of 1:1000 incubated at room temperature for 1.5 hours. The membrane was stripped and re-blotted with GAPDH antibody as the loading control.