

Allgemeine Informationen

Katalog-Nr.: 50180-1-AP	GenBank-Zugangsnummer: BC053617	Reinigungsmethode: Antigen-Affinitätsreinigung
Größe: 150ul , Konzentration: 850 µg/ml von Nanodrop und 400 µg/ml durch die Bradford-Methode mit BSA als Standard;	GeneID (NCBI): 8915	Empfohlene Verdünnungen: WB 1:1000-1:6000 IHC 1:250-1:1000
Wirt: Kaninchen	Vollständiger Name: B-cell CLL/Lymphoma 10	
Isotyp: IgG	Berechnete Masse: 233 aa, 26 kDa	
Immunogen Katalognummer: AG0037	Beobachtete Masse: 26-32 kDa	

Anwendungen

Geprüfte Anwendungen: FC, IHC, WB, ELISA	Positivkontrollen: WB : A549-Zellen, Jurkat-Zellen, K-562-Zellen, Maus- Eierstockgewebe, Raji-Zellen, Ramos-Zellen, Ratten- Eierstockgewebe
In Publikationen genannte Anwendungen: WB	IHC : humanes Lungenkarzinomgewebe, humanes Kolonkarzinomgewebe
Getestete Reaktivität: Human, Maus, Ratte	
Zitierte Arten: Human, Maus	
Hinweis-IHC: Antigendemaskierung mit TE- Puffer pH 9,0 empfohlen. (*) Wahlweise kann die Antigendemaskierung auch mit Citratpuffer pH 6,0 erfolgen.	

Hintergrundinformationen

The gene encoding BCL10 was identified by its recurrent translocation t(1;14)(p22;q32) in a case of mucosa-associated lymphoid tissue (MALT) lymphoma. BCL10 contains a caspase recruitment domain (CARD), and has been shown to induce apoptosis and to activate NF-kappaB.

Bemerkenswerte Veröffentlichungen

Verfasser	Pubmed ID	Journal	Anwendung
Fatma Aybuke Mazi	36708753	Cell Signal	WB
Dong Wei W	16831874	J Biol Chem	WB
Liu Yingle Y	15213237	J Biol Chem	WB

Lagerung

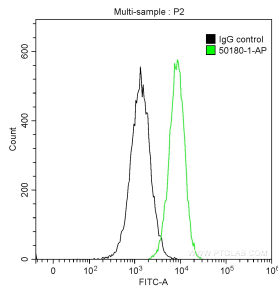
Lagerungsbedingungen:
Bei -20°C lagern.
Lagerungspuffer:
PBS mit 0.02% Natriumazid und 50% Glycerin pH 7.3.
Aliquotieren ist nicht notwendig bei -20°C Lagerung

*** 20ul-Größen enthalten 0.1% BSA

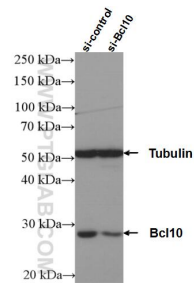
For technical support and original validation data for this product please contact:
T: 1 (888) 4PTGLAB (1-888-478-4522) (toll free in USA), or 1(312) 455-8498 (outside USA)
E: proteintech@ptglab.com
W: ptglab.com

This product is exclusively available under Proteintech Group brand and is not available to purchase from any other manufacturer.

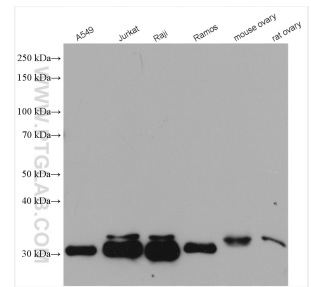
Ausgewählte Validierungsdaten



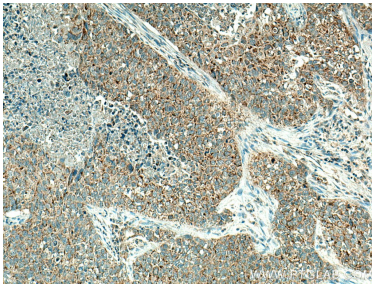
1X10⁶ Jurkat cells were intracellularly stained with 0.2 ug Anti-Human BCL10 (50180-1-AP) and CoraLite®488-Conjugated AffiniPure Goat Anti-Rabbit IgG(H+L) at dilution 1:1000 (green), and 0.2 ug Control Antibody. Cells were fixed with 90% MeOH.



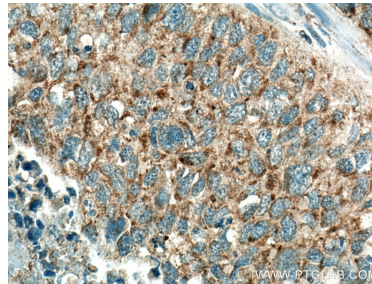
WB result of BCL10 antibody (50180-1-AP; 1:1000; incubated at room temperature for 1.5 hours) with sh-Control and sh-BCL10 transfected K-562 cells.



Various lysates were subjected to SDS PAGE followed by western blot with 50180-1-AP (BCL10 antibody) at dilution of 1:3000 incubated at room temperature for 1.5 hours.



Immunohistochemical analysis of paraffin-embedded human lung cancer tissue slide using 50180-1-AP (BCL10 antibody) at dilution of 1:500 (under 10x lens). Heat mediated antigen retrieval with Tris-EDTA buffer (pH 9.0).



Immunohistochemical analysis of paraffin-embedded human lung cancer tissue slide using 50180-1-AP (BCL10 antibody) at dilution of 1:500 (under 40x lens). Heat mediated antigen retrieval with Tris-EDTA buffer (pH 9.0).