

## Allgemeine Informationen

<b>Katalog-Nr.:</b> 51027-2-AP	<b>GenBank-Zugangsnummer:</b> BC003864	<b>Reinigungsmethode:</b> Antigen-Affinitätsreinigung
<b>Größe:</b> 150ul, Konzentration: 600 µg/ml von Nanodrop;	<b>GeneID (NCBI):</b> 26922	<b>Empfohlene Verdünnungen:</b> WB 1:2000-1:10000 IP 0.5-4.0 µg für IP und 1:500-1:3000 für WB
<b>Wirt:</b> Kaninchen	<b>Vollständiger Name:</b> mitochondrial trans-2-enoyl-CoA reductase	<b>IHC 1:20-1:200</b> <b>IF 1:50-1:500</b>
<b>Isotyp:</b> IgG	<b>Berechnete Masse:</b> 40 kDa	
<b>Immunogen Katalognummer:</b> AG0465	<b>Beobachtete Masse:</b> 37-40 kDa	

## Anwendungen

### Geprüfte Anwendungen:

IF, IHC, IP, WB, ELISA

### In Publikationen genannte Anwendungen:

IF, IHC, WB

### Getestete Reaktivität:

Human, Maus, Ratte

### Zitierte Arten:

Hefe, Human, Maus

**Hinweis-IHC: Antigenmaskierung mit TE-Puffer pH 9,0 empfohlen. (\*) Wahlweise kann die Antigenmaskierung auch mit Citratpuffer pH 6,0 erfolgen.**

### Positivkontrollen:

**WB:** Mausherzgewebe, Maus-Magengewebe, Maus-Skelettmuskelgewebe, Rattenherzgewebe

**IP:** Mausherzgewebe,

**IHC:** humanes Ovarialkarzinomgewebe,

**IF:** C2C12-Zellen,

## Hintergrundinformationen

Mitochondrial Trans-2-Enoyl-CoA Reductase is abbreviated as MECR, involved in human mitochondrial fatty acid synthesis (mtFAS) as an oxidoreductase. (PMID: 27817865) MECR has molecular weight can be calculated around 37kDa. With immunoprecipitation reaction on mouse heart samples, the IgG heavy chain, dimer of MECR is around 65kDa. Numerous studies have shown disorder of lipid metabolism is closely related with malignance, especially in liver cancer. As further research suggests that MECR has close relationship with cell proliferation, apoptosis, and metastasis (PMID: 31178528)

## Bemerkenswerte Veröffentlichungen

Verfasser	Pubmed ID	Journal	Anwendung
Remya R Nair	30266742	J Neurosci	IHC,IF
Remya R Nair	28369354	Hum Mol Genet	WB
Gali Heimer	27817865	Am J Hum Genet	WB

## Lagerung

### Lagerungsbedingungen:

Bei -20°C lagern. Nach dem Versand ein Jahr lang stabil

### Lagerungspuffer:

PBS mit 0.02% Natriumazid und 50% Glycerin pH 7.3.

Aliquotieren ist nicht notwendig bei -20°C Lagerung

**\*\*\* 20ul-Größen enthalten 0.1% BSA**

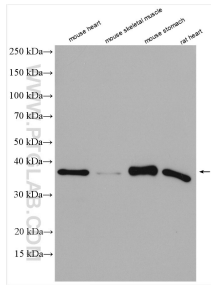
For technical support and original validation data for this product please contact:

T: 1 (888) 4PTGLAB (1-888-478-4522) (toll free in USA), or 1(312) 455-8498 (outside USA)

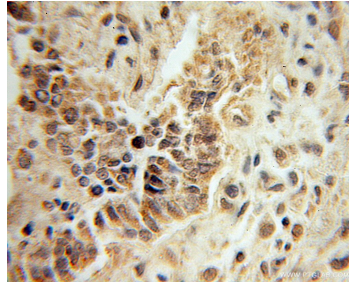
E: [proteintech@ptglab.com](mailto:proteintech@ptglab.com)  
W: [ptglab.com](http://ptglab.com)

**This product is exclusively available under Proteintech Group brand and is not available to purchase from any other manufacturer.**

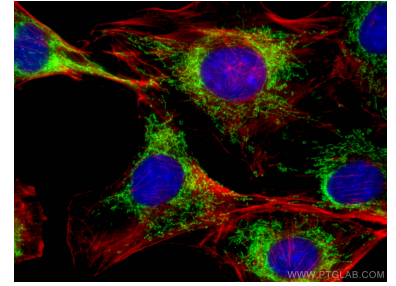
## Ausgewählte Validierungsdaten



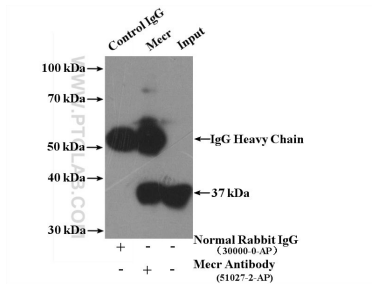
Various lysates were subjected to SDS PAGE followed by western blot with 51027-2-AP (Mecr antibody) at dilution of 1:5000 incubated at room temperature for 1.5 hours.



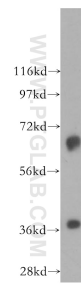
Immunohistochemical analysis of paraffin-embedded human ovary tumor using 51027-2-AP (Mecr antibody) at dilution of 1:100 (under 10x lens).



Immunofluorescent analysis of (4% PFA) fixed C2C12 cells using Mecr antibody (51027-2-AP) at dilution of 1:200 and CoraLite@488-Conjugated AffiniPure Goat Anti-Rabbit IgG(H+L), CL594-Phalloidin (red).



IP Result of anti-Mecr (IP:51027-2-AP, 4ug; Detection:51027-2-AP 1:1500) with mouse heart tissue lysate 4800ug.



mouse heart tissue were subjected to SDS PAGE followed by western blot with 51027-2-AP (Mecr antibody) at dilution of 1:3000 incubated at room temperature for 1.5 hours.