

Nur für Forschungszwecke

# CRLS1 Polyklonaler Antikörper

Katalog-Nr.: 51055-1-AP

1 Publikationen



## Allgemeine Informationen

**Katalog-Nr.:**

51055-1-AP

**Größe:**

150ul, Konzentration: 300 µg/ml durch die Bradford-Methode mit BSA als Standard;

**Wirt:**

Kaninchen

**Isotyp:**

IgG

**GenBank-Zugangsnummer:**

BC069010

**GeneID (NCBI):**

54675

**Vollständiger Name:**

cardiolipin synthase 1

**Berechnete Masse:**

301 aa, 32 kDa

**Beobachtete Masse:**

50 kDa

**Reinigungsmethode:**

Antigen-Affinitätsreinigung

**Empfohlene Verdünnungen:**

WB 1:200-1:1000

IHC 1:50-1:500

## Anwendungen

**Geprüfte Anwendungen:**

IHC, WB, ELISA

**In Publikationen genannte Anwendungen:**

WB

**Getestete Reaktivität:**

Human, Maus

**Zitierte Arten:**

Maus

**Hinweis-IHC: Antigendemaskierung mit TE-Puffer pH 9,0 empfohlen. (\*) Wahlweise kann die Antigendemaskierung auch mit Citratpuffer pH 6,0 erfolgen.**

**Positivkontrollen:**

WB: Mausherzgewebe,

IHC: humanes Herzgewebe, humanes

Mammakarzinomgewebe, Mausherzgewebe

## Hintergrundinformationen

Cardiolipin (CL) is a mitochondrial specific double negatively charged phospholipid which is intricately involved in regulating bioenergetic efficiency. In eukaryotes, CL is synthesized by cardiolipin synthase (CRLS1 or CLS1) which catalyzes the reversible phosphatidyl group transfer from one phosphatidylglycerol molecule to another to form CL and glycerol. Recently it has been reported that transgenic expression of CRLS1 accelerates cardiolipin remodeling, improves mitochondrial function, modulates mitochondrial signaling, and attenuates mitochondrial dysfunction during diabetes, thereby identifying CRLS1 as a novel therapeutic target to attenuate mitochondrial dysfunction in diabetic myocardium. The predicted molecular weight of CRLS1 is around 32-35 kDa, while a 50 kDa protein with CRLS1 activity had been observed in liver isolation, which may represent an isoform of CRLS1 (20652826).

## Bemerkenswerte Veröffentlichungen

Verfasser	Pubmed ID	Journal	Anwendung
Li Chen	35313046	Hepatology	WB

## Lagerung

**Lagerungsbedingungen:**

Bei -20°C lagern.

**Lagerungspuffer:**

PBS mit 0.02% Natriumazid und 50% Glycerin pH 7.3.

Aliquotieren ist nicht notwendig bei -20°C Lagerung

\*\*\* 20ul-Größen enthalten 0.1% BSA

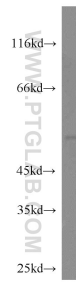
For technical support and original validation data for this product please contact:

T: 1 (888) 4PTGLAB (1-888-478-4522) (toll free in USA), or 1(312) 455-8498 (outside USA)

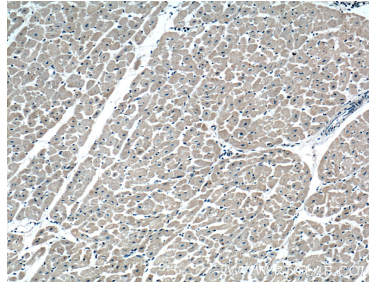
E: [proteintech@ptglab.com](mailto:proteintech@ptglab.com)  
W: [ptglab.com](http://ptglab.com)

This product is exclusively available under Proteintech Group brand and is not available to purchase from any other manufacturer.

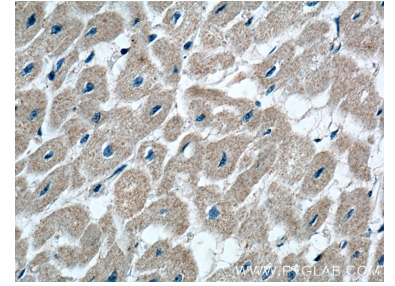
## Ausgewählte Validierungsdaten



mouse heart tissue were subjected to SDS PAGE followed by western blot with 51055-1-AP (CRLS1 antibody) at dilution of 1:300 incubated at room temperature for 1.5 hours.



Immunohistochemical analysis of paraffin-embedded human heart tissue slide using 51055-1-AP (CRLS1 Antibody) at dilution of 1:200 (under 10x lens).



Immunohistochemical analysis of paraffin-embedded human heart tissue slide using 51055-1-AP (CRLS1 Antibody) at dilution of 1:200 (under 40x lens).