

Nur für Forschungszwecke

STAT2 Polyklonaler Antikörper

Katalog-Nr.: 51075-2-AP

3 Publikationen



Allgemeine Informationen

Katalog-Nr.:

51075-2-AP

Größe:

150ul, Konzentration: 350 µg/ml von Nanodrop und 227 µg/ml durch die Bradford-Methode mit BSA als Standard;

Wirt:

Kaninchen

Isotyp:

IgG

GenBank-Zugangsnummer:

BC051284

GeneID (NCBI):

6773

Vollständiger Name:

signal transducer and activator of transcription 2, 113kDa

Berechnete Masse:

851 aa, 98 kDa

Beobachtete Masse:

100-113 kDa

Reinigungsmethode:

Antigen-Affinitätsreinigung

Empfohlene Verdünnungen:

WB 1:500-1:1000

IHC 1:20-1:200

Anwendungen

Geprüfte Anwendungen:

IHC, WB, ELISA

In Publikationen genannte Anwendungen:

WB

Getestete Reaktivität:

Human

Zitierte Arten:

Human, Maus

Positivkontrollen:

WB: MCF7 cells, Multizellen

IHC: humanes Mammakarzinomgewebe, humanes Lungenkarzinomgewebe

Hinweis-IHC: Antigendemaskierung mit TE-Puffer pH 9,0 empfohlen. (*) Wahlweise kann die Antigendemaskierung auch mit Citratpuffer pH 6,0 erfolgen.

Hintergrundinformationen

STAT2, also named as p113, belongs to the transcription factor STAT family. It is a signal transducer and activator of transcription that mediates signaling by type I IFNs (IFN-alpha and IFN-beta). Following type I IFN binding to cell surface receptors, Jak kinases (TYK2 and JAK1) are activated, leading to tyrosine phosphorylation of STAT1 and STAT2. The phosphorylated STATs dimerize and associate with ISGF3G/IRF-9 to form a complex termed ISGF3 transcription factor, that enters the nucleus. ISGF3 binds to the IFN stimulated response element (ISRE) to activate the transcription of IFN stimulated genes, which drive the cell in an antiviral state. It also interacts with CRSP2, CRSP6, Simian virus 5 protein V, rabies virus phosphoprotein, IFNAR1 and IFNAR2. Its interaction with dengue virus NS5 inhibits the phosphorylation of STAT2, and, when all viral proteins are present (polyprotein), STAT2 is targeted for degradation. This antibody is a rabbit polyclonal antibody raised against a peptide mapping within human STAT2. The calculated molecular weight of STAT2 is 98 kDa, but phosphorylated STAT2 is about 100-113 kDa.

Bemerkenswerte Veröffentlichungen

Verfasser	Pubmed ID	Journal	Anwendung
Yan-Ping Xu	31310587	J Clin Invest	
Jiangang Zheng	36572890	BMC Vet Res	WB
Chen Li	36146669	Viruses	WB

Lagerung

Lagerungsbedingungen:

Bei -20°C lagern.

Lagerungspuffer:

PBS mit 0.02% Natriumazid und 50% Glycerin pH 7.3.

Aliquotieren ist nicht notwendig bei -20°C Lagerung

*** 20ul-Größen enthalten 0.1% BSA

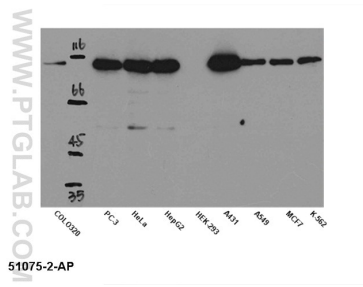
For technical support and original validation data for this product please contact:

T: 1 (888) 4PTGLAB (1-888-478-4522) (toll free in USA), or 1(312) 455-8498 (outside USA)

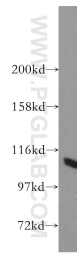
E: proteintech@ptglab.com
W: ptglab.com

This product is exclusively available under Proteintech Group brand and is not available to purchase from any other manufacturer.

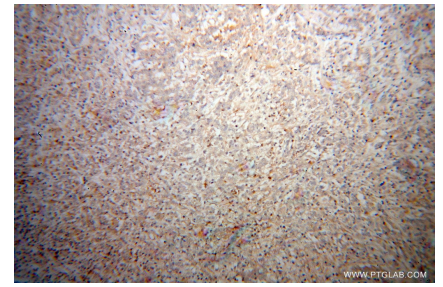
Ausgewählte Validierungsdaten



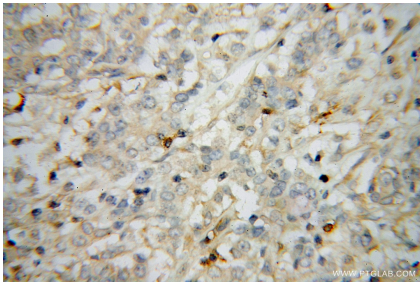
WB result of anti-STAT2 (51075-2-AP) in different cell lysates.



MCF7 cells were subjected to SDS PAGE followed by western blot with 51075-2-AP (STAT2 antibody) at dilution of 1:800 incubated at room temperature for 1.5 hours.



Immunohistochemical analysis of paraffin-embedded human breast cancer using 51075-2-AP (STAT2 antibody) at dilution of 1:50 (under 10x lens).



Immunohistochemical analysis of paraffin-embedded human breast cancer using 51075-2-AP (STAT2 antibody) at dilution of 1:50 (under 40x lens).