

Allgemeine Informationen

Katalog-Nr.: 51152-1-AP	GenBank-Zugangsnummer: NM_001690	Reinigungsmethode: Antigen-Affinitätsreinigung
Größe: 150ul , Konzentration: 350 µg/ml von Nanodrop und 280 µg/ml durch die Bradford-Methode mit BSA als Standard;	GeneID (NCBI): 523	Empfohlene Verdünnungen: WB 1:500-1:1000 IHC 1:20-1:200
Wirt: Kaninchen	Vollständiger Name: ATPase, H ⁺ transporting, lysosomal 70kDa, V1 subunit A	
Isotyp: IgG	Berechnete Masse: 68 kDa	
	Beobachtete Masse: 68 kDa	

Anwendungen

Geprüfte Anwendungen:

IHC, WB, ELISA

Getestete Reaktivität:

Human, Maus

Hinweis-IHC: Antigendemaskierung mit TE-Puffer pH 9,0 empfohlen. (*) Wahlweise kann die Antigendemaskierung auch mit Citratpuffer pH 6,0 erfolgen.

Positivkontrollen:

WB : HeLa-Zellen, HEK-293-Zellen, humanes Hirngewebe, Mausnierengewebe

IHC : humanes Hodengewebe,

Hintergrundinformationen

The vacuolar-type H(+)-ATPase (V-ATPase) is responsible for the acidification of endosomes, lysosomes, and other intracellular organelles. It is also involved in hydrogen ion transport across the plasma membrane into the extracellular space. The V-ATPase is a multisubunit complex with cytosolic and transmembrane domains. The cytosolic catalytic domain consists of 3 A subunits and 3 B subunits, which bind and hydrolyze ATP, as well as regulatory accessory subunits. ATP6V1A is V-type proton ATPase catalytic subunit A. This antibody is specific to ATP6V1A.

Lagerung

Lagerungsbedingungen:

Bei -20°C lagern. Nach dem Versand ein Jahr lang stabil

Lagerungspuffer:

PBS mit 0.02% Natriumazid und 50% Glycerin pH 7.3.

Aliquotieren ist nicht notwendig bei -20°C Lagerung

***** 20ul-Größen enthalten 0.1% BSA**

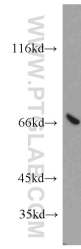
For technical support and original validation data for this product please contact:

T: 1 (888) 4PTGLAB (1-888-478-4522) (toll free in USA), or 1(312) 455-8498 (outside USA)

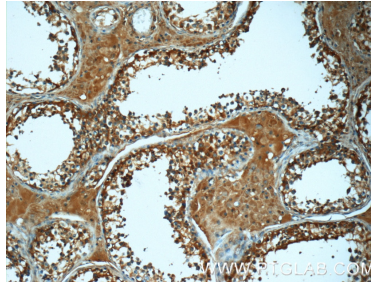
E: proteintech@ptglab.com
W: ptglab.com

This product is exclusively available under Proteintech Group brand and is not available to purchase from any other manufacturer.

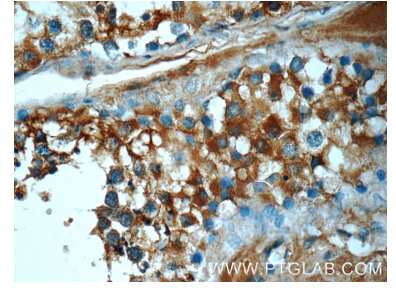
Ausgewählte Validierungsdaten



HeLa cells were subjected to SDS PAGE followed by western blot with 51152-1-AP (ATP6V1A antibody) at dilution of 1:500 incubated at room temperature for 1.5 hours.



Immunohistochemical analysis of paraffin-embedded human testis tissue slide using 51152-1-AP (ATP6V1A Antibody) at dilution of 1:50 (under 10x lens).



Immunohistochemical analysis of paraffin-embedded human testis tissue slide using 51152-1-AP (ATP6V1A Antibody) at dilution of 1:50 (under 40x lens).