

Nur für Forschungszwecke

Cyclin B1 Polyklonaler Antikörper

Katalog-Nr.:55004-1-AP

Vorgestelltes Produkt

211 Publikationen



Allgemeine Informationen

Katalog-Nr.:
55004-1-AP

Größe:
150ul, Konzentration: 347 µg/ml von
Nanodrop;

Wirt:
Kaninchen

Isotyp:
IgG

GenBank-Zugangsnummer:
NML_031966

GeneID (NCBI):
891

Vollständiger Name:
cyclin B1

Berechnete Masse:
48 kDa

Beobachtete Masse:
55-60 kDa

Reinigungsmethode:

Antigen-Affinitätsreinigung

Empfohlene Verdünnungen:

WB 1:1000-1:4000

IP 0.5-4.0 µg für IP und 1:500-1:1000
für WB

IF 1:50-1:500

Anwendungen

Geprüfte Anwendungen:

FC, IF, IP, WB, ELISA

In Publikationen genannte Anwendungen:

ColP, IF, WB

Getestete Reaktivität:

Human, Maus

Zitierte Arten:

Human, Maus, Ratte, Rind

Positivkontrollen:

WB : HeLa-Zellen, HepG2-Zellen, Jurkat-Zellen, K-562-Zellen, PC-3-Zellen

IP : HeLa-Zellen,

IF : HeLa-Zellen,

Hintergrundinformationen

Cyclin B1 is a regulatory protein involved in mitosis. The gene product complexes with p34(cdc2) to form the maturation-promoting factor (MPF). Two alternative transcripts have been found, a constitutively expressed transcript and a cell cycle-regulated transcript, that is expressed predominantly during G2/M phase of the cell cycle. The different transcripts result from the use of alternate transcription initiation sites. The antibody is specific to CCNB1. We got a 55-60 kDa band in western blotting maybe due to phosphorylation.

Bemerkenswerte Veröffentlichungen

| Verfasser | Pubmed ID | Journal | Anwendung |
|--------------|-----------|-----------------------------------|-----------|
| Zijian Zhang | 34593753 | Cell Death Dis | WB |
| Xiaoman Chen | 30207732 | Mol Pharm | WB |
| Hui-Ting Liu | 34667869 | Laryngoscope Investig Otolaryngol | WB |

Lagerung

Lagerungsbedingungen:

Bei -20°C lagern. Nach dem Versand ein Jahr lang stabil

Lagerungspuffer:

PBS mit 0.02% Natriumazid und 50% Glycerin pH 7.3.

Aliquotieren ist nicht notwendig bei -20°C Lagerung

*** 20ul-Größen enthalten 0.1% BSA

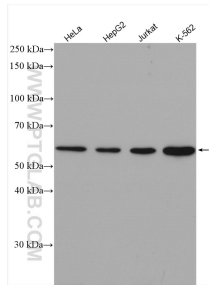
For technical support and original validation data for this product please contact:

T: 1 (888) 4PTGLAB (1-888-478-4522) (toll free
in USA), or 1(312) 455-8498 (outside USA)

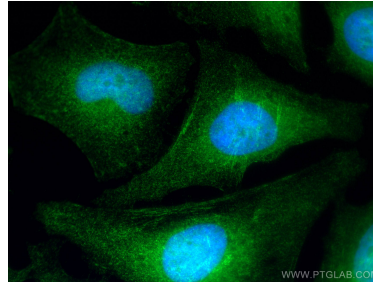
E: proteintech@ptglab.com
W: ptglab.com

This product is exclusively available under Proteintech Group brand and is not available to purchase from any other manufacturer.

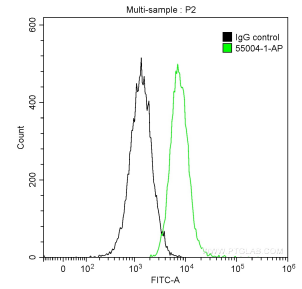
Ausgewählte Validierungsdaten



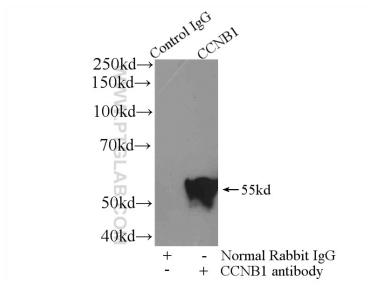
Various lysates were subjected to SDS PAGE followed by western blot with 55004-1-AP (Cyclin B1 antibody) at dilution of 1:2000 incubated at room temperature for 1.5 hours.



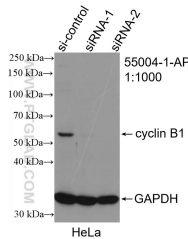
Immunofluorescent analysis of (4% PFA) fixed HeLa cells using Cyclin B1 antibody (55004-1-AP) at dilution of 1:200 and CoraLite®488-Conjugated AffiniPure Goat Anti-Rabbit IgG(H+L).



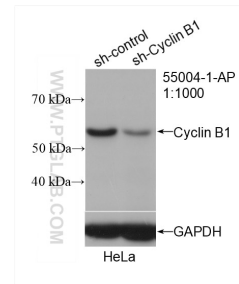
1X10⁶ Jurkat cells were intracellularly stained with 0.2 ug Anti-Human Cyclin B1 (55004-1-AP) and CoraLite®488-Conjugated AffiniPure Goat Anti-Rabbit IgG(H+L) at dilution 1:1000 (green), and 0.2 ug Control Antibody. Cells were fixed with 90% MeOH.



IP Result of anti-Cyclin B1 (IP:55004-1-AP, 4ug; Detection:55004-1-AP 1:500) with HeLa cells lysate 1200ug.



WB result of Cyclin B1 antibody (55004-1-AP; 1:1000; incubated at room temperature for 1.5 hours) with sh-Control and sh-Cyclin B1 transfected HeLa cells.



WB result of Cyclin B1 antibody (55004-1-AP; 1:1000; incubated at room temperature for 1.5 hours) with sh-Control and sh-Cyclin B1 transfected HeLa cells.