

## Allgemeine Informationen

Katalog-Nr.:  
55011-1-AP

Größe:  
150ul, Konzentration: 750 µg/ml von  
Nanodrop;

Wirt:  
Kaninchen

Isotyp:  
IgG

GenBank-Zugangsnummer:  
NM\_002775

GeneID (NCBI):  
5654

Vollständiger Name:  
HtraA serine peptidase 1

Berechnete Masse:  
51 kDa

Beobachtete Masse:  
35 kDa, 50 kDa, 42 kDa

Reinigungsmethode:

Antigen-Affinitätsreinigung

Empfohlene Verdünnungen:

WB 1:500-1:2000  
IP 0.5-4.0 µg für IP und 1:500-1:1000  
für WB  
IHC 1:100-1:400  
IF 1:10-1:100

## Anwendungen

Geprüfte Anwendungen:

IF, IHC, IP, WB, ELISA

In Publikationen genannte Anwendungen:

IF, IHC, WB

Getestete Reaktivität:

Human, Maus, Ratte

Zitierte Arten:

Human, Maus, Ratte, Zebrafisch

**Hinweis-IHC: Antigenmaskierung mit TE-Puffer pH 9,0 empfohlen. (\*) Wahlweise kann die Antigenmaskierung auch mit Citratpuffer pH 6,0 erfolgen.**

Positivkontrollen:

WB: L02-Zellen, HepG2-Zellen, Maushirngewebe

IP: L02-Zellen,

IHC: humanes Plazenta-Gewebe,

IF: HepG2-Zellen,

## Hintergrundinformationen

HTRA1, also named as HTRA, PRSS11 and L56, belongs to the peptidase S1B family. It is a protease that regulates the availability of insulin-like growth factors (IGFs) by cleaving IGF-binding proteins. HTRA1 represses signaling by TGF-beta family members. Variations in the promoter region of HTRA1 are the cause of susceptibility to age-related macular degeneration type 7 (ARMD7). Defects in HTRA1 are the cause of cerebral autosomal recessive arteriopathy with subcortical infarcts and leukoencephalopathy (CARASIL). The 50 kDa HTRA1 was found at varying levels in the majority samples tested, whereas the 42 kDa form of HTRA1 was identified in degenerated intervertebral disc protein samples (PMID:22556410). The short truncated monomer 37 kDa and dimer 74 kDa are proved (PMID:25329061). The antibody is specific to HTRA1.

## Bemerkenswerte Veröffentlichungen

Verfasser	Pubmed ID	Journal	Anwendung
Yoshihito Oura	30273602	Am J Pathol	IHC, WB
Sandeep Kumar	28941979	Am J Pathol	IHC
Hong Xiang	29163548	Front Immunol	WB, IF

## Lagerung

Lagerungsbedingungen:

Bei -20°C lagern.

Lagerungspuffer:

PBS mit 0.02% Natriumazid und 50% Glycerin pH 7.3.

Aliquotieren ist nicht notwendig bei -20°C Lagerung

**\*\*\* 20ul-Größen enthalten 0.1% BSA**

For technical support and original validation data for this product please contact:

T: 1 (888) 4PTGLAB (1-888-478-4522) (toll free in USA), or 1(312) 455-8498 (outside USA)

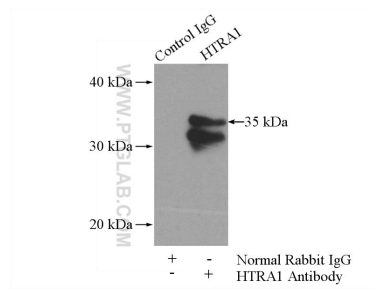
E: [proteintech@ptglab.com](mailto:proteintech@ptglab.com)  
W: [ptglab.com](http://ptglab.com)

**This product is exclusively available under Proteintech Group brand and is not available to purchase from any other manufacturer.**

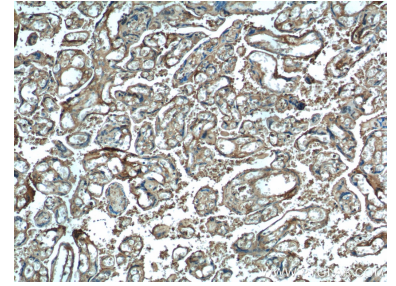
## Ausgewählte Validierungsdaten



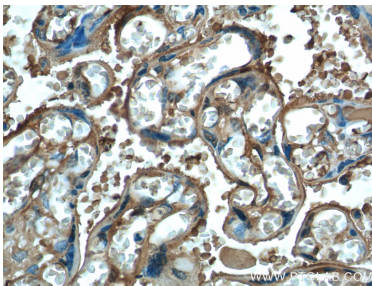
L02 cells were subjected to SDS PAGE followed by western blot with 55011-1-AP (HTRA1 antibody) at dilution of 1:600 incubated at room temperature for 1.5 hours.



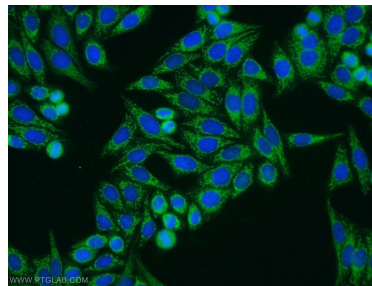
IP Result of anti-HTRA1 (IP:55011-1-AP, 4ug; Detection:55011-1-AP 1:500) with L02 cells lysate 1400ug.



Immunohistochemical analysis of paraffin-embedded human placenta tissue slide using 55011-1-AP (HTRA1 Antibody) at dilution of 1:200 (under 10x lens).



Immunohistochemical analysis of paraffin-embedded human placenta tissue slide using 55011-1-AP (HTRA1 Antibody) at dilution of 1:200 (under 40x lens).



Immunofluorescent analysis of HepG2 cells using 55011-1-AP (HTRA1 antibody) at dilution of 1:25 and Alexa Fluor 488-conjugated AffiniPure Goat Anti-Rabbit IgG(H+L).