

Nur für Forschungszwecke

Annexin A1 Polyklonaler Antikörper



Katalog-Nr.:55018-1-AP

8 Publikationen

Allgemeine Informationen

Katalog-Nr.: 55018-1-AP	GenBank-Zugangsnummer: NM_000700	Reinigungsmethode: Antigen-Affinitätsreinigung
Größe: 150ul , Konzentration: 300 µg/ml von Nanodrop und 260 µg/ml durch die Bradford-Methode mit BSA als Standard;	GeneID (NCBI): 301	Empfohlene Verdünnungen: WB 1:500-1:2000 IHC 1:20-1:200
Wirt: Kaninchen	Vollständiger Name: annexin A1	
Isotyp: IgG	Berechnete Masse: 40 kDa	
	Beobachtete Masse: 39 kDa	

Anwendungen

Geprüfte Anwendungen: FC, IHC, WB, ELISA	Positivkontrollen: WB : C2C12 cell, C6-Zellen, HeLa-Zellen, HepG2- Zellen, K-562-Zellen, NIH/3T3-Zellen
In Publikationen genannte Anwendungen: IF, IHC, WB	IHC : humanes Ösophagusgewebe, humanes Kolongewebe
Getestete Reaktivität: Human, Maus, Ratte	
Zitierte Arten: Affe, Human, Maus	
Hinweis-IHC: Antigendemaskierung mit TE- Puffer pH 9,0 empfohlen. (*) Wahlweise kann die Antigendemaskierung auch mit Citratpuffer pH 6,0 erfolgen.	

Hintergrundinformationen

ANXA1, also named as ANX1, LPC1 and p35, belongs to the annexin family. It is a member of the annexin family of Ca²⁺-binding and phospholipidbinding proteins, and it is particularly abundant in various populations of peripheral blood leukocytes. ANXA1 regulates phospholipase A2 activity. It seems to bind from two to four calcium ions with high affinity. ANXA1 is a pleiotrophic protein produced by many cell types including peripheral blood leucocytes. The antibody is specific to ANXA1.

Bemerkenswerte Veröffentlichungen

Verfasser	Pubmed ID	Journal	Anwendung
Peng Huang	27833268	Mediators Inflamm	WB,IF
Biaoxue Rong	25360220	Am J Transl Res	IHC
Rong Biaoxue	25300907	Expert Rev Mol Diagn	

Lagerung

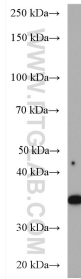
Lagerungsbedingungen:
Bei -20°C lagern.
Lagerungspuffer:
PBS mit 0.02% Natriumazid und 50% Glycerin pH 7.3.
Aliquotieren ist nicht notwendig bei -20°C Lagerung

*** 20ul-Größen enthalten 0.1% BSA

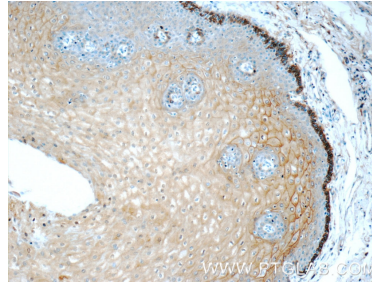
For technical support and original validation data for this product please contact:
T: 1 (888) 4PTGLAB (1-888-478-4522) (toll free in USA), or 1(312) 455-8498 (outside USA)
E: proteintech@ptglab.com
W: ptglab.com

This product is exclusively available under Proteintech Group brand and is not available to purchase from any other manufacturer.

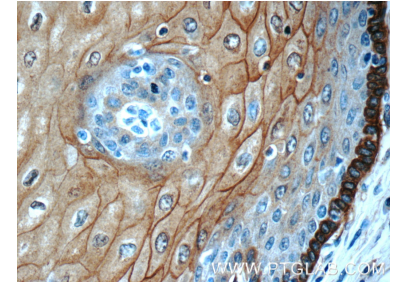
Ausgewählte Validierungsdaten



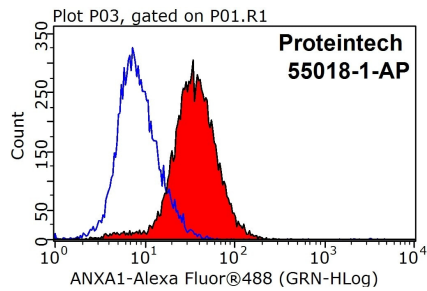
C2C12 cell were subjected to SDS PAGE followed by western blot with 55018-1-AP (Annexin A1 antibody) at dilution of 1:1000 incubated at room temperature for 1.5 hours.



Immunohistochemical analysis of paraffin-embedded human oesophagus tissue slide using 55018-1-AP (Annexin A1 antibody at dilution of 1:50 (under 10x lens).



Immunohistochemical analysis of paraffin-embedded human oesophagus tissue slide using 55018-1-AP (Annexin A1 antibody at dilution of 1:50 (under 40x lens).



1X10⁶ HeLa cells were stained with 0.2ug Annexin A1 antibody (55018-1-AP, red) and control antibody (blue). Fixed with 90% MeOH blocked with 3% BSA (30 min). Alexa Fluor 488-conjugated AffiniPure Goat Anti-Rabbit IgG(H+L) with dilution 1:1000.