

Nur für Forschungszwecke

MTCO2 Polyklonaler Antikörper

Katalog-Nr.:55070-1-AP

Vorgestelltes Produkt

90 Publikationen



Allgemeine Informationen

Katalog-Nr.:

55070-1-AP

Größe:

150ul, Konzentration: 750 µg/ml von Nanodrop;

Wirt:

Kaninchen

Isotyp:

IgG

GenBank-Zugangsnummer:

YP_003024029

GeneID (NCBI):

4513

Vollständiger Name:

cytochrome c oxidase II

Berechnete Masse:

26 kDa

Beobachtete Masse:

23-26 kDa

Reinigungsmethode:

Antigen-Affinitätsreinigung

Empfohlene Verdünnungen:

WB 1:2000-1:12000

IP 0.5-4.0 µg für IP und 1:500-1:2000 für WB

IHC 1:4000-1:16000

IF 1:50-1:500

Anwendungen

Geprüfte Anwendungen:

FC, IF, IHC, IP, WB, ELISA

In Publikationen genannte Anwendungen:

IF, IHC, IP, WB

Getestete Reaktivität:

Human, Maus, Ratte

Zitierte Arten:

Affe, Hamster, Human, Maus, Ratte, Zebrafisch

Hinweis-IHC: Antigendemaskierung mit TE-Puffer pH 9,0 empfohlen. (*) Wahlweise kann die Antigendemaskierung auch mit Citratpuffer pH 6,0 erfolgen.

Positivkontrollen:

WB : A431-Zellen, HeLa-Zellen, Mausherzgewebe, Mauslebergewebe, MCF-7-Zellen, Rattenherzgewebe

IP : HeLa-Zellen,

IHC : humanes Kolonkarzinomgewebe,

IF : HepG2-Zellen,

Hintergrundinformationen

COX2, also named as COII, COXII and MTCO2, belongs to the cytochrome c oxidase subunit 2 family. It is the component of the respiratory chain that catalyzes the reduction of oxygen to water. Subunits 1-3 form the functional core of the enzyme complex. Subunit 2 transfers the electrons from cytochrome c via its binuclear copper A center to the bimetallic center of the catalytic subunit 1. Defects in COX2 are a cause of mitochondrial complex IV deficiency (MT-C4D). The antibody is specific to COX2.

Bemerkenswerte Veröffentlichungen

Verfasser	Pubmed ID	Journal	Anwendung
Q E Xie	34571250	Mitochondrion	WB
Esther Paulo	34551310	Cell Rep	WB
Ya-Ling Yang	32961796	Int J Mol Sci	WB

Lagerung

Lagerungsbedingungen:

Bei -20°C lagern. Nach dem Versand ein Jahr lang stabil

Lagerungspuffer:

PBS mit 0.02% Natriumazid und 50% Glycerin pH 7.3.

Aliquotieren ist nicht notwendig bei -20°C Lagerung

*** 20ul-Größen enthalten 0.1% BSA

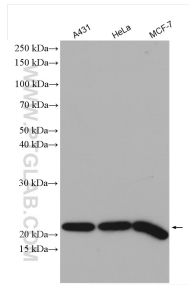
For technical support and original validation data for this product please contact:

T: 1 (888) 4PTGLAB (1-888-478-4522) (toll free in USA), or 1(312) 455-8498 (outside USA)

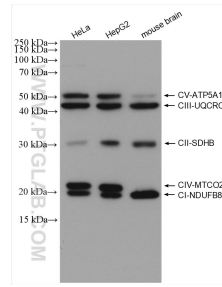
E: proteintech@ptglab.com
W: ptglab.com

This product is exclusively available under Proteintech Group brand and is not available to purchase from any other manufacturer.

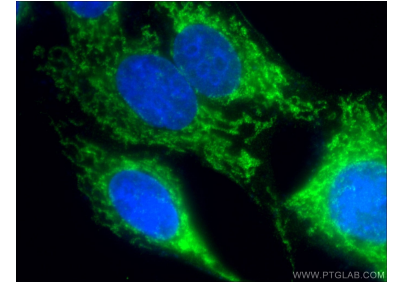
Ausgewählte Validierungsdaten



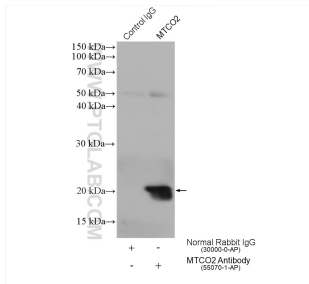
Various lysates were subjected to SDS PAGE followed by western blot with 55070-1-AP (MTCO2 antibody) at dilution of 1:6000 incubated at room temperature for 1.5 hours.



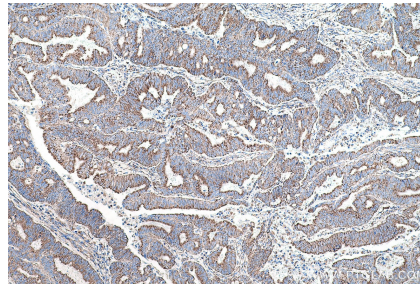
These five antibodies, ATP5A1 (14676-1-AP, 1:8000), UQCRC2 (14742-1-AP, 1:4000), SDHB (10620-1-AP, 1:8000), MTCO2 (55070-1-AP, 1:1000), NDUFB8 (14794-1-AP, 1:5000), can be assembled OXPHOS kit to detect the relative levels of the 5 OXPHOS complexes in mitochondrial preparations.



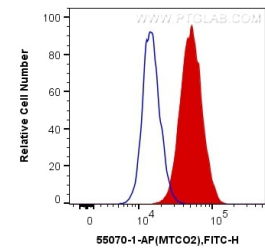
Immunofluorescent analysis of (-20°C Ethanol) fixed HepG2 cells using 55070-1-AP (MTCO2 antibody) at dilution of 1:50 and Alexa Fluor 488-conjugated AffiniPure Goat Anti-Rabbit IgG(H+L).



IP result of anti-MTCO2(IP:55070-1-AP, 4ug; Detection:55070-1-AP 1:1000) with HeLa cells lysate 1880 ug.



Immunohistochemical analysis of paraffin-embedded human colon cancer tissue slide using 55070-1-AP (MTCO2 antibody) at dilution of 1:8000 (under 10x lens). Heat mediated antigen retrieval with Tris-EDTA buffer (pH 9.0).



1×10^6 A431 cells were intracellularly stained with 0.4 ug Anti-Human MTCO2 (55070-1-AP) and CoraLite®488-Conjugated AffiniPure Goat Anti-Rabbit IgG(H+L) at dilution 1:1000 (red), or 0.4 ug Control Antibody. Cells were fixed with 4% PFA and permeabilized with Flow Cytometry Perm Buffer (PF00011-C).