

Nur für Forschungszwecke

DRD2 Polyklonaler Antikörper

Katalog-Nr.:55084-1-AP

Vorgestelltes Produkt

26 Publikationen



Allgemeine Informationen

Katalog-Nr.:
55084-1-AP

Größe:
150ul, Konzentration: 700 µg/ml von
Nanodrop;

Wirt:
Kaninchen

Isotyp:
IgG

GenBank-Zugangsnummer:
NM_016574

GeneID (NCBI):
1813

Vollständiger Name:
dopamine receptor D2

Berechnete Masse:
51 kDa

Beobachtete Masse:
50-60 kDa

Reinigungsmethode:

Antigen-Affinitätsreinigung

Empfohlene Verdünnungen:

WB 1:1000-1:8000

IP 0.5-4.0 µg für IP und 1:200-1:1000
für WB

IHC 1:300-1:1200

IF 1:50-1:500

Anwendungen

Geprüfte Anwendungen:

IF, IHC, IP, WB, ELISA

In Publikationen genannte Anwendungen:

IF, IHC

Getestete Reaktivität:

Human, Maus, Ratte

Zitierte Arten:

Human, Maus, Ratte

Hinweis-IHC: Antigendemaskierung mit TE-Puffer pH 9,0 empfohlen. (*) Wahlweise kann die Antigendemaskierung auch mit Citratpuffer pH 6,0 erfolgen.

Positivkontrollen:

WB : SH-SY5Y-Zellen, Maushirngewebe

IP : SH-SY5Y-Zellen,

IHC : Maushirngewebe, humanes Hirngewebe

IF : Maushirngewebe,

Hintergrundinformationen

DRD2, also named as D2DR and D2R, belongs to the G-protein coupled receptor 1 family. It is one of the five types (D1 to D5) of receptors for dopamine. The activity of DRD2 is mediated by G proteins which inhibit adenylyl cyclase. Defects in DRD2 are associated with dystonia type 11 (DYT11). The antibody is specific to DRD2.

Bemerkenswerte Veröffentlichungen

Verfasser	Pubmed ID	Journal	Anwendung
Subramaniam Jayanthi	36077488	Int J Mol Sci	WB
Qing Han	36288554	Endocrinology	WB
Youjun Yang	36279723	Biomed Pharmacother	IHC

Lagerung

Lagerungsbedingungen:

Bei -20°C lagern. Nach dem Versand ein Jahr lang stabil

Lagerungspuffer:

PBS mit 0.02% Natriumazid und 50% Glycerin pH 7.3.

Aliquotieren ist nicht notwendig bei -20°C Lagerung

*** 20ul-Größen enthalten 0.1% BSA

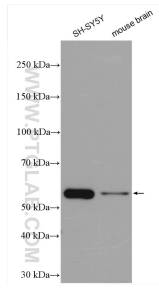
For technical support and original validation data for this product please contact:

T: 1 (888) 4PTGLAB (1-888-478-4522) (toll free
in USA), or 1(312) 455-8498 (outside USA)

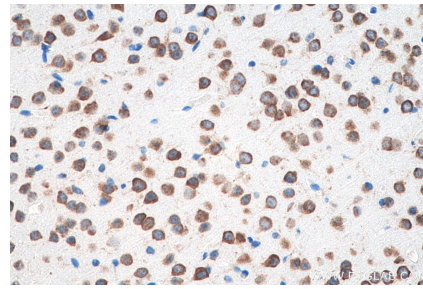
E: proteintech@ptglab.com
W: ptglab.com

This product is exclusively available under Proteintech Group brand and is not available to purchase from any other manufacturer.

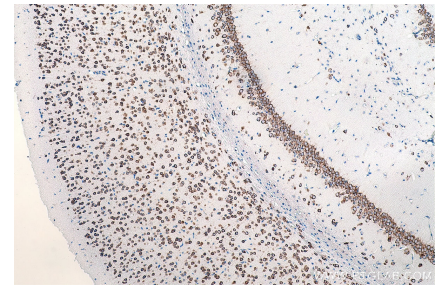
Ausgewählte Validierungsdaten



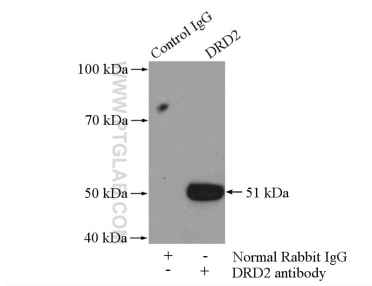
Various lysates were subjected to SDS PAGE followed by western blot with 55084-1-AP (DRD2 antibody) at dilution of 1:4000 incubated at room temperature for 1.5 hours.



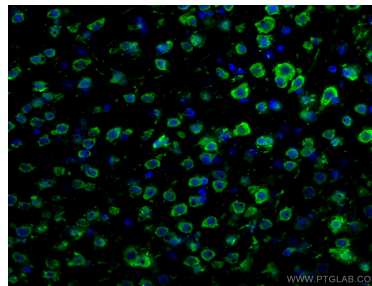
Immunohistochemical analysis of paraffin-embedded mouse brain tissue slide using 55084-1-AP (DRD2 antibody) at dilution of 1:600 (under 40x lens). Heat mediated antigen retrieval with Tris-EDTA buffer (pH 9.0).



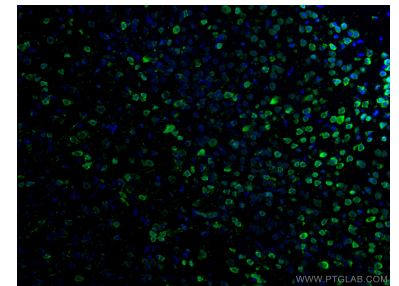
Immunohistochemical analysis of paraffin-embedded mouse brain tissue slide using 55084-1-AP (DRD2 antibody) at dilution of 1:600 (under 10x lens). Heat mediated antigen retrieval with Tris-EDTA buffer (pH 9.0).



IP Result of anti-DRD2 (IP:55084-1-AP, 4ug; Detection:55084-1-AP 1:300) with SH-SY5Y cells lysate 3000ug.



Immunofluorescent analysis of (4% PFA) fixed mouse brain tissue using DRD2 antibody (55084-1-AP) at dilution of 1:200 and CoraLite®488-Conjugated AffiniPure Goat Anti-Rabbit IgG(H+L).



Immunofluorescent analysis of (4% PFA) fixed mouse brain tissue using DRD2 antibody (55084-1-AP) at dilution of 1:200 and CoraLite®488-Conjugated AffiniPure Goat Anti-Rabbit IgG(H+L).