

Nur für Forschungszwecke

# PTCH2 Polyklonaler Antikörper

Katalog-Nr.: 55091-1-AP

3 Publikationen



## Allgemeine Informationen

<b>Katalog-Nr.:</b> 55091-1-AP	<b>GenBank-Zugangsnummer:</b> NM_003738	<b>Reinigungsmethode:</b> Antigen-Affinitätsreinigung
<b>Größe:</b> 150ul, Konzentration: 300 µg/ml von Nanodrop und 300 µg/ml durch die Bradford-Methode mit BSA als Standard;	<b>GeneID (NCBI):</b> 8643	<b>Empfohlene Verdünnungen:</b> WB 1:500-1:1000
<b>Wirt:</b> Kaninchen	<b>Vollständiger Name:</b> patched homolog 2 (Drosophila)	
<b>Isotyp:</b> IgG	<b>Berechnete Masse:</b> 131 kDa	
	<b>Beobachtete Masse:</b> 131-140 kDa	

## Anwendungen

<b>Geprüfte Anwendungen:</b> WB, ELISA	<b>Positivkontrollen:</b> WB: HepG2-Zellen, humanes Hirngewebe
<b>In Publikationen genannte Anwendungen:</b> WB	
<b>Getestete Reaktivität:</b> Human, Maus, Ratte	
<b>Zitierte Arten:</b> Human, Maus, Ratte	

## Hintergrundinformationen

PTCH1 (patched homolog 1) and PTCH2 are twelve-pass transmembrane proteins that act receptors of Hedgehog signaling pathway (PMID: 8906794; 9811851). Signals of Hedgehog family proteins (SHH, IHH and DHH in humans) are transduced through Patched family receptors (PTCH1 and PTCH2) and Smoothened (SMO) to Gli family transcription factors. Hedgehog pathway plays a critical role in embryonic development and tissue homeostasis, and its dysregulation has been implicated in many human diseases including congenital disorder and cancer (PMID: 23719536; 23532857). PTCH2 may function as a tumor suppressor in the Hedgehog signaling pathway. Alterations in PTCH2 gene have been associated with nevoid basal cell carcinoma syndrome, basal cell carcinoma, medulloblastoma, and susceptibility to congenital macrostomia. This antibody is specific to PTCH2.

## Bemerkenswerte Veröffentlichungen

Verfasser	Pubmed ID	Journal	Anwendung
Xin Chen	35028532	iScience	WB
Ya-Dong Zhang	29244790	Exp Mol Med	WB
Qiuyao Wu	37142671	Cell Res	WB

## Lagerung

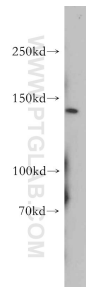
**Lagerungsbedingungen:**  
Bei -20°C lagern.  
**Lagerungspuffer:**  
PBS mit 0.02% Natriumazid und 50% Glycerin pH 7.3.  
Aliquotieren ist nicht notwendig bei -20°C Lagerung

\*\*\* 20ul-Größen enthalten 0.1% BSA

For technical support and original validation data for this product please contact:  
T: 1 (888) 4PTGLAB (1-888-478-4522) (toll free in USA), or 1(312) 455-8498 (outside USA)  
E: proteintech@ptglab.com  
W: ptglab.com

This product is exclusively available under Proteintech Group brand and is not available to purchase from any other manufacturer.

## Ausgewählte Validierungsdaten



HepG2 cells were subjected to SDS PAGE followed by western blot with 55091-1-AP (PTCH2 antibody) at dilution of 1:500 incubated at room temperature for 1.5 hours.