

Nur für Forschungszwecke

# MAGEA1 Polyklonaler Antikörper

Katalog-Nr.:55105-1-AP



## Allgemeine Informationen

<b>Katalog-Nr.:</b> 55105-1-AP	<b>GenBank-Zugangsnummer:</b> NM_004988	<b>Reinigungsmethode:</b> Antigen-Affinitätsreinigung
<b>Größe:</b> 150ul , Konzentration: 160 µg/ml von Nanodrop und 133 µg/ml durch die Bradford-Methode mit BSA als Standard;	<b>GeneID (NCBI):</b> 4100	<b>Empfohlene Verdünnungen:</b> WB 1:500-1:1000 IF 1:20-1:200
<b>Wirt:</b> Kaninchen	<b>Vollständiger Name:</b> melanoma antigen family A, 1 (directs expression of antigen MZ2-E)	
<b>Isotyp:</b> IgG	<b>Berechnete Masse:</b> 34 kDa	
	<b>Beobachtete Masse:</b> 46 kDa	

## Anwendungen

<b>Geprüfte Anwendungen:</b> IF, WB,ELISA	<b>Positivkontrollen:</b> WB : A375-Zellen, MCF-7-Zellen
<b>Getestete Reaktivität:</b> Human	<b>IF :</b> A375-Zellen,

## Hintergrundinformationen

MAGEA1, also named as CT1.1, MZ2-E, MAGE1 and MAGE1A, is the first gene reported to encode a CTL-defined human tumor antigen. It may play a role in embryonal development and tumor transformation or aspects of tumor progression. Antigen recognized on a melanoma by autologous cytolytic T-lymphocytes. MAGEA1 provided direct evidence for the power of the cDNA expression library as an effective strategy to identify genes encoding tumor antigens recognized by HLA-restricted T cells.(PMID:16951217 ) The antibody is specific to MAGEA1.

## Lagerung

**Lagerungsbedingungen:**  
Bei -20°C lagern.  
**Lagerungspuffer:**  
PBS mit 0.02% Natriumazid und 50% Glycerin pH 7.3.  
Aliquotieren ist nicht notwendig bei -20°C Lagerung

\*\*\* 20ul-Größen enthalten 0.1% BSA

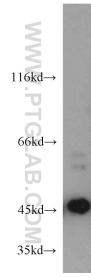
For technical support and original validation data for this product please contact:

T: 1 (888) 4PTGLAB (1-888-478-4522) (toll free  
in USA), or 1(312) 455-8498 (outside USA)

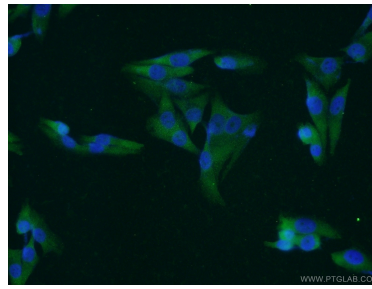
E: proteintech@ptglab.com  
W: ptglab.com

This product is exclusively available under Proteintech Group brand and is not available to purchase from any other manufacturer.

## Ausgewählte Validierungsdaten



A375 cells were subjected to SDS PAGE followed by western blot with 55105-1-AP (MAGEA1 antibody) at dilution of 1:200 incubated at room temperature for 1.5 hours.



Immunofluorescent analysis of A375 cells using 55105-1-AP (MAGEA1 antibody) at dilution of 1:50 and Alexa Fluor 488-conjugated AffiniPure Goat Anti-Rabbit IgG(H+L).