

Nur für Forschungszwecke

# NOTCH3 Polyklonaler Antikörper

Katalog-Nr.:55114-1-AP

Vorgestelltes Produkt

42 Publikationen



## Allgemeine Informationen

### Katalog-Nr.:

55114-1-AP

### Größe:

150ul , Konzentration: 600 µg/ml von Nanodrop;

### Wirt:

Kaninchen

### Isotyp:

IgG

### GenBank-Zugangsnummer:

NM\_000435

### GeneID (NCBI):

4854

### Vollständiger Name:

Notch homolog 3 (Drosophila)

### Berechnete Masse:

244 kDa

### Beobachtete Masse:

250-260 kDa, 100 kDa

### Reinigungsmethode:

Antigen-Affinitätsreinigung

### Empfohlene Verdünnungen:

WB 1:500-1:2000

IP 0.5-4.0 µg für IP und 1:500-1:1000

für WB

IHC 1:50-1:500

## Anwendungen

### Geprüfte Anwendungen:

FC, IHC, IP, WB, ELISA

### In Publikationen genannte Anwendungen:

IF, IHC, WB

### Getestete Reaktivität:

Human, Maus

### Zitierte Arten:

Human, Maus, Ratte

**Hinweis-IHC: Antigendemaskierung mit TE-Puffer pH 9,0 empfohlen. (\*) Wahlweise kann die Antigendemaskierung auch mit Citratpuffer pH 6,0 erfolgen.**

### Positivkontrollen:

WB : A2780-Zellen, Caco-2-Zellen, COLO 320-Zellen, HeLa-Zellen, K-562-Zellen, U2OS-Zellen

IP : HeLa-Zellen,

IHC : humanes Lungenkarzinomgewebe, humanes Mammakarzinomgewebe, humanes Nierengewebe

## Hintergrundinformationen

NOTCH3 belongs to the NOTCH family. It functions as a receptor for membrane-bound ligands Jagged1, Jagged2 and Delta1 to regulate cell-fate determination. Upon ligand activation through the released notch intracellular domain (NICD) it forms a transcriptional activator complex with RBP-J kappa and activates genes of the enhancer of split locus. NOTCH3 affects the implementation of differentiation, proliferation and apoptotic programs. Defects in NOTCH3 are the cause of cerebral autosomal dominant arteriopathy with subcortical infarcts and leukoencephalopathy (CADASIL). The antibody is specific to NOTCH3. Notch3 is a single-pass type I membrane protein exposed at the cell surface as a heterodimer of 2321 amino acids. It is synthesized as a precursor with a molecular weight of ~280 kDa (Notch3 full-length), which is cleaved (S1 cleavage) into a 210 kDa extracellular fragment and a 97 kDa intracellular fragment (PMID: 21702048).

## Bemerkenswerte Veröffentlichungen

Verfasser	Pubmed ID	Journal	Anwendung
Wen-Cheng Chung	28938159	Neoplasia	WB,IHC
Xianyun Xu	36158688	Front Oncol	WB
Wen-Cheng Chung	29142904	Oncoscience	IHC

## Lagerung

### Lagerungsbedingungen:

Bei -20°C lagern. Nach dem Versand ein Jahr lang stabil

### Lagerungspuffer:

PBS mit 0.02% Natriumazid und 50% Glycerin pH 7.3.

Aliquotieren ist nicht notwendig bei -20°C Lagerung

\*\*\* 20ul-Größen enthalten 0.1% BSA

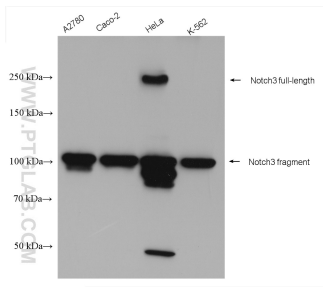
For technical support and original validation data for this product please contact:

T: 1 (888) 4PTGLAB (1-888-478-4522) (toll free in USA), or 1(312) 455-8498 (outside USA)

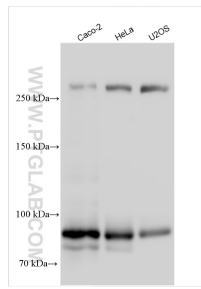
E: proteintech@ptglab.com  
W: ptglab.com

This product is exclusively available under Proteintech Group brand and is not available to purchase from any other manufacturer.

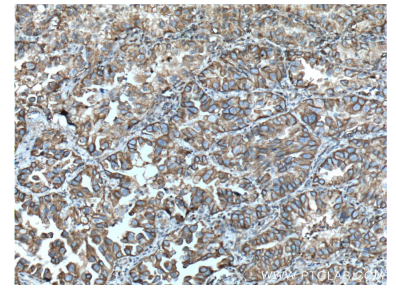
## Ausgewählte Validierungsdaten



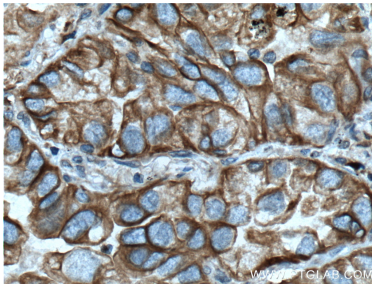
Various lysates were subjected to SDS PAGE followed by western blot with 55114-1-AP (NOTCH3 antibody) at dilution of 1:1000 incubated at room temperature for 1.5 hours.



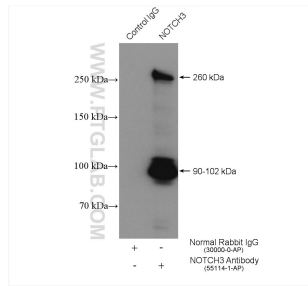
Various lysates were subjected to SDS PAGE followed by western blot with 55114-1-AP (NOTCH3 antibody) at dilution of 1:1000 incubated at room temperature for 1.5 hours.



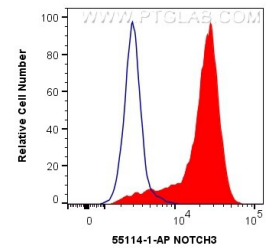
Immunohistochemical analysis of paraffin-embedded human lung cancer tissue slide using 55114-1-AP (NOTCH3 Antibody) at dilution of 1:200 (under 10x lens). Heat mediated antigen retrieval with Tris-EDTA buffer (pH 9.0).



Immunohistochemical analysis of paraffin-embedded human lung cancer tissue slide using 55114-1-AP (NOTCH3 Antibody) at dilution of 1:200 (under 40x lens). Heat mediated antigen retrieval with Tris-EDTA buffer (pH 9.0).



IP result of anti-NOTCH3(IP:55114-1-AP, 4ug; Detection:55114-1-AP 1:500) with HeLa cells lysate 2400 ug.



$1 \times 10^6$  Jurkat cells were intracellularly stained with 0.4 ug Anti-Human NOTCH3 (55114-1-AP) and CoraLite@488-Conjugated AffiniPure Goat Anti-Rabbit IgG(H+L) at dilution 1:1000 (red), or 0.4 ug Control Antibody. Cells were fixed with 4% PFA and permeabilized with Flow Cytometry Perm Buffer (PF00011-C).