

## Allgemeine Informationen

**Katalog-Nr.:**

55117-1-AP

**Größe:**

150ul , Konzentration: 450 µg/ml von Nanodrop und 293 µg/ml durch die Bradford-Methode mit BSA als Standard;

**Wirt:**

Kaninchen

**Isotyp:**

IgG

**GenBank-Zugangsnummer:**

NM\_001964

**GeneID (NCBI):**

1958

**Vollständiger Name:**

early growth response 1

**Berechnete Masse:**

58 kDa

**Beobachtete Masse:**

70-80 kDa

**Reinigungsmethode:**

Antigen-Affinitätsreinigung

**Empfohlene Verdünnungen:**

WB 1:500-1:1000

IHC 1:50-1:500

## Anwendungen

**Geprüfte Anwendungen:**

IHC, WB, ELISA

**In Publikationen genannte Anwendungen:**

IF, IHC, WB

**Getestete Reaktivität:**

Human, Maus

**Zitierte Arten:**

Human, Maus

**Hinweis-IHC: Antigendemaskierung mit TE-Puffer pH 9,0 empfohlen. (\*) Wahlweise kann die Antigendemaskierung auch mit Citratpuffer pH 6,0 erfolgen.**

**Positivkontrollen:**

WB : A549-Zellen, MCF-7-Zellen, PC-3-Zellen

IHC : humanes Plazenta-Gewebe, humanes Zervixkarzinomgewebe

## Hintergrundinformationen

Early growth response 1 (EGR1) is a member of EGR family which are transcriptional factors that contain three repetitive zinc finger DNA binding domains which bind to EGR response elements (ER) to regulate target gene expression. The expression of EGR family members is induced by growth factors, with EGR1 expression being induced by NGF. Increased EGR1 expression activates transcription of other signaling molecules, including CDK5 and tyrosine hydroxylase, and exerts long term effects on neural cell growth and differentiation. Egr-1 binds to the DNA sequence 5'-CGCCCCGC-3' (Egr-site), thereby activating transcription of target genes whose products are required for mitogenesis and differentiation. Western blotting of nuclear and cytoplasmic fractions of CNS tissue verified the cytoplasmic Egr1 as 110-kDa dimer or after denaturation as a 57-kDa version, which is reflecting its theoretical molecular weight of 57 kDa. In the nucleus Egr1 is found as 75-kDa homo- or heterodimer and as 35-kDa variant under strong denaturation.

## Bemerkenswerte Veröffentlichungen

Verfasser	Pubmed ID	Journal	Anwendung
Shuyue Sheng	34608568	In Vitro Cell Dev Biol Anim	WB
Yan-Lin Yang	30462533	Am J Physiol Cell Physiol	WB
Yin Wang	32444791	Nat Commun	IF

## Lagerung

**Lagerungsbedingungen:**

Bei -20°C lagern. Nach dem Versand ein Jahr lang stabil

**Lagerungspuffer:**

PBS mit 0.02% Natriumazid und 50% Glycerin pH 7.3.

Aliquotieren ist nicht notwendig bei -20°C Lagerung

**\*\*\* 20ul-Größen enthalten 0.1% BSA**

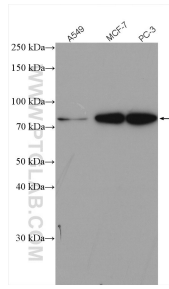
For technical support and original validation data for this product please contact:

T: 1 (888) 4PTGLAB (1-888-478-4522) (toll free in USA), or 1(312) 455-8498 (outside USA)

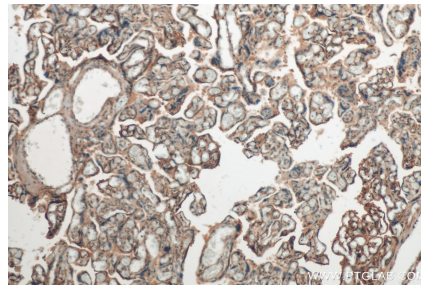
E: [proteintech@ptglab.com](mailto:proteintech@ptglab.com)  
 W: [ptglab.com](http://ptglab.com)

**This product is exclusively available under Proteintech Group brand and is not available to purchase from any other manufacturer.**

## Ausgewählte Validierungsdaten



Various lysates were subjected to SDS PAGE followed by western blot with 55117-1-AP (EGR1 antibody) at dilution of 1:800 incubated at room temperature for 1.5 hours.



Immunohistochemical analysis of paraffin-embedded human placenta tissue slide using 55117-1-AP (EGR1 antibody) at dilution of 1:200 (under 10x lens). Heat mediated antigen retrieval with Tris-EDTA buffer (pH 9.0).