

## Allgemeine Informationen

## Katalog-Nr.:

55129-1-AP

## Größe:

150ul , Konzentration: 293 µg/ml durch die Bradford-Methode mit BSA als Standard;

## Wirt:

Kaninchen

## Isotyp:

IgG

## GenBank-Zugangsnummer:

NM\_032595

## GeneID (NCBI):

84687

## Vollständiger Name:

protein phosphatase 1, regulatory (inhibitor) subunit 9B

## Berechnete Masse:

89 kDa

## Beobachtete Masse:

120-130 kDa

## Reinigungsmethode:

Antigen-Affinitätsreinigung

## Empfohlene Verdünnungen:

WB 1:1000-1:8000

IP 0.5-4.0 µg für IP und 1:200-1:1000

für WB

IHC 1:20-1:200

## Anwendungen

## Geprüfte Anwendungen:

IHC, IP, WB, ELISA

## In Publikationen genannte Anwendungen:

WB

## Getestete Reaktivität:

Human, Maus

## Zitierte Arten:

Maus

**Hinweis-IHC: Antigendemaskierung mit TE-Puffer pH 9,0 empfohlen. (\*) Wahlweise kann die Antigendemaskierung auch mit Citratpuffer pH 6,0 erfolgen.**

## Positivkontrollen:

WB : Maushirngewebe, A549-Zellen

IP : Maushirngewebe,

IHC : humanes Hirngewebe,

## Hintergrundinformationen

Neurabin 2, also named as Spinophilin, seems to act as a scaffold protein in multiple signaling pathways. It modulates excitatory synaptic transmission and dendritic spine morphology. PPP1R9B binds to actin filaments (F-actin) and shows cross-linking activity. It may play an important role in linking the actin cytoskeleton to the plasma membrane at the synaptic junction. PPP1R9B plays a role in regulation of G-protein coupled receptor signaling, including D2Rs and alpha-adrenergic receptors. PPP1R9B probably regulates p70 S6 kinase activity by forming a complex with TIAM. The antibody is specific to PPP1R9B. The predicted molecular weight of spinophilin is 89 kDa, which differs significantly from the apparent MW seen in SDS/PAGE. Both the expressed full-length cDNA and the endogenous protein run at 120-130 kDa. This may be due to an extended conformation and/or low SDS binding capacity. (PMID: 28941770, PMID: 9275233).

## Bemerkenswerte Veröffentlichungen

Verfasser	Pubmed ID	Journal	Anwendung
Min Wu	35224156	Genes Dis	WB
Chong Wang	24820113	Toxicology	WB

## Lagerung

## Lagerungsbedingungen:

Bei -20°C lagern. Nach dem Versand ein Jahr lang stabil

## Lagerungspuffer:

0,1 M NaHCO<sub>3</sub>, 0,1M Glyzin, 0,02% Natriumazid und 50% Glycerin, pH 7,3.

Aliquotieren ist nicht notwendig bei -20°C Lagerung

\*\*\* 20ul-Größen enthalten 0.1% BSA

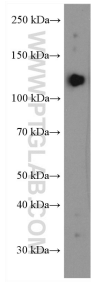
For technical support and original validation data for this product please contact:

T: 1 (888) 4PTGLAB (1-888-478-4522) (toll free in USA), or 1(312) 455-8498 (outside USA)

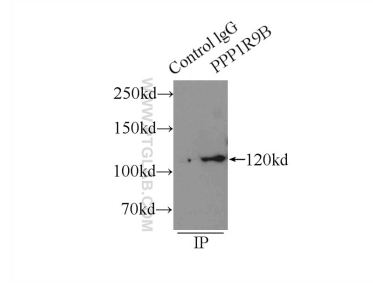
E: [proteintech@ptglab.com](mailto:proteintech@ptglab.com)  
 W: [ptglab.com](http://ptglab.com)

This product is exclusively available under Proteintech Group brand and is not available to purchase from any other manufacturer.

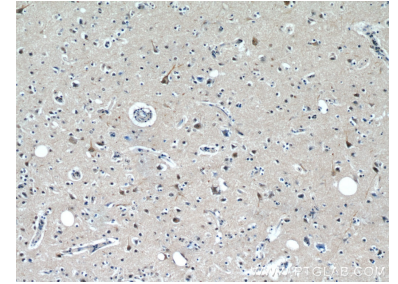
## Ausgewählte Validierungsdaten



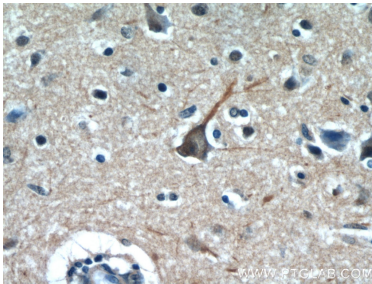
mouse brain tissue were subjected to SDS PAGE followed by western blot with 55129-1-AP (Neurabin 2 antibody) at dilution of 1:4000 incubated at room temperature for 1.5 hours.



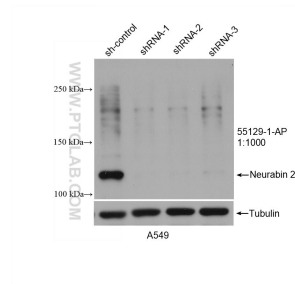
IP Result of anti-Neurabin 2 (IP:55129-1-AP, 4ug; Detection:55129-1-AP 1:300) with mouse brain tissue lysate 6000ug.



Immunohistochemical analysis of paraffin-embedded human brain using 55129-1-AP (Neurabin 2 antibody) at dilution of 1:50 (under 10x lens).



Immunohistochemical analysis of paraffin-embedded human brain using 55129-1-AP (Neurabin 2 antibody) at dilution of 1:50 (under 40x lens).



WB result of PPP1R9B antibody (55129-1-AP; 1:1000; incubated at room temperature for 1.5 hours) with sh-Control and sh-Neurabin 2 transfected A549 cells.