

Allgemeine Informationen

Katalog-Nr.: 55132-1-AP	GenBank-Zugangsnummer: NM_001243	Reinigungsmethode: Antigen-Affinitätsreinigung
Größe: 150ul , Konzentration: 200 µg/ml von Nanodrop und 133 µg/ml durch die Bradford-Methode mit BSA als Standard;	GeneID (NCBI): 943	Empfohlene Verdünnungen: IHC 1:500-1:2000 IF 1:50-1:500
Wirt: Kaninchen	Vollständiger Name: tumor necrosis factor receptor superfamily, member 8	
Isotyp: IgG	Berechnete Masse: 64 kDa	

Anwendungen

Geprüfte Anwendungen: IF, IHC, ELISA	Positivkontrollen:
Getestete Reaktivität: Human	IHC : humanes Lymphomgewebe, humanes Tonsillitissgewebe
Hinweis-IHC: Antigenmaskierung mit TE- Puffer pH 9,0 empfohlen. (*) Wahlweise kann die Antigenmaskierung auch mit Citratpuffer pH 6,0 erfolgen.	IF : humanes Lymphomgewebe,

Hintergrundinformationen

CD30 is a transmembrane glycoprotein belonging to the tumor necrosis factor receptor superfamily. CD30 expression is found on activated T and B cells. CD30 is useful in diagnosis of classic Hodgkin's lymphoma, anaplastic large cell lymphoma and embryonal carcinoma.

Lagerung

Lagerungsbedingungen:
Bei -20°C lagern. Nach dem Versand ein Jahr lang stabil

Lagerungspuffer:
0,1 M NaHCO₃, 0,1M Glyzin, 0,02% Natriumazid und 50% Glycerin, pH 7,3.

Aliquotieren ist nicht notwendig bei -20°C Lagerung

***** 20ul-Größen enthalten 0.1% BSA**

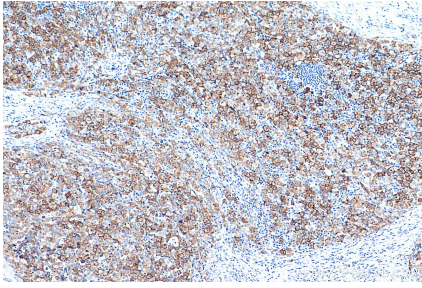
For technical support and original validation data for this product please contact:

T: 1 (888) 4PTGLAB (1-888-478-4522) (toll free
in USA), or 1(312) 455-8498 (outside USA)

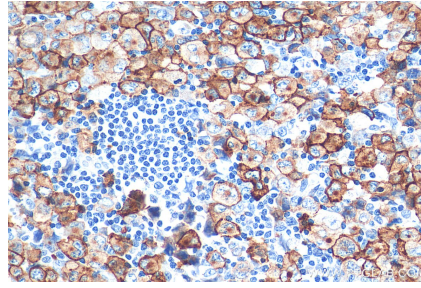
E: proteintech@ptglab.com
W: ptglab.com

This product is exclusively available under Proteintech Group brand and is not available to purchase from any other manufacturer.

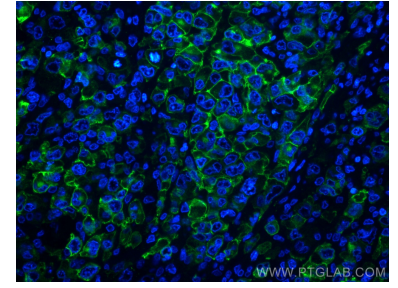
Ausgewählte Validierungsdaten



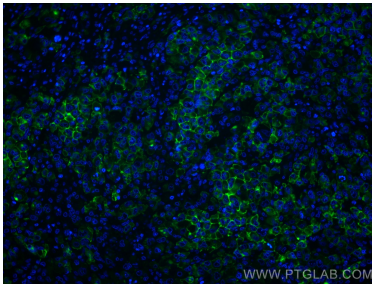
Immunohistochemical analysis of paraffin-embedded human T-cell anaplastic large cell lymphoma (ALCL) tissue slide using 55132-1-AP (CD30 antibody) at dilution of 1:1000 (under 10x lens). Heat mediated antigen retrieval with Tris-EDTA buffer (pH 9.0).



Immunohistochemical analysis of paraffin-embedded human T-cell anaplastic large cell lymphoma (ALCL) tissue slide using 55132-1-AP (CD30 antibody) at dilution of 1:1000 (under 40x lens). Heat mediated antigen retrieval with Tris-EDTA buffer (pH 9.0).



Immunofluorescent analysis of (4% PFA) fixed human T-cell anaplastic large cell lymphoma (ALCL) tissue using CD30 antibody (55132-1-AP) at dilution of 1:200 and CoraLite@488-Conjugated AffiniPure Goat Anti-Rabbit IgG(H+L).



Immunofluorescent analysis of (4% PFA) fixed human T-cell anaplastic large cell lymphoma (ALCL) tissue using CD30 antibody (55132-1-AP) at dilution of 1:200 and CoraLite@488-Conjugated AffiniPure Goat Anti-Rabbit IgG(H+L).