

Nur für Forschungszwecke

# smooth muscle actin specific Polyklonaler Antikörper



Katalog-Nr.:55135-1-AP

207 Publikationen

## Allgemeine Informationen

<b>Katalog-Nr.:</b> 55135-1-AP	<b>GenBank-Zugangsnummer:</b> NM_001613	<b>Reinigungsmethode:</b> Antigen-Affinitätsreinigung
<b>Größe:</b> 150ul , Konzentration: 600 µg/ml von Nanodrop;	<b>GeneID (NCBI):</b> 59	<b>Empfohlene Verdünnungen:</b> WB 1:500-1:4000
<b>Wirt:</b> Kaninchen	<b>Vollständiger Name:</b> actin, alpha 2, smooth muscle, aorta	IHC 1:20-1:200 IF 1:50-1:500
<b>Isotyp:</b> IgG	<b>Berechnete Masse:</b> 42 kDa	
	<b>Beobachtete Masse:</b> 42 kDa	

## Anwendungen

### Geprüfte Anwendungen:

IF, IHC, WB, ELISA

### In Publikationen genannte Anwendungen:

IF, IHC, WB

### Getestete Reaktivität:

Human, Maus, Ratte

### Zitierte Arten:

Human, Kaninchen, Maus, Ratte

**Hinweis-IHC: Antigendemaskierung mit TE-Puffer pH 9,0 empfohlen. (\*) Wahlweise kann die Antigendemaskierung auch mit Citratpuffer pH 6,0 erfolgen.**

### Positivkontrollen:

WB : Maus-Kolongewebe, Mausnierengewebe

IHC : humanes Herzgewebe, humanes Kolongewebe, humanes Kolonkarzinomgewebe, humanes Leberkarzinomgewebe, humanes Leberzirrhosegewebe, Maus-Kolongewebe, Mauslebergewebe, Ratten-Kolongewebe

IF : Mausherzgewebe,

## Hintergrundinformationen

ACTA2, also named as a-SMA,AAT6;ACTSA belongs to the actin family. Actins are highly conserved proteins that are involved in various types of cell motility and are ubiquitously expressed in all eukaryotic cells. Defects in ACTA2 are the cause of aortic aneurysm familial thoracic type 6 (AAT6). The immunogen of this antibody is a specific domain of ACTA2. This antibody stains the aorta only.

## Bemerkenswerte Veröffentlichungen

Verfasser	Pubmed ID	Journal	Anwendung
Yuan Gao	33173749	Adv Sci (Weinh)	IF
Wei Wang	32976932	Cell Signal	IF
H-J Wang	32959695	Hum Exp Toxicol	WB

## Lagerung

### Lagerungsbedingungen:

Bei -20°C lagern.

### Lagerungspuffer:

PBS mit 0.02% Natriumazid und 50% Glycerin pH 7.3.

Aliquotieren ist nicht notwendig bei -20°C Lagerung

\*\*\* 20ul-Größen enthalten 0.1% BSA

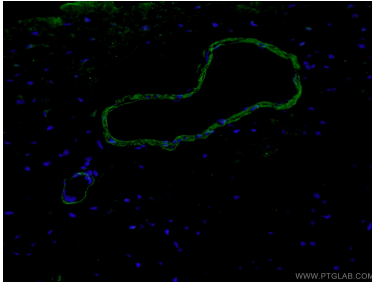
For technical support and original validation data for this product please contact:

T: 1 (888) 4PTGLAB (1-888-478-4522) (toll free in USA), or 1(312) 455-8498 (outside USA)

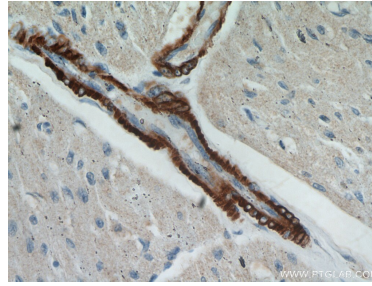
E: proteintech@ptglab.com  
W: ptglab.com

This product is exclusively available under Proteintech Group brand and is not available to purchase from any other manufacturer.

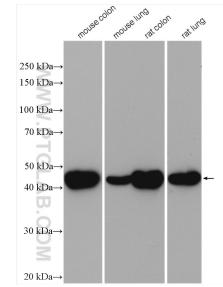
## Ausgewählte Validierungsdaten



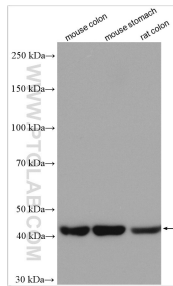
Immunofluorescent analysis of (4% PFA) fixed mouse heart tissue using 55135-1-AP (Alpha SMA-specific antibody) at dilution of 1:200 and Alexa Fluor 488-Conjugated AffiniPure Goat Anti-Rabbit IgG(H+L).



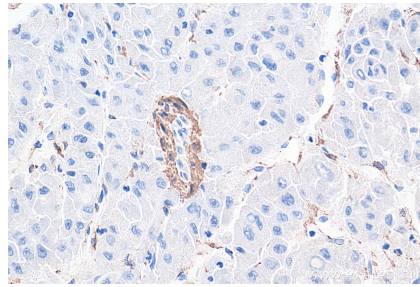
Immunohistochemical analysis of paraffin-embedded human heart using 55135-1-AP (ACTA2-Specific antibody) at dilution of 1:100 (under 40x lens).



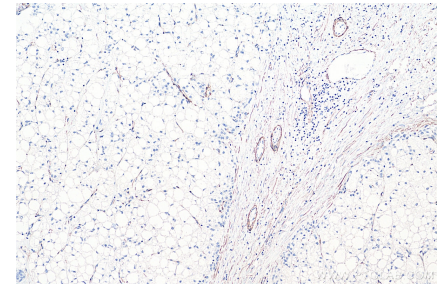
Various lysates were subjected to SDS PAGE followed by western blot with 55135-1-AP (smooth muscle actin-specific antibody) at dilution of 1:2000 incubated at room temperature for 1.5 hours.



Various lysates were subjected to SDS PAGE followed by western blot with 55135-1-AP (smooth muscle actin specific antibody) at dilution of 1:5000 incubated at room temperature for 1.5 hours.



Immunohistochemical analysis of paraffin-embedded human liver cancer tissue slide using 55135-1-AP (smooth muscle actin specific antibody) at dilution of 1:1000 (under 40x lens). Heat mediated antigen retrieval with Tris-EDTA buffer (pH 9.0).



Immunohistochemical analysis of paraffin-embedded human liver cancer tissue slide using 55135-1-AP (smooth muscle actin specific antibody) at dilution of 1:1000 (under 10x lens). Heat mediated antigen retrieval with Tris-EDTA buffer (pH 9.0).