

## Allgemeine Informationen

|   |  |  |
|---|--|--|
| <b>Katalog-Nr.:</b><br>55156-1-AP   | <b>GenBank-Zugangsnummer:</b><br>NM_000379           | <b>Reinigungsmethode:</b><br>Antigen-Affinitätsreinigung             |
| <b>Größe:</b><br>150ul , Konzentration: 700 µg/ml von Nanodrop und 387 µg/ml durch die Bradford-Methode mit BSA als Standard; | <b>GeneID (NCBI):</b><br>7498                        | <b>Empfohlene Verdünnungen:</b><br>WB 1:500-1:2000<br>IHC 1:50-1:500 |
| <b>Wirt:</b><br>Kaninchen   | <b>Vollständiger Name:</b><br>xanthine dehydrogenase |  |
| <b>Isotyp:</b><br>IgG   | <b>Berechnete Masse:</b><br>146 kDa                  |  |
|   | <b>Beobachtete Masse:</b><br>147-150 kDa             |  |

## Anwendungen

|   |   |
|---|---|
| <b>Geprüfte Anwendungen:</b><br>IHC, WB, ELISA  | <b>Positivkontrollen:</b><br>WB : Mauslebergewebe, Rattenlebergewebe<br>IHC : humanes Herzgewebe, |
| <b>In Publikationen genannte Anwendungen:</b><br>WB   |   |
| <b>Getestete Reaktivität:</b><br>Human, Maus, Ratte   |   |
| <b>Zitierte Arten:</b><br>Human, Maus, Ratte, Rind  |   |
| <b>Hinweis-IHC: Antigendemaskierung mit TE-Puffer pH 9,0 empfohlen. (*) Wahlweise kann die Antigendemaskierung auch mit Citratpuffer pH 6,0 erfolgen.</b> |   |

## Hintergrundinformationen

XDH, also named as XDHA, XO and XD, belongs to the xanthine dehydrogenase family. It catalyzes the last two steps of purine catabolism in man, formation of the end product uric acid from hypoxanthine and xanthine. The mammalian enzyme is synthesized as a dehydrogenase (XDH), which uses NAD as the electron acceptor, but it can be converted into an oxidase (XO) both in vivo and in vitro. This gene encodes a protein of 150 kDa and the 150 kDa polypeptide can be processed into a fragment of 130 kDa and further to 85 kDa by spontaneous proteolytic cleavage (PMID:9989587). In addition, the full length polypeptide can be also partially processed into a 87 kDa and 59 kDa fragments (PMID:21528298). It also can exist as a homodimer (PMID:9989587). This antibody is specific to XDH.

## Bemerkenswerte Veröffentlichungen

| Verfasser    | Pubmed ID | Journal       | Anwendung |
|--------------|-----------|---------------|-----------|
| Qi Xue Huang | 36175227  | J Dairy Sci   | WB        |
| Yiming Wang  | 33080936  | Int J Mol Sci | WB        |
| Lihua Zhang  | 36374311  | Food Funct    | WB        |

## Lagerung

**Lagerungsbedingungen:**  
Bei -20°C lagern. Nach dem Versand ein Jahr lang stabil

**Lagerungspuffer:**  
PBS mit 0.02% Natriumazid und 50% Glycerin pH 7.3.

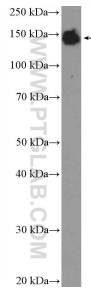
Aliquotieren ist nicht notwendig bei -20°C Lagerung

\*\*\* 20ul-Größen enthalten 0.1% BSA

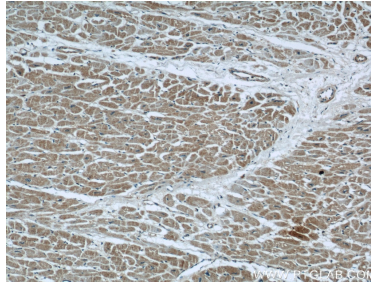
For technical support and original validation data for this product please contact:  
 T: 1 (888) 4PTGLAB (1-888-478-4522) (toll free in USA), or 1(312) 455-8498 (outside USA)  
 E: [proteintech@ptglab.com](mailto:proteintech@ptglab.com)  
 W: [ptglab.com](http://ptglab.com)

This product is exclusively available under Proteintech Group brand and is not available to purchase from any other manufacturer.

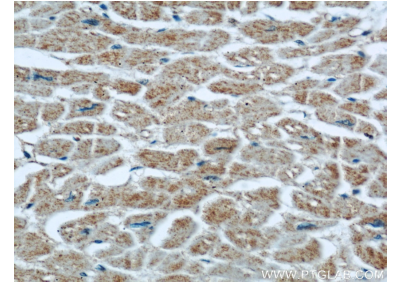
## Ausgewählte Validierungsdaten



mouse liver tissue were subjected to SDS PAGE followed by western blot with 55156-1-AP (XDH Antibody) at dilution of 1:1000 incubated at room temperature for 1.5 hours.



Immunohistochemical analysis of paraffin-embedded human heart using 55156-1-AP (XDH antibody) at dilution of 1:100 (under 10x lens).



Immunohistochemical analysis of paraffin-embedded human heart using 55156-1-AP (XDH antibody) at dilution of 1:100 (under 40x lens).