

Nur für Forschungszwecke

ATP1A1-Specific Polyklonaler Antikörper



Katalog-Nr.: 55187-1-AP

Vorgestelltes Produkt

12 Publikationen

Allgemeine Informationen

Katalog-Nr.: 55187-1-AP	GenBank-Zugangsnummer: NM_000701	Reinigungsmethode: Antigen-Affinitätsreinigung
Größe: 150ul, Konzentration: 600 µg/ml von Nanodrop;	GeneID (NCBI): 476	Empfohlene Verdünnungen: WB 1:1000-1:8000 IHC 1:50-1:500 IF 1:50-1:500
Wirt: Kaninchen	Vollständiger Name: ATPase, Na ⁺ /K ⁺ transporting, alpha 1 polypeptide	
Isotyp: IgG	Berechnete Masse: 113 kDa	
	Beobachtete Masse: 100-110 kDa	

Anwendungen

Geprüfte Anwendungen:

FC, IF, IHC, WB, ELISA

In Publikationen genannte Anwendungen:

IF, WB

Getestete Reaktivität:

Human, Maus

Zitierte Arten:

Human, Maus, Ratte

Hinweis-IHC: Antigenmaskierung mit TE-Puffer pH 9,0 empfohlen. (*) Wahlweise kann die Antigenmaskierung auch mit Citratpuffer pH 6,0 erfolgen.

Positivkontrollen:

WB: HEK-293-Zellen, HepG2-Zellen, Mausherzgewebe, MCF-7-Zellen, Neuro-2a-Zellen

IHC: humanes Leberkarzinomgewebe, humanes Nierengewebe, Mausenierengewebe

IF: Caco-2-Zellen, HEK-293-Zellen

Hintergrundinformationen

ATP1A1 is the catalytic component of Na⁺/K⁺-ATPase which is a membrane bound enzyme primarily involved in generation of Na⁺ and K⁺ gradients across plasma membranes and in determination of cytoplasmic Na⁺ levels. ATP1A1 is a ubiquitously expressed membrane protein and often used as the marker or internal control for plasma membrane protein. This antibody is specific to ATP1A1.

Bemerkenswerte Veröffentlichungen

Verfasser	Pubmed ID	Journal	Anwendung
Jun Lin	34514733	Adv Sci (Weinh)	WB
Yan Xu	27857155	Sci Rep	IF
Yuetao Wen	35609730	Neurosci Res	WB

Lagerung

Lagerungsbedingungen:

Bei -20°C lagern. Nach dem Versand ein Jahr lang stabil

Lagerungspuffer:

PBS mit 0.02% Natriumazid und 50% Glycerin pH 7.3.

Aliquotieren ist nicht notwendig bei -20°C Lagerung

*** 20ul-Größen enthalten 0.1% BSA

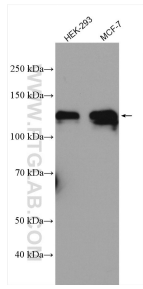
For technical support and original validation data for this product please contact:

T: 1 (888) 4PTGLAB (1-888-478-4522) (toll free in USA), or 1(312) 455-8498 (outside USA)

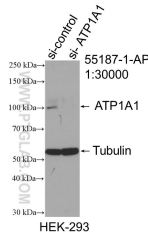
E: proteintech@ptglab.com
W: ptglab.com

This product is exclusively available under Proteintech Group brand and is not available to purchase from any other manufacturer.

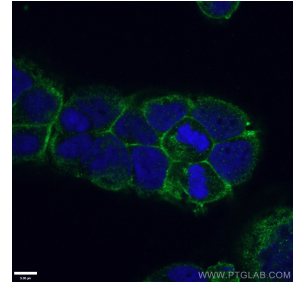
Ausgewählte Validierungsdaten



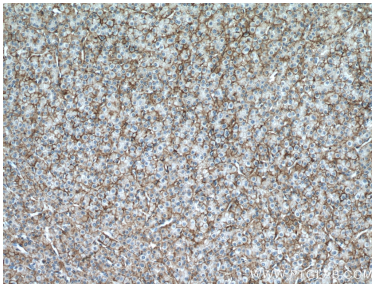
Various lysates were subjected to SDS PAGE followed by western blot with 55187-1-AP (ATP1A1-Specific antibody) at dilution of 1:4000 incubated at room temperature for 1.5 hours.



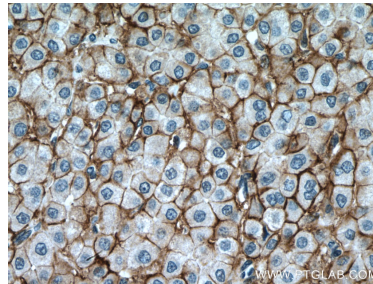
WB result of ATP1A1-Specific antibody (55187-1-AP; 1:30000; incubated at room temperature for 1.5 hours) with sh-Control and sh-ATP1A1-Specific transfected HEK-293 cells.



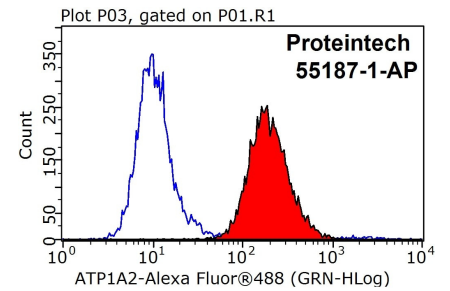
Immunofluorescent analysis of (4% PFA) fixed Caco-2 cells using 55187-1-AP (ATP1A1-Specific antibody) at dilution of 1:100 and CoraLite488-Conjugated AffiniPure Goat Anti-Rabbit IgG(H+L).



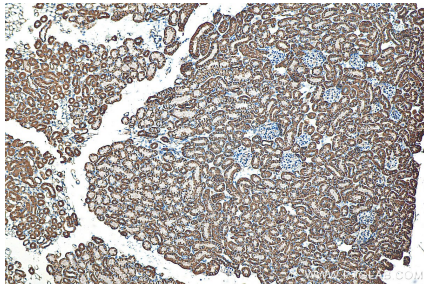
Immunohistochemical analysis of paraffin-embedded human liver cancer tissue slide using 55187-1-AP (ATP1A1-Specific antibody) at dilution of 1:200 (under 10x lens). Heat mediated antigen retrieval with Tris-EDTA buffer (pH 9.0).



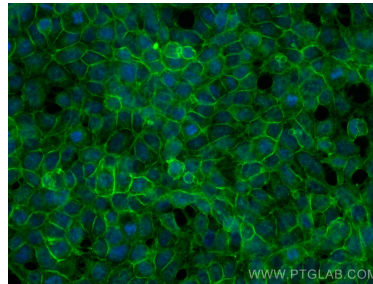
Immunohistochemical analysis of paraffin-embedded human liver cancer tissue slide using 55187-1-AP (ATP1A1-Specific antibody) at dilution of 1:200 (under 40x lens). Heat mediated antigen retrieval with Tris-EDTA buffer (pH 9.0).



1x10⁶ HEK-293 cells were stained with 0.2ug ATP1A1-Specific antibody (55187-1-AP, red) and control antibody (blue). Fixed with 90% MeOH blocked with 3% BSA (30 min). Alexa Fluor 488-conjugated AffiniPure Goat Anti-Rabbit IgG(H+L) with dilution 1:1000.



Immunohistochemical analysis of paraffin-embedded mouse kidney tissue slide using 55187-1-AP (ATP1A1-Specific antibody) at dilution of 1:400 (under 10x lens). Heat mediated antigen retrieval with Tris-EDTA buffer (pH 9.0).



Immunofluorescent analysis of (-20°C Methanol) fixed HEK-293 cells using ATP1A1-Specific antibody (55187-1-AP) at dilution of 1:1000 and CoraLite@488-Conjugated AffiniPure Goat Anti-Rabbit IgG(H+L).