

Nur für Forschungszwecke

CSNK1A1 Polyklonaler Antikörper

Katalog-Nr.:55192-1-AP

11 Publikationen



Allgemeine Informationen

Katalog-Nr.: 55192-1-AP	GenBank-Zugangsnummer: NM_001892	Reinigungsmethode: Antigen-Affinitätsreinigung
Größe: 150ul , Konzentration: 450 µg/ml von Nanodrop und 453 µg/ml durch die Bradford-Methode mit BSA als Standard;	GeneID (NCBI): 1452	Empfohlene Verdünnungen: WB 1:500-1:2000 IHC 1:50-1:500 IF 1:10-1:100
Wirt: Kaninchen	Vollständiger Name: casein kinase 1, alpha 1	
Isotyp: IgG	Berechnete Masse: 42 kDa	
	Beobachtete Masse: 42-45 kDa	

Anwendungen

Geprüfte Anwendungen: IF, IHC, WB, ELISA	Positivkontrollen: WB : MCF7 cells, HeLa-Zellen, NIH/3T3-Zellen
In Publikationen genannte Anwendungen: CoIP, IF, IHC, IP, WB	IHC : humanes Mammakarzinomgewebe, humanes Lungenkarzinomgewebe
Getestete Reaktivität: Human, Maus, Ratte	IF : A549-Zellen,
Zitierte Arten: Human, Maus	
Hinweis-IHC: Antigendemaskierung mit TE-Puffer pH 9,0 empfohlen. (*) Wahlweise kann die Antigendemaskierung auch mit Citratpuffer pH 6,0 erfolgen.	

Hintergrundinformationen

CSNK1A1, also named as CK1, belongs to the protein kinase superfamily, CK1 Ser/Thr protein kinase family and Casein kinase I subfamily. Casein kinases are operationally defined by their preferential utilization of acidic proteins such as caseins as substrates. CSNK1A1 can phosphorylate a large number of proteins. It participates in Wnt signaling. CSNK1A1 phosphorylates CTNNB1 at 'Ser-45'. May play a role in segregating chromosomes during mitosis. This antibody is specific to CSNK1A1.

Bemerkenswerte Veröffentlichungen

Verfasser	Pubmed ID	Journal	Anwendung
Xue Deng	34726688	J Cell Biol	WB
Xiaomin Liu	35550648	Stem Cell Res Ther	WB,IF
Yuyuan Zi	35280671	Int J Biol Sci	WB

Lagerung

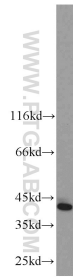
Lagerungsbedingungen:
Bei -20°C lagern.
Lagerungspuffer:
PBS mit 0.02% Natriumazid und 50% Glycerin pH 7.3.
Aliquotieren ist nicht notwendig bei -20°C Lagerung

*** 20ul-Größen enthalten 0.1% BSA

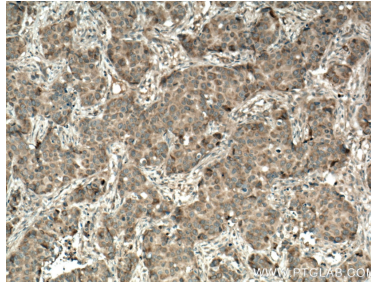
For technical support and original validation data for this product please contact:
T: 1 (888) 4PTGLAB (1-888-478-4522) (toll free in USA), or 1(312) 455-8498 (outside USA)
E: proteintech@ptglab.com
W: ptglab.com

This product is exclusively available under Proteintech Group brand and is not available to purchase from any other manufacturer.

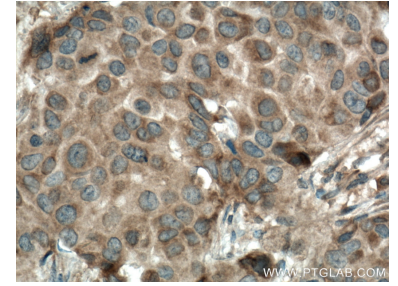
Ausgewählte Validierungsdaten



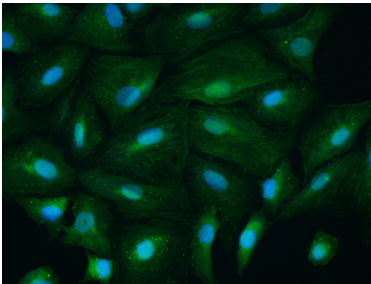
MCF7 cells were subjected to SDS PAGE followed by western blot with 55192-1-AP (CSNK1A1 antibody) at dilution of 1:1000 incubated at room temperature for 1.5 hours.



Immunohistochemical analysis of paraffin-embedded human breast cancer tissue slide using 55192-1-AP (CSNK1A1 antibody) at dilution of 1:200 (under 10x lens. Heat mediated antigen retrieval with Tris-EDTA buffer (pH 9.0).



Immunohistochemical analysis of paraffin-embedded human breast cancer tissue slide using 55192-1-AP (CSNK1A1 antibody) at dilution of 1:200 (under 40x lens. Heat mediated antigen retrieval with Tris-EDTA buffer (pH 9.0).



Immunofluorescent analysis of A549 cells using 55192-1-AP (CSNK1A1 antibody) at dilution of 1:25 and Alexa Fluor 488-conjugated AffiniPure Goat Anti-Rabbit IgG(H+L).