

Nur für Forschungszwecke

CaMKII beta-Specific Polyklonaler Antikörper

Katalog-Nr.:55218-1-AP



Allgemeine Informationen

Katalog-Nr.: 55218-1-AP	GenBank-Zugangsnummer: NM_001220	Reinigungsmethode: Antigen-Affinitätsreinigung
Größe: 150ul , Konzentration: 400 µg/ml von Nanodrop und 280 µg/ml durch die Bradford-Methode mit BSA als Standard;	GeneID (NCBI): 816	Empfohlene Verdünnungen: WB 1:1000-1:6000 IHC 1:20-1:200 IF 1:20-1:200
Wirt: Kaninchen	Vollständiger Name: calcium/calmodulin-dependent protein kinase II beta	
Isotyp: IgG	Berechnete Masse: 73 kDa	
	Beobachtete Masse: 55-60 kDa	

Anwendungen

Geprüfte Anwendungen:

IF, IHC, WB, ELISA

Getestete Reaktivität:

Human, Maus, Ratte

Hinweis-IHC: Antigenmaskierung mit TE-Puffer pH 9,0 empfohlen. (*) Wahlweise kann die Antigenmaskierung auch mit Citratpuffer pH 6,0 erfolgen.

Positivkontrollen:

WB : A549-Zellen, HeLa-Zellen, Maus-Cerebellum-Gewebe, Maushirngewebe

IHC : humanes Skelettmuskelgewebe, humanes Hirngewebe

IF : HEK-293-Zellen,

Hintergrundinformationen

CaMKII beta (Calcium/calmodulin-dependent protein kinase type II subunit beta), also named as CAMK2B, CAM2 or CAMKB, belongs to the protein kinase superfamily, CAMK Ser/Thr protein kinase family and CaMK subfamily. It is a member of the NMDAR signaling complex in excitatory synapses, it may regulate NMDAR-dependent potentiation of the AMPAR and synaptic plasticity. It plays a distinct role in the induction of anergy in T lymphocytes, by differential regulation of IL10 and IL2 gene transcription suggesting MEF2A as a molecular target which can integrate different calcium signals (PMID:22578382). CAMK2B has 8 isoforms produced by alternative splicing with the molecular weight 50-73 kDa. This antibody is specific to CAMK2B and can recognize all the isoforms except isoform 7.

Lagerung

Lagerungsbedingungen:

Bei -20°C lagern.

Lagerungspuffer:

PBS mit 0.02% Natriumazid und 50% Glycerin pH 7.3.

Aliquotieren ist nicht notwendig bei -20°C Lagerung

***** 20ul-Größen enthalten 0.1% BSA**

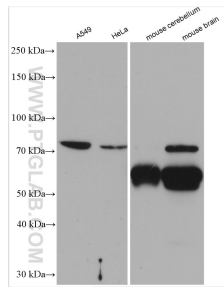
For technical support and original validation data for this product please contact:

T: 1 (888) 4PTGLAB (1-888-478-4522) (toll free in USA), or 1(312) 455-8498 (outside USA)

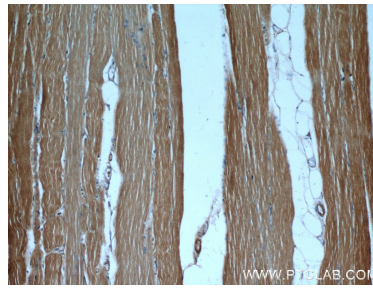
E: proteintech@ptglab.com
W: ptglab.com

This product is exclusively available under Proteintech Group brand and is not available to purchase from any other manufacturer.

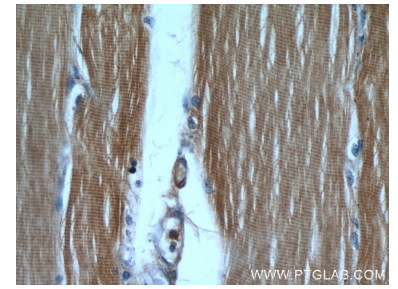
Ausgewählte Validierungsdaten



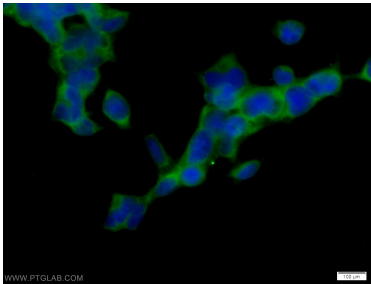
Various lysates were subjected to SDS PAGE followed by western blot with 55218-1-AP (CaMKII beta-Specific antibody) at dilution of 1:3000 incubated at room temperature for 1.5 hours.



Immunohistochemical analysis of paraffin-embedded human skeletal muscle using 55218-1-AP (CaMKII beta antibody) at dilution of 1:50 (under 10x lens).



Immunohistochemical analysis of paraffin-embedded human skeletal muscle using 55218-1-AP (CaMKII beta antibody) at dilution of 1:50 (under 40x lens).



Immunofluorescent analysis of HEK-293 cells using 55218-1-AP (CaMKII beta antibody) at dilution of 1:50 and Alexa Fluor 488-conjugated AffiniPure Goat Anti-Rabbit IgG(H+L).