

Nur für Forschungszwecke

# NSE/ENO2-specific Polyklonaler Antikörper



Katalog-Nr.: 55235-1-AP

Vorgestelltes Produkt

1 Publikationen

## Allgemeine Informationen

<b>Katalog-Nr.:</b> 55235-1-AP	<b>GenBank-Zugangsnummer:</b> NM_001975	<b>Reinigungsmethode:</b> Antigen-Affinitätsreinigung
<b>Größe:</b> 150ul, Konzentration: 133 µg/ml durch die Bradford-Methode mit BSA als Standard;	<b>GeneID (NCBI):</b> 2026	<b>Empfohlene Verdünnungen:</b> WB 1:1000-1:4000 IHC 1:20-1:200
<b>Wirt:</b> Kaninchen	<b>Vollständiger Name:</b> enolase 2 (gamma, neuronal)	
<b>Isotyp:</b> IgG	<b>Berechnete Masse:</b> 47 kDa	
	<b>Beobachtete Masse:</b> 47 kDa	

## Anwendungen

<b>Geprüfte Anwendungen:</b> IHC, WB, ELISA	<b>Positivkontrollen:</b> WB: SH-SY5Y-Zellen, HEK-293-Zellen, HepG2-Zellen, Maushirngewebe, U-251-Zellen
<b>In Publikationen genannte Anwendungen:</b> WB	<b>IHC:</b> humanes Hirngewebe, humanes Magenkrebsgewebe
<b>Getestete Reaktivität:</b> Human, Maus, Ratte	
<b>Zitierte Arten:</b> Maus	
<b>Hinweis-IHC: Antigenmaskierung mit TE-Puffer pH 9,0 empfohlen. (*) Wahlweise kann die Antigenmaskierung auch mit Citratpuffer pH 6,0 erfolgen.</b>	

## Hintergrundinformationen

NSE, also named as ENO2, belongs to the enolase family. Enolases are cytoplasmic glycolytic enzymes that may be involved in differentiation. The enolase has three isoenzymes, alpha, beta and gamma. The alpha form is expressed in most tissues, whereas the beta form is expressed in muscle tissue. The gamma enolase (ENO2), a homodimer, is primarily localized in neurons and neuroendocrine cells and is a cancer diagnostic marker for brain tumors (PMID:7520111). ENO2 plays a role in the glycolysis-related energy pathway and might be involved in higher metabolic activity during the day than at night, at least in part. This antibody is specific to ENO2 and has no cross reaction to ENO1 and ENO3.

## Bemerkenswerte Veröffentlichungen

Verfasser	Pubmed ID	Journal	Anwendung
Chunli Xu	31257504	Mol Med Rep	WB

## Lagerung

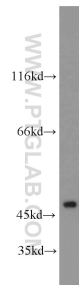
**Lagerungsbedingungen:**  
Bei -20°C lagern.  
**Lagerungspuffer:**  
PBS mit 0.02% Natriumazid und 50% Glycerin pH 7.3.  
Aliquotieren ist nicht notwendig bei -20°C Lagerung

\*\*\* 20ul-Größen enthalten 0.1% BSA

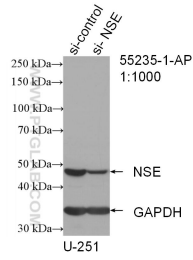
For technical support and original validation data for this product please contact:  
T: 1 (888) 4PTGLAB (1-888-478-4522) (toll free in USA), or 1(312) 455-8498 (outside USA)  
E: proteintech@ptglab.com  
W: ptglab.com

This product is exclusively available under Proteintech Group brand and is not available to purchase from any other manufacturer.

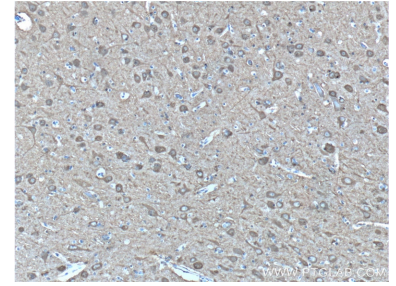
## Ausgewählte Validierungsdaten



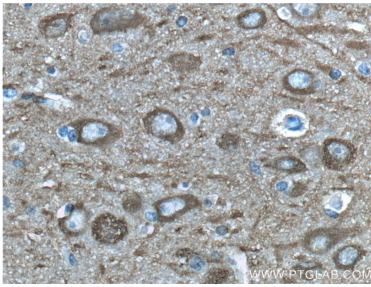
SH-SY5Y cells were subjected to SDS PAGE followed by western blot with 55235-1-AP (NSE/ENO2-specific antibody) at dilution of 1:2000 incubated at room temperature for 1.5 hours.



WB result of NSE/ENO2-specific antibody (55235-1-AP; 1:1000; incubated at room temperature for 1.5 hours) with sh-Control and sh-NSE/ENO2-specific transfected U-251 cells.



Immunohistochemical analysis of paraffin-embedded human brain tissue slide using 55235-1-AP (NSE/ENO2-specific antibody at dilution of 1:200 (under 10x lens).



Immunohistochemical analysis of paraffin-embedded human brain tissue slide using 55235-1-AP (NSE/ENO2-specific antibody at dilution of 1:200 (under 40x lens).