

Allgemeine Informationen

Katalog-Nr.:

55237-1-AP

Größe:

150ul , Konzentration: 850 µg/ml von 2023
 Nanodrop und 293 µg/ml durch die
 Bradford-Methode mit BSA als
 Standard;

Wirt:

Kaninchen

Isotyp:

IgG

GenBank-Zugangsnummer:

NM_001428

GeneID (NCBI):

2023

Vollständiger Name:

enolase 1, (alpha)

Berechnete Masse:

47 kDa

Beobachtete Masse:

47 kDa

Reinigungsmethode:

Antigen-Affinitätsreinigung

Empfohlene Verdünnungen:

WB 1:1000-1:4000

IP 0.5-4.0 ug für IP und 1:500-1:1000
für WB

IHC 1:20-1:200

IF 1:20-1:200

Anwendungen

Geprüfte Anwendungen:

IF, IHC, IP, WB, ELISA

In Publikationen genannte Anwendungen:

IP, WB

Getestete Reaktivität:

Human, Maus, Ratte

Zitierte Arten:

Human

Hinweis-IHC: Antigendemaskierung mit TE-Puffer pH 9,0 empfohlen. (*) Wahlweise kann die Antigendemaskierung auch mit Citratpuffer pH 6,0 erfolgen.

Positivkontrollen:

WB : HeLa-Zellen, HepG2-Zellen, Maushirngewebe, Mauslebergewebe

IP : Maushirngewebe,

IHC : humanes Hirngewebe, humanes Pankreasgewebe, humanes Skelettmuskelgewebe

IF : HepG2-Zellen,

Hintergrundinformationen

ENO1, also named as NNE, ENO1L1, MBPB1, MPB1 and MBP1, belongs to the enolase family. ENO1 is a metabolic enzyme involved in the synthesis of pyruvate. It also acts as a plasminogen receptor and mediates the activation of plasmin and extracellular matrix degradation. In tumor cells, ENO1 is up-regulated and supports the Warburg effect; it is expressed at the cell surface, where it promotes cancer invasion, and is subjected to a specific array of post-translational modifications, namely acetylation, methylation and phosphorylation. ENO1 overexpression and post-translational modifications could be of diagnostic and prognostic value in many cancer types. (PMID: 27814656). This antibody is specific to ENO1 and has no cross reaction with ENO2 and ENO3.

Bemerkenswerte Veröffentlichungen

Verfasser	Pubmed ID	Journal	Anwendung
Guang Yang	33372411	EMBO Rep	WB,IP

Lagerung

Lagerungsbedingungen:

Bei -20°C lagern. Nach dem Versand ein Jahr lang stabil

Lagerungspuffer:

PBS mit 0.02% Natriumazid und 50% Glycerin pH 7.3.

Aliquotieren ist nicht notwendig bei -20°C Lagerung

*** 20ul-Größen enthalten 0.1% BSA

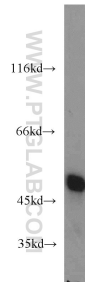
For technical support and original validation data for this product please contact:

T: 1 (888) 4PTGLAB (1-888-478-4522) (toll free in USA), or 1(312) 455-8498 (outside USA)

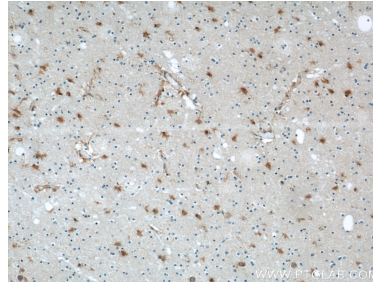
E: proteintech@ptglab.com
 W: ptglab.com

This product is exclusively available under Proteintech Group brand and is not available to purchase from any other manufacturer.

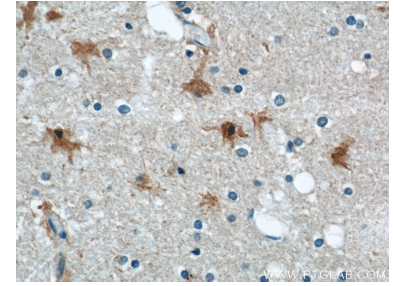
Ausgewählte Validierungsdaten



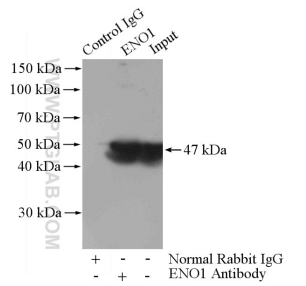
HeLa cells were subjected to SDS PAGE followed by western blot with 55237-1-AP (ENO1 antibody) at dilution of 1:2000 incubated at room temperature for 1.5 hours.



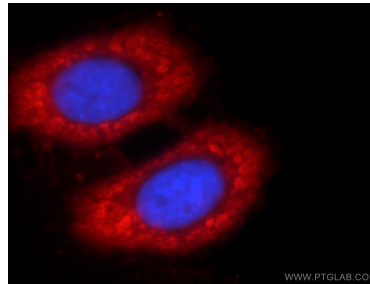
Immunohistochemical analysis of paraffin-embedded human brain using 55237-1-AP (ENO1 antibody) at dilution of 1:100 (under 10x lens).



Immunohistochemical analysis of paraffin-embedded human brain using 55237-1-AP (ENO1 antibody) at dilution of 1:100 (under 40x lens).



IP Result of anti-ENO1 (IP:55237-1-AP, 4ug; Detection:55237-1-AP 1:500) with mouse brain tissue lysate 4000ug.



Immunofluorescent analysis of HepG2 cells using 55237-1-AP (ENO1 antibody) at dilution of 1:50 and Rhodamine-Goat anti-Rabbit IgG.