

Nur für Forschungszwecke

# Caspase 12 Polyklonaler Antikörper



Katalog-Nr.:55238-1-AP

Vorgestelltes Produkt

82 Publikationen

## Allgemeine Informationen

Katalog-Nr.:

55238-1-AP

Größe:

150ul, Konzentration: 550 µg/ml von Nanodrop und 400 µg/ml durch die Bradford-Methode mit BSA als Standard;

Wirt:

Kaninchen

Isotyp:

IgG

GenBank-Zugangsnummer:

NR\_000035

GeneID (NCBI):

120329

Vollständiger Name:

caspase 12 (gene/pseudogene)

Berechnete Masse:

39 kDa

Beobachtete Masse:

36-42 kDa, 50 kDa

Reinigungsmethode:

Antigen-Affinitätsreinigung

Empfohlene Verdünnungen:

WB 1:500-1:2000

IP 0.5-4.0 µg für IP und 1:500-1:2000

für WB

IHC 1:50-1:500

IF 1:50-1:500

## Anwendungen

Geprüfte Anwendungen:

IF, IHC, IP, WB, ELISA

In Publikationen genannte Anwendungen:

IF, IHC, WB

Getestete Reaktivität:

Human

Zitierte Arten:

Hamster, Hausschwein, Human

**Hinweis-IHC: Antigendemaskierung mit TE-Puffer pH 9,0 empfohlen. (\*) Wahlweise kann die Antigendemaskierung auch mit Citratpuffer pH 6,0 erfolgen.**

Positivkontrollen:

WB: HEK-293-Zellen, Multizellen

IP: HEK-293-Zellen,

IHC: humanes Prostatahyperplasie-Gewebe, humanes Herzgewebe

IF: HeLa-Zellen,

## Hintergrundinformationen

Caspase 12 is an enzyme known as a cysteine protease. It belongs to a family of enzymes called caspases that cleave their substrates at C-terminal aspartic acid residues. It is most highly related to members of the ICE subfamily of caspases that process inflammatory cytokines. Caspase-12 is located in the endoplasmic reticulum (ER). It is responsible for ER-stress-induced apoptosis, such as high calcium concentration, low oxygen and low glucose levels. Caspase-12 Antibody detects endogenous levels of full-length caspase-12 protein (50 kDa) and its cleaved product (40-44 kDa). This antibody does not cross-react with other caspases.

## Bemerkenswerte Veröffentlichungen

| Verfasser   | Pubmed ID | Journal     | Anwendung |
|-------------|-----------|-------------|-----------|
| Xiaowei Niu | 30232231  | Biosci Rep  | WB        |
| Yu Wang     | 32897804  | Pharm Biol  | WB        |
| Meng Wang   | 33014875  | Front Oncol | WB        |

## Lagerung

Lagerungsbedingungen:

Bei -20°C lagern. Nach dem Versand ein Jahr lang stabil

Lagerungspuffer:

PBS mit 0.02% Natriumazid und 50% Glycerin pH 7.3.

Aliquotieren ist nicht notwendig bei -20°C Lagerung

\*\*\* 20ul-Größen enthalten 0.1% BSA

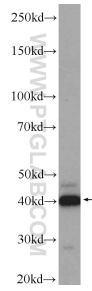
For technical support and original validation data for this product please contact:

T: 1 (888) 4PTGLAB (1-888-478-4522) (toll free in USA), or 1(312) 455-8498 (outside USA)

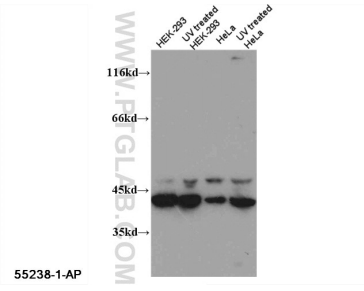
E: proteintech@ptglab.com  
W: ptglab.com

This product is exclusively available under Proteintech Group brand and is not available to purchase from any other manufacturer.

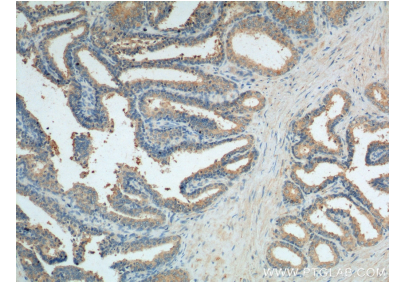
## Ausgewählte Validierungsdaten



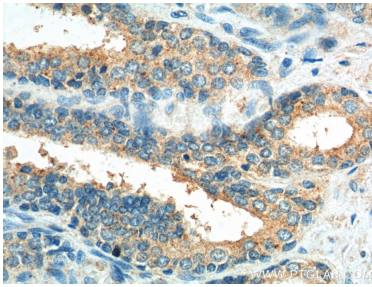
HEK-293 cells were subjected to SDS PAGE followed by western blot with 55238-1-AP (CASP12 antibody) at dilution of 1:1000 incubated at room temperature for 1.5 hours.



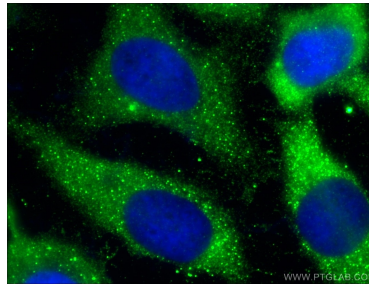
WB result of 55238-1-AP (CASP12 antibody) with various lysates.



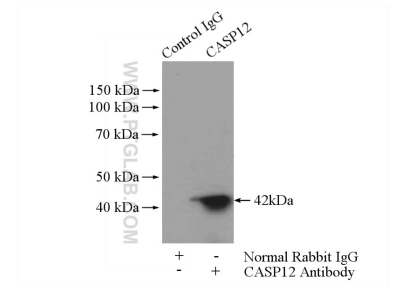
Immunohistochemical analysis of paraffin-embedded human prostate hyperplasia tissue slide using 55238-1-AP (Caspase 12 Antibody) at dilution of 1:200 (under 10x lens).



Immunohistochemical analysis of paraffin-embedded human prostate hyperplasia tissue slide using 55238-1-AP (Caspase 12 Antibody) at dilution of 1:200 (under 40x lens).



Immunofluorescent analysis of (10% Formaldehyde) fixed HeLa cells using 55238-1-AP (Caspase 12 antibody) at dilution of 1:50 and Alexa Fluor 488-conjugated AffiniPure Goat Anti-Rabbit IgG(H+L).



IP Result of anti-Caspase 12 (IP:55238-1-AP, 4ug; Detection:55238-1-AP 1:1000) with HEK-293 cells lysate 2000ug.